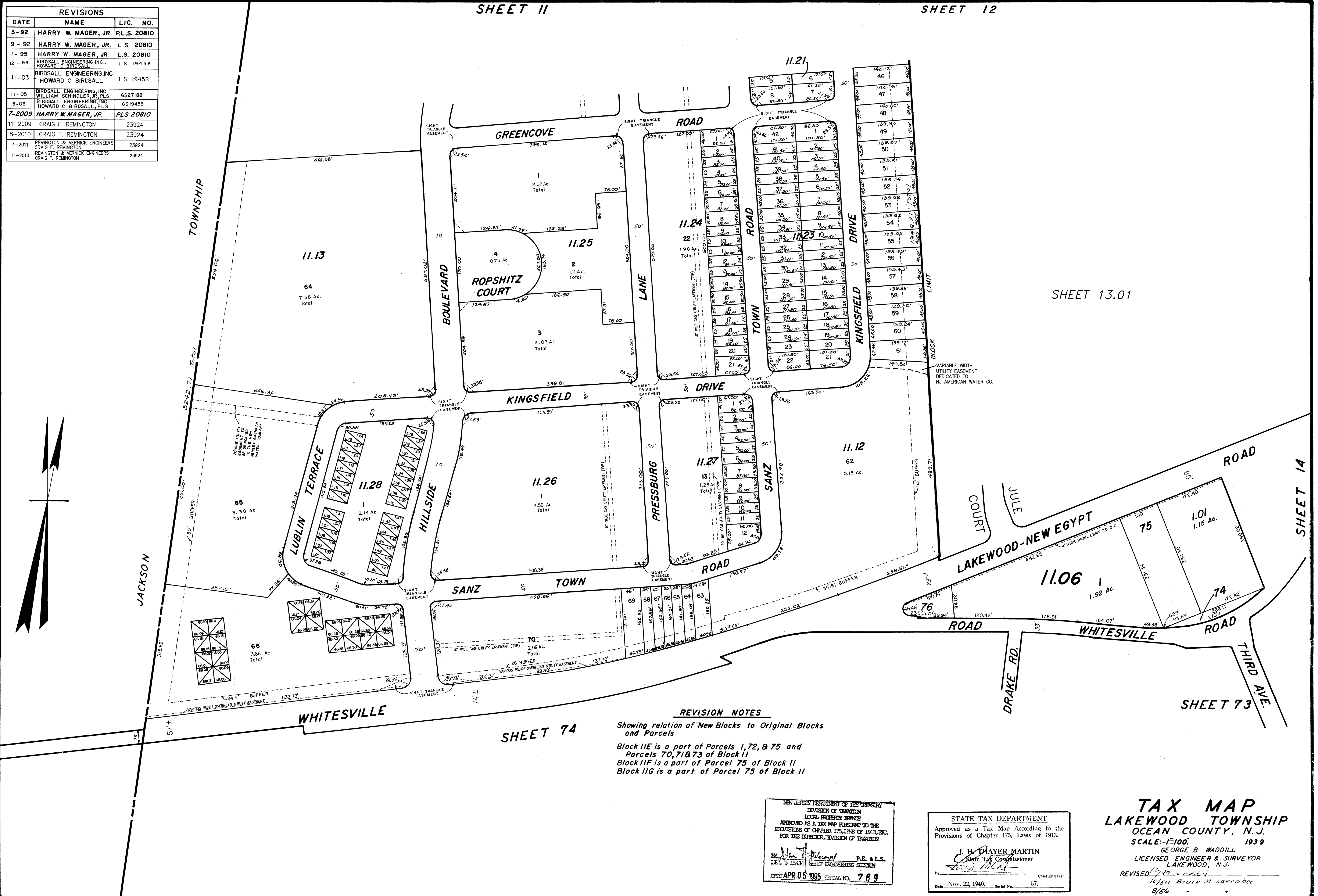


REVISIONS		
DATE	NAME	LIC. NO.
3-92	HARRY W. MAGER, JR.	P.L.S. 20810
9-92	HARRY W. MAGER, JR.	L.S. 20810
1-95	HARRY W. MAGER, JR.	L.S. 20810
12-99	BIRDSALL ENGINEERING INC. HOWARD C. BIRDSALL	L.S. 19458
11-03	BIRDSALL ENGINEERING INC. HOWARD C. BIRDSALL	L.S. 19458
11-05	BIRDSALL ENGINEERING INC. WILLIAM SCHINDLER JR. PLS	GS27188
3-06	BIRDSALL ENGINEERING INC. HOWARD C. BIRDSALL, PLS	GS19458
7-2009	HARRY W. MAGER, JR.	PLS 20810
11-2009	CRAIG F. REMINGTON	23924
8-2010	CRAIG F. REMINGTON	23924
4-2011	REMINGTON & VERNICK ENGINEERS CRAIG F. REMINGTON	23924
11-2013	REMINGTON & VERNICK ENGINEERS CRAIG F. REMINGTON	23924

SHEET 11

SHEET 12



SHEET 13.01

SHEET 74

SHEET 73

SHEET 14

**REVISION NOTES**  
Showing relation of New Blocks to Original Blocks and Parcels  
Block 11E is a part of Parcels 1, 72, & 75 and  
Parcels 70, 71 & 73 of Block 11  
Block 11F is a part of Parcel 75 of Block 11  
Block 11G is a part of Parcel 75 of Block 11

NEW JERSEY DEPARTMENT OF THE TREASURY  
DIVISION OF TAXATION  
LOCAL REVENUE BRANCH  
APPROVED AS A TAX MAP RELATIVE TO THE  
REVISIONS OF CHAPTER 175, LAWS OF 1913, ETC.  
FOR THE DIRECTOR, DIVISION OF TAXATION  
BY: *[Signature]* P.E. & L.S.  
DATE: APR 05 1995 SERIAL NO. 769

STATE TAX DEPARTMENT  
Approved as a Tax Map According to the  
Provisions of Chapter 175, Laws of 1913.  
J. H. THAYER MARTIN  
State Tax Commissioner  
By: *[Signature]* Chief Engineer  
Date: Nov. 22, 1940. Serial No. 87.

**TAX MAP**  
**LAKEWOOD TOWNSHIP**  
OCEAN COUNTY, N.J.  
SCALE: 1"=100'  
1939  
GEORGE B. WADDILL  
LICENSED ENGINEER & SURVEYOR  
LAKEWOOD, N.J.  
REVISED 10/24/85 BY: Bruce M. Larrabee  
8/86  
12/85