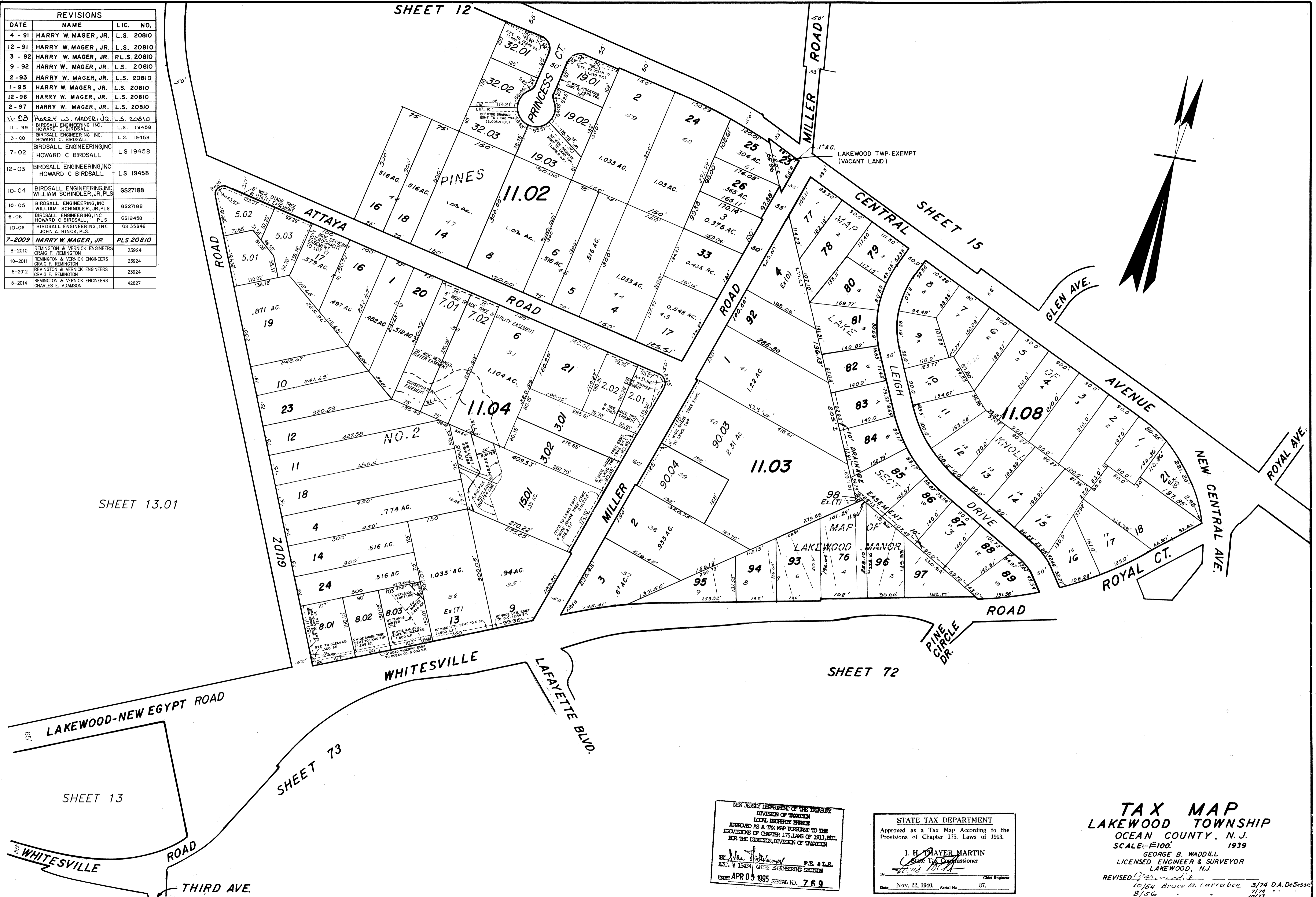


REVISIONS		
DATE	NAME	LIC. NO.
4-91	HARRY W. MAGER, JR.	L.S. 20810
12-91	HARRY W. MAGER, JR.	L.S. 20810
3-92	HARRY W. MAGER, JR.	P.L.S. 20810
9-92	HARRY W. MAGER, JR.	L.S. 20810
2-93	HARRY W. MAGER, JR.	L.S. 20810
1-95	HARRY W. MAGER, JR.	L.S. 20810
12-96	HARRY W. MAGER, JR.	L.S. 20810
2-97	HARRY W. MAGER, JR.	L.S. 20810
11-98	HARRY W. MAGER, JR.	L.S. 20810
11-99	BIRDSALL ENGINEERING INC. HOWARD C. BIRDSALL	L.S. 19458
3-00	BIRDSALL ENGINEERING INC. HOWARD C. BIRDSALL	L.S. 19458
7-02	BIRDSALL ENGINEERING INC. HOWARD C. BIRDSALL	L.S. 19458
12-03	BIRDSALL ENGINEERING INC. HOWARD C. BIRDSALL	L.S. 19458
10-04	BIRDSALL ENGINEERING INC. WILLIAM SCHINDLER, JR., PLS	GS27188
10-05	BIRDSALL ENGINEERING INC. WILLIAM SCHINDLER, JR., PLS	GS27188
6-06	BIRDSALL ENGINEERING INC. HOWARD C. BIRDSALL, PLS	GS19458
10-08	BIRDSALL ENGINEERING INC. JOHN A. HINCK, PLS	GS 35846
7-2009	HARRY W. MAGER, JR.	PLS 20810
8-2010	REMINGTON & VERNICK ENGINEERS CRAIG F. REMINGTON	23924
10-2011	REMINGTON & VERNICK ENGINEERS CRAIG F. REMINGTON	23924
8-2012	REMINGTON & VERNICK ENGINEERS CRAIG F. REMINGTON	23924
5-2014	REMINGTON & VERNICK ENGINEERS CHARLES E. ADAMSON	42627



NEW JERSEY DEPARTMENT OF THE TREASURY  
DIVISION OF TAXATION  
LOCAL PROPERTY TAX  
APPROVED AS A TAX MAP PURSUANT TO THE  
REVISIONS OF CHAPTER 175, LAWS OF 1913, ETC.  
FOR THE DIRECTOR, DIVISION OF TAXATION  
BY *[Signature]* P.E. & L.S.  
EX. 15434 CHIEF ENGINEERING SECTION  
DATE APR 05 1995 SERIAL NO. 769

STATE TAX DEPARTMENT  
Approved as a Tax Map According to the  
Provisions of Chapter 175, Laws of 1913.  
J. H. MAYER MARTIN  
State Tax Commissioner  
By *[Signature]* Chief Engineer  
Date Nov. 22, 1940. Serial No. 87.

**TAX MAP**  
**LAKWOOD TOWNSHIP**  
**OCEAN COUNTY, N.J.**  
**SCALE: 1"=100' 1939**  
GEORGE B. WADDILL  
LICENSED ENGINEER & SURVEYOR  
LAKEWOOD, N.J.  
REVISED 12/90 by *[Signature]*  
10/54 Bruce M. Larrabee 3/74 D.A. DeSessa  
8/56 " " 7/74 " " 10/77 " " 11/81 " " 12/89 " " 10/64 Robert B. Powers  
12/87 " " 5/77 F.D. Havens  
12/88 " " 12/88 " "

4-1-84 Rev for Revaluation - Daniel A. DeSessa P.E. L.S.  
12-84 Update  
8-88 Update - HARRY W. MAGER, JR. L.S.  
12-88 Update - HARRY W. MAGER, JR. L.S. 20810