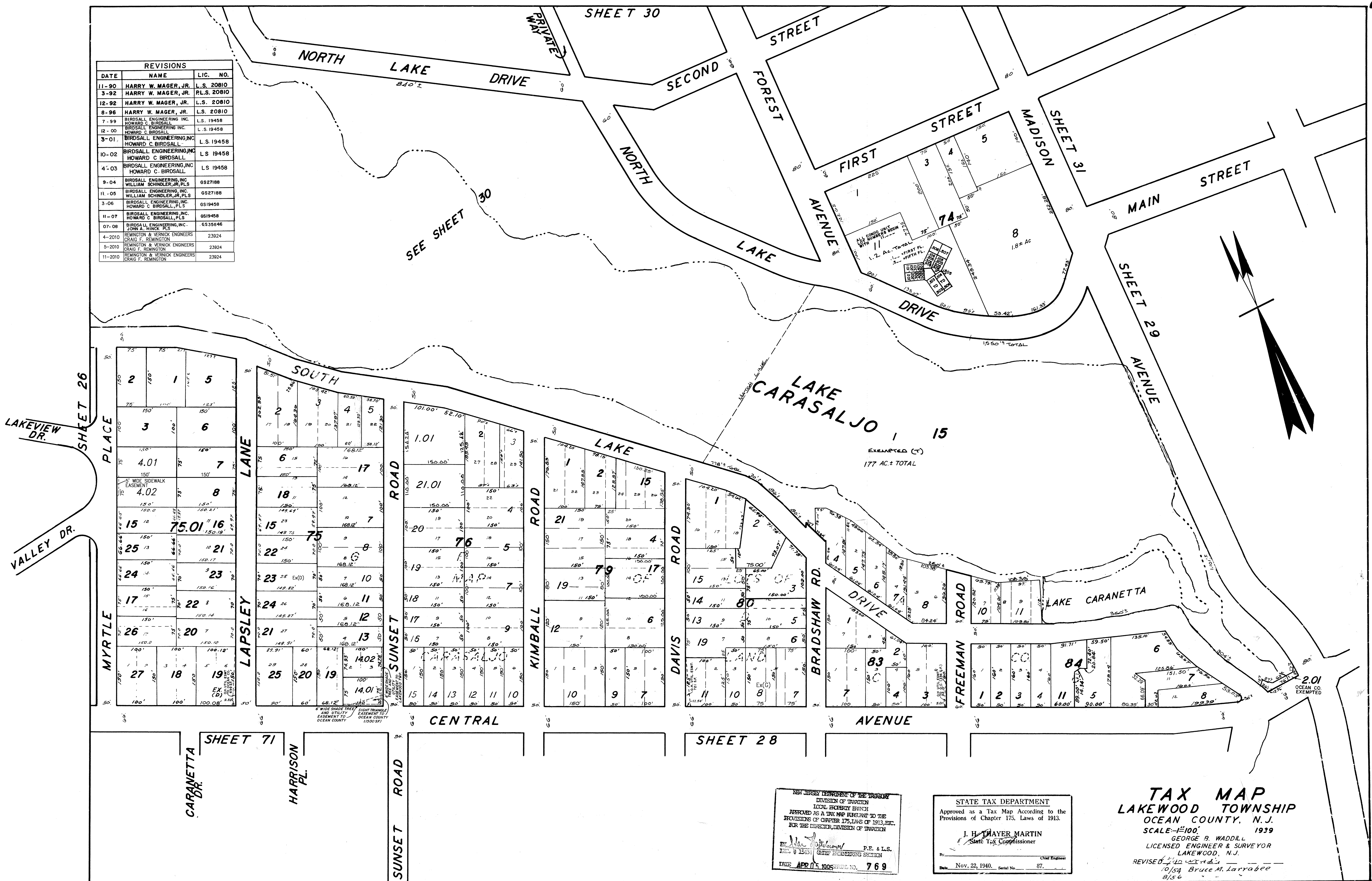


REVISIONS		
DATE	NAME	LIC. NO.
11-90	HARRY W. MAGER, JR.	L.S. 20810
3-92	HARRY W. MAGER, JR.	P.L.S. 20810
12-92	HARRY W. MAGER, JR.	L.S. 20810
8-96	HARRY W. MAGER, JR.	L.S. 20810
7-99	BIRDSALL ENGINEERING, INC.	L.S. 19458
12-00	BIRDSALL ENGINEERING, INC.	L.S. 19458
3-01	BIRDSALL ENGINEERING, INC.	L.S. 19458
10-02	BIRDSALL ENGINEERING, INC.	L.S. 19458
4-03	BIRDSALL ENGINEERING, INC.	L.S. 19458
9-04	BIRDSALL ENGINEERING, INC.	6527188
11-05	BIRDSALL ENGINEERING, INC.	6527188
3-06	BIRDSALL ENGINEERING, INC.	6519458
11-07	BIRDSALL ENGINEERING, INC.	6519458
07-08	BIRDSALL ENGINEERING, INC.	6535846
4-2010	REMINGTON & VERNICK ENGINEERS	23924
5-2010	REMINGTON & VERNICK ENGINEERS	23924
11-2010	REMINGTON & VERNICK ENGINEERS	23924



NEW JERSEY DEPARTMENT OF THE TREASURY  
DIVISION OF TAXATION  
LOCAL HOUSING UNIT  
APPROVED AS A TAX MAP ACCORDING TO THE  
PROVISIONS OF CHAPTER 175, LAWS OF 1913, ETC.  
FOR THE DIRECTOR, DIVISION OF TAXATION  
DATE APR 07 1905 SERIAL NO. 769

STATE TAX DEPARTMENT  
Approved as a Tax Map According to the  
Provisions of Chapter 175, Laws of 1913.  
J. H. TRAYER MARTIN  
State Tax Commissioner  
Date Nov. 22, 1940. Serial No. 87.

**TAX MAP**  
**LAKEWOOD TOWNSHIP**  
**OCEAN COUNTY, N.J.**  
SCALE = 1" = 100' 1939  
GEORGE B. WADDILL  
LICENSED ENGINEER & SURVEYOR  
LAKEWOOD, N.J.  
REVISED 10/14/14 Bruce M. Larrabee 8/15/6

4-1-84 Rev. for Revaluation - Daniel A. DeSessa RE - L.S.  
5-85 Update  
8-88 Update - HARRY W. MAGER, JR. - L.S.  
6-88 Rev. for Revaluation - HARRY W. MAGER, JR. - L.S.  
6/73 Daniel A. DeSessa 7/74  
10/64 ROBERT B. POWERS  
11/69 STANLEY B. PETERS