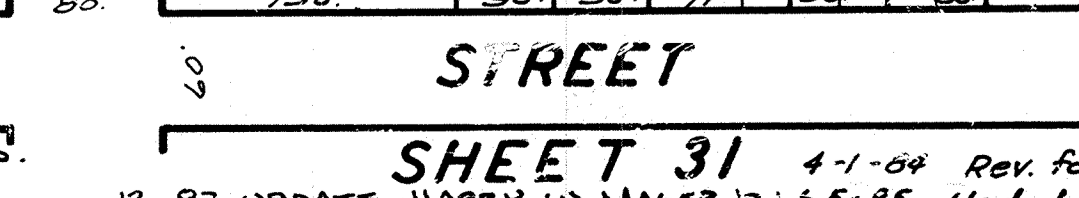
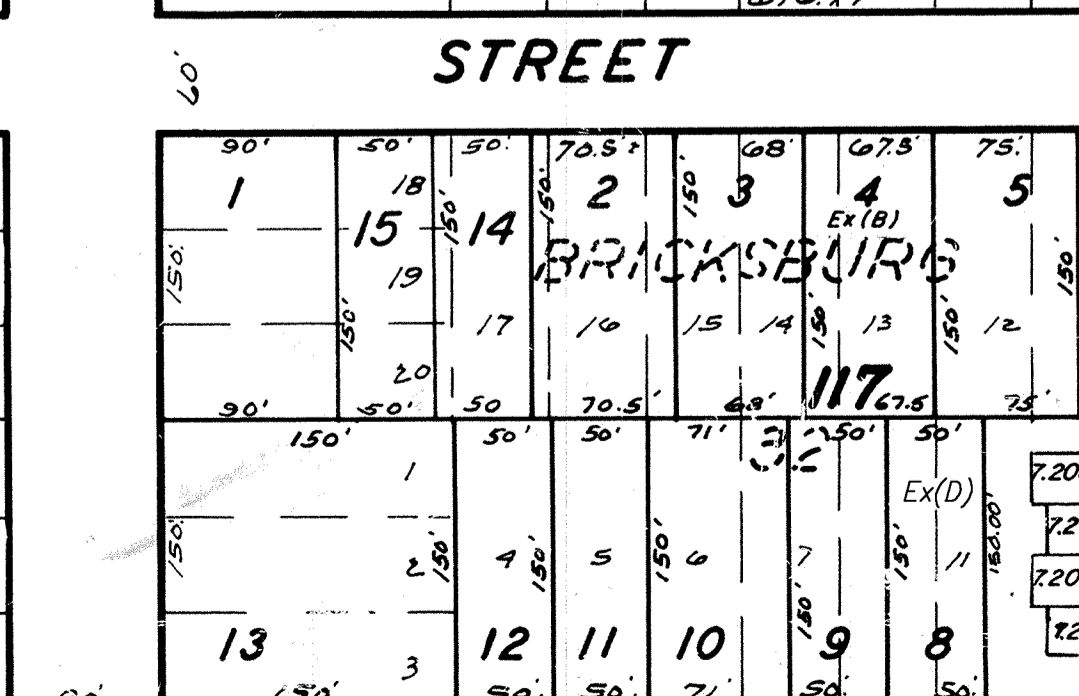
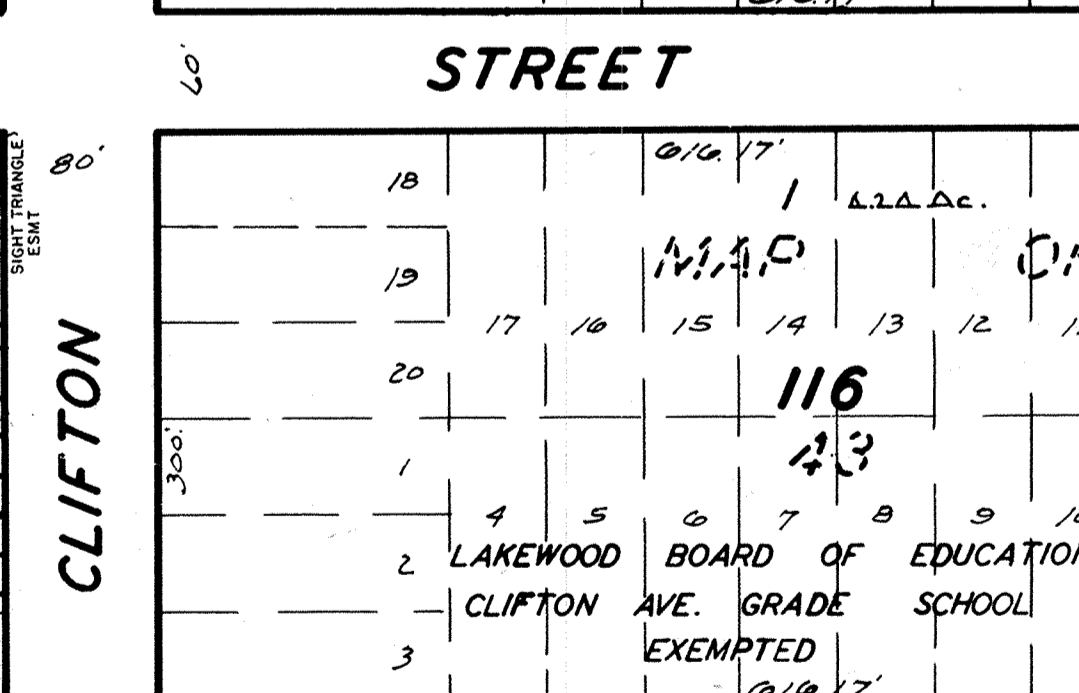
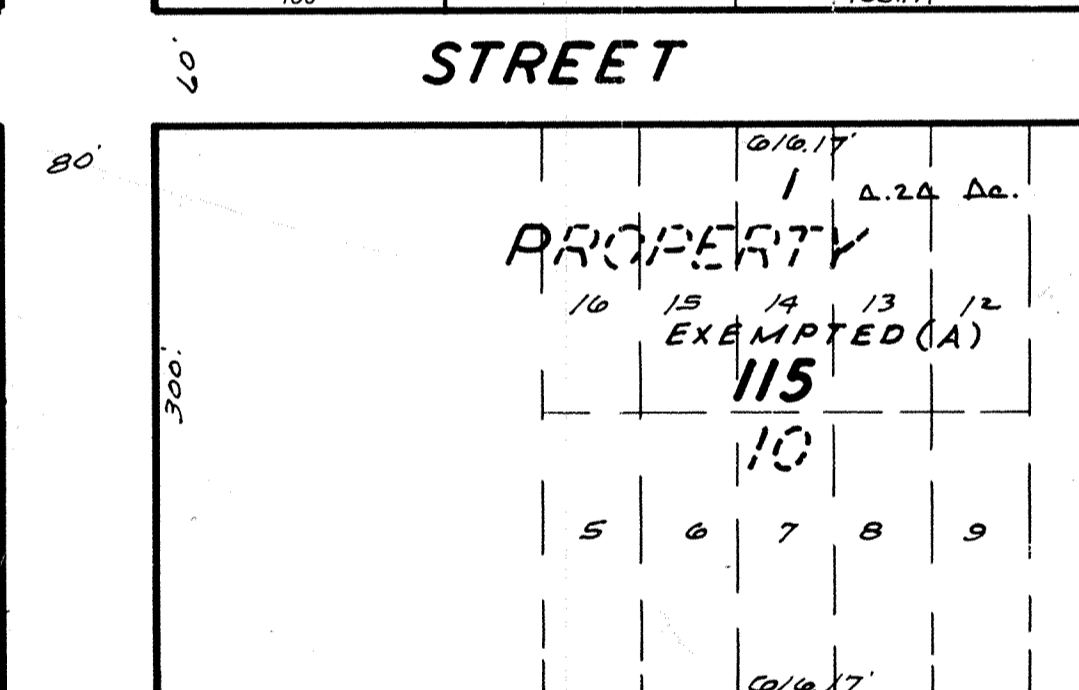
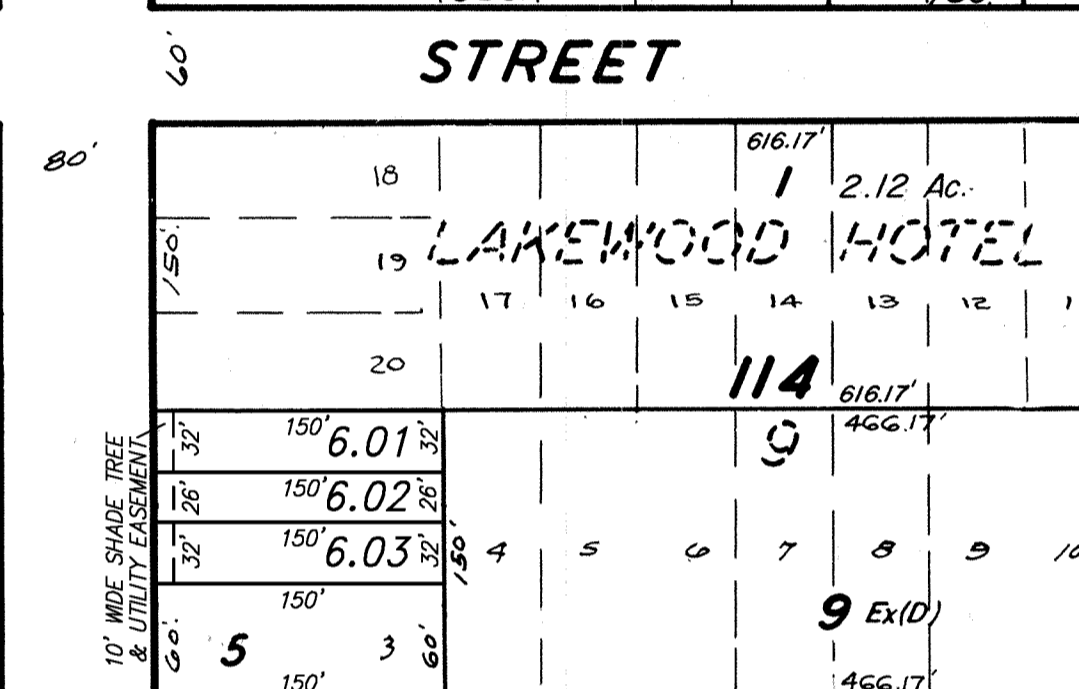
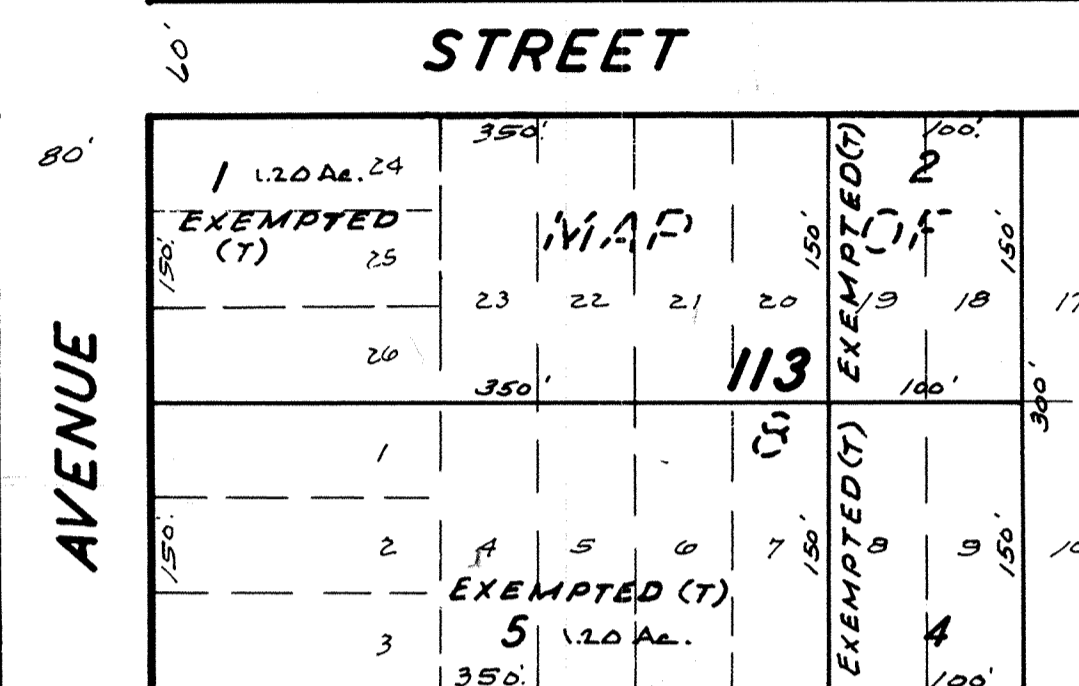
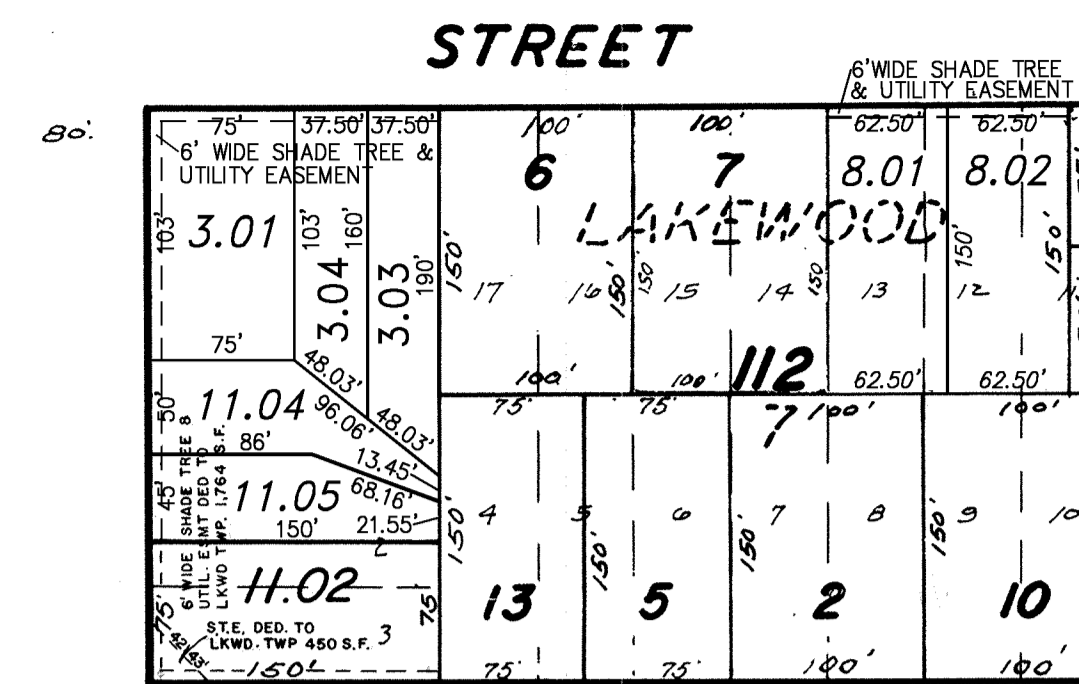
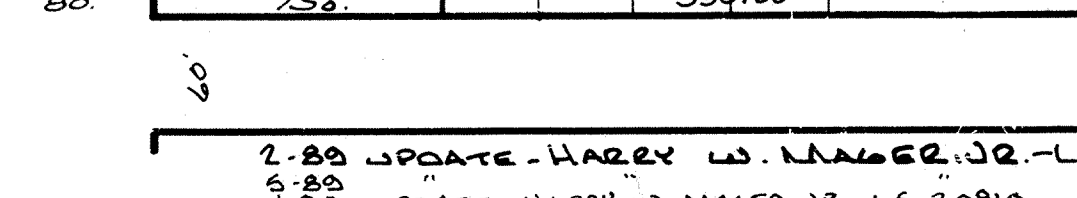
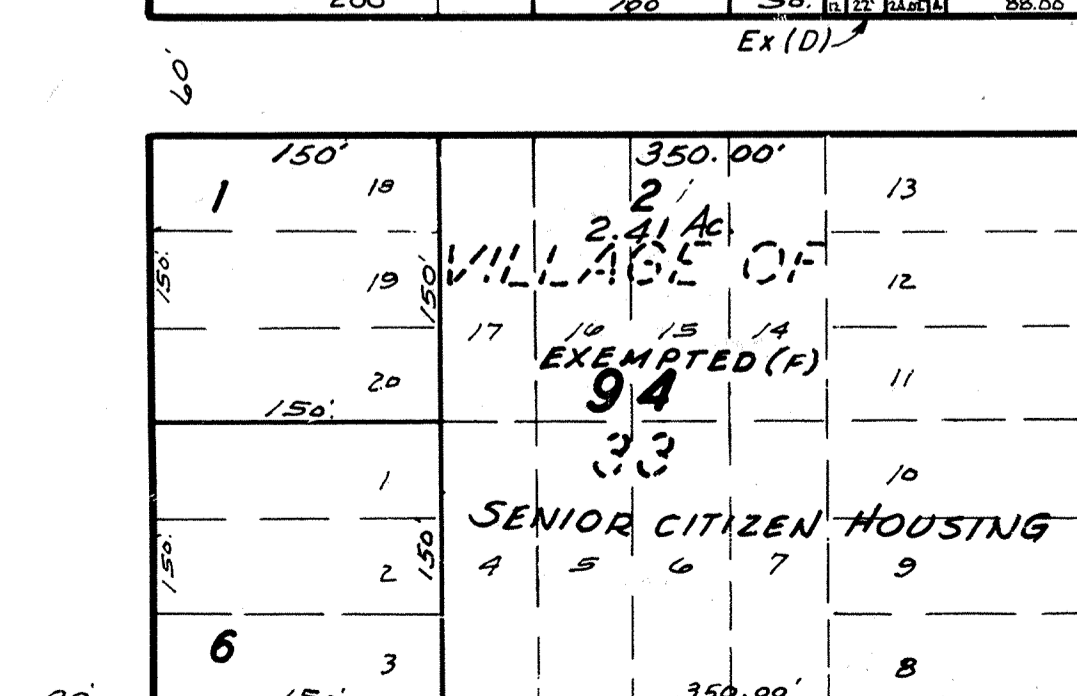
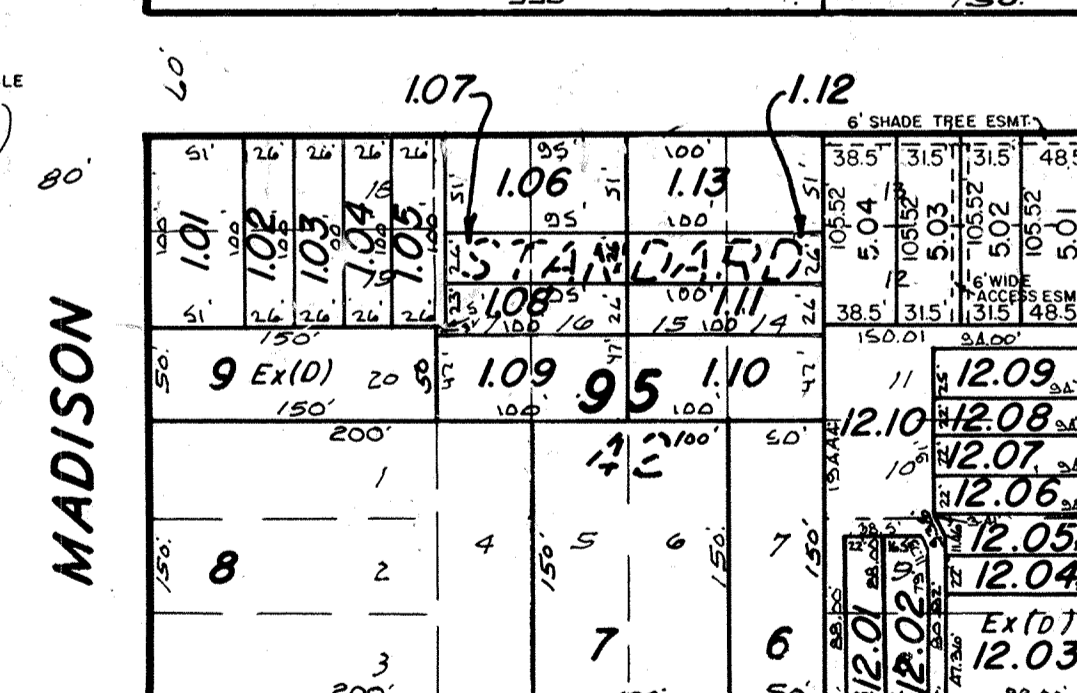
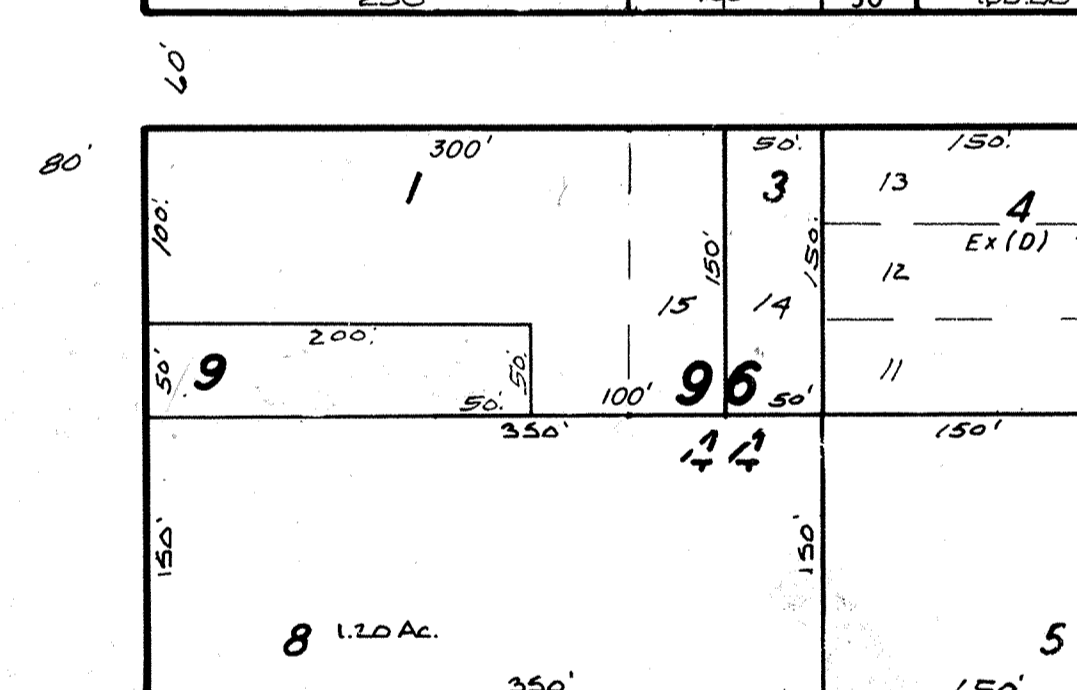
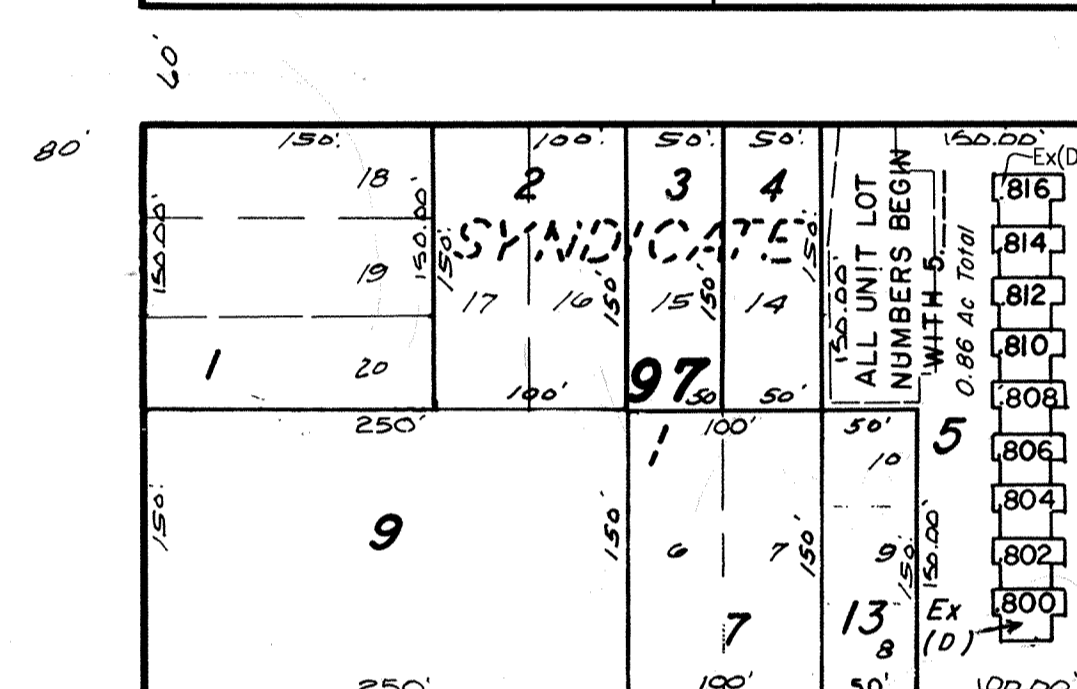
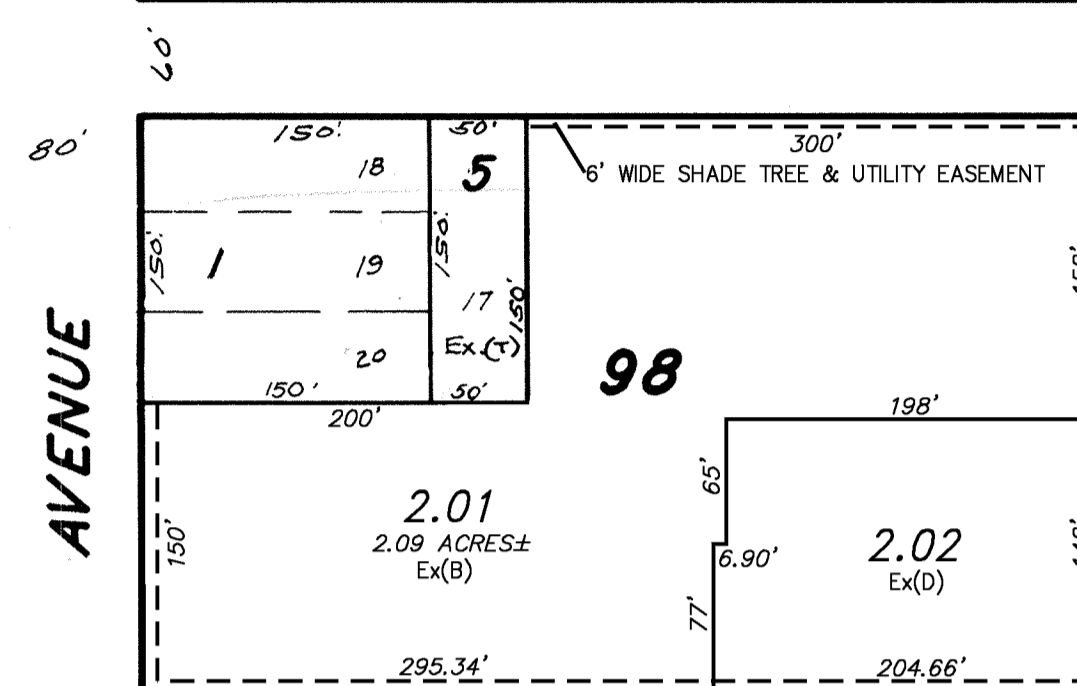
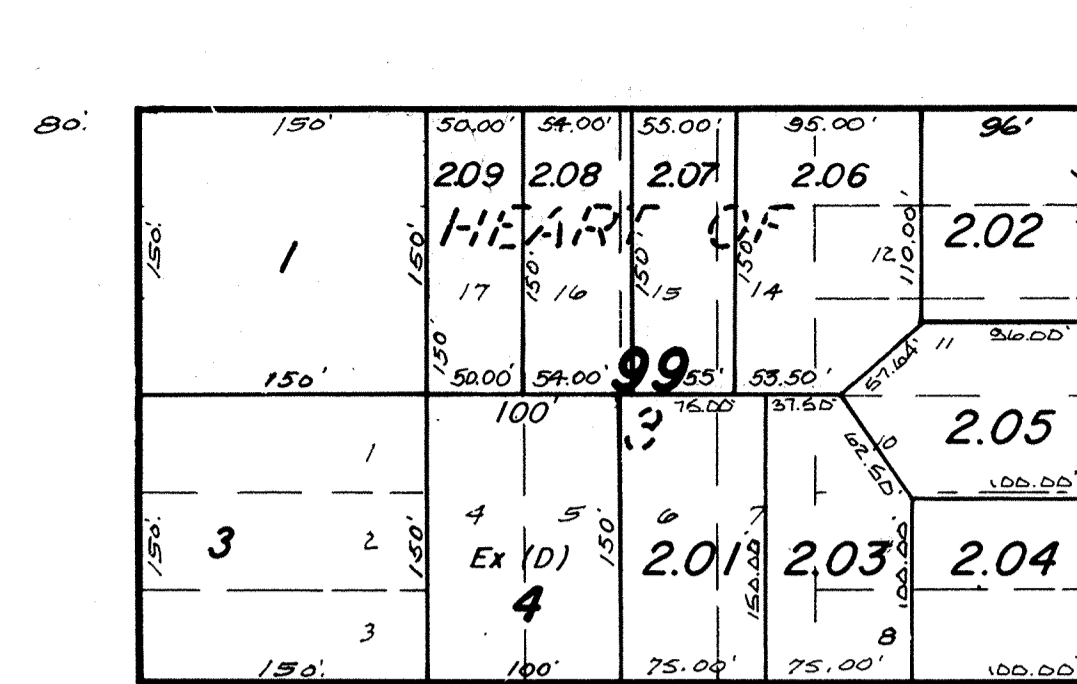
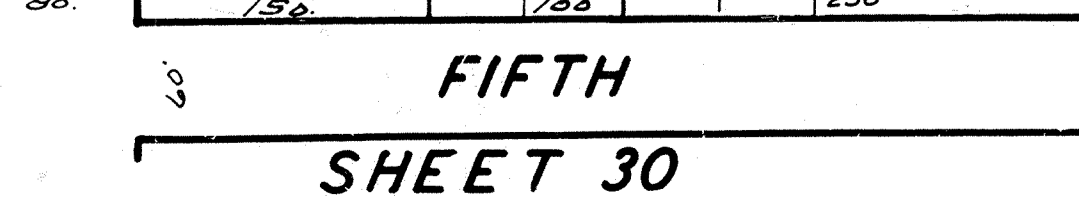
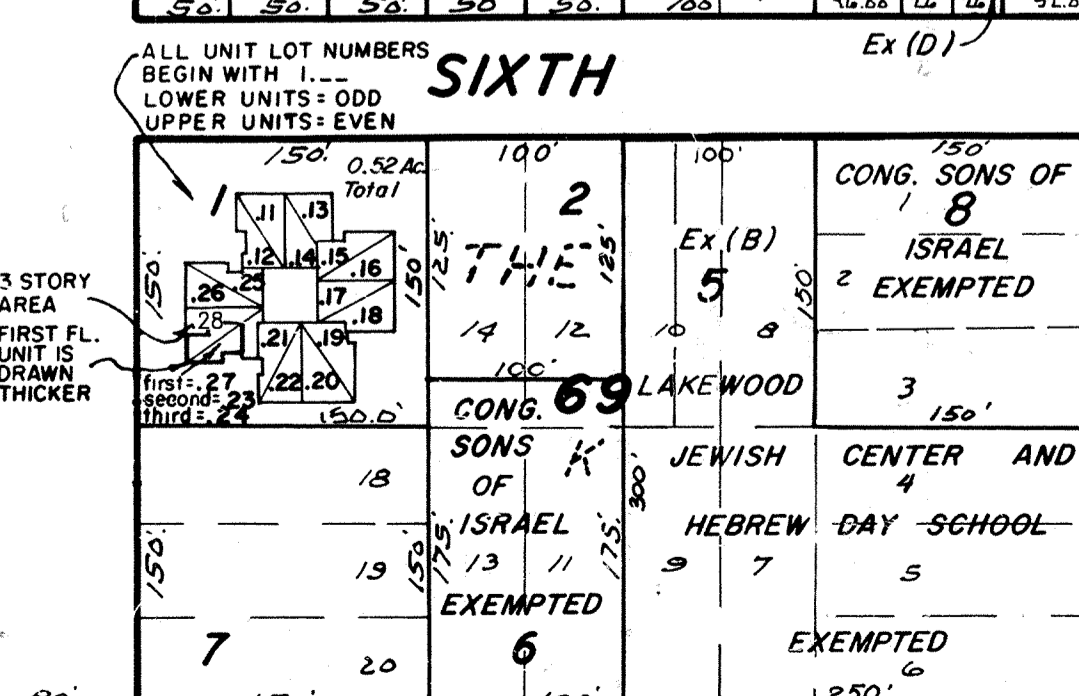
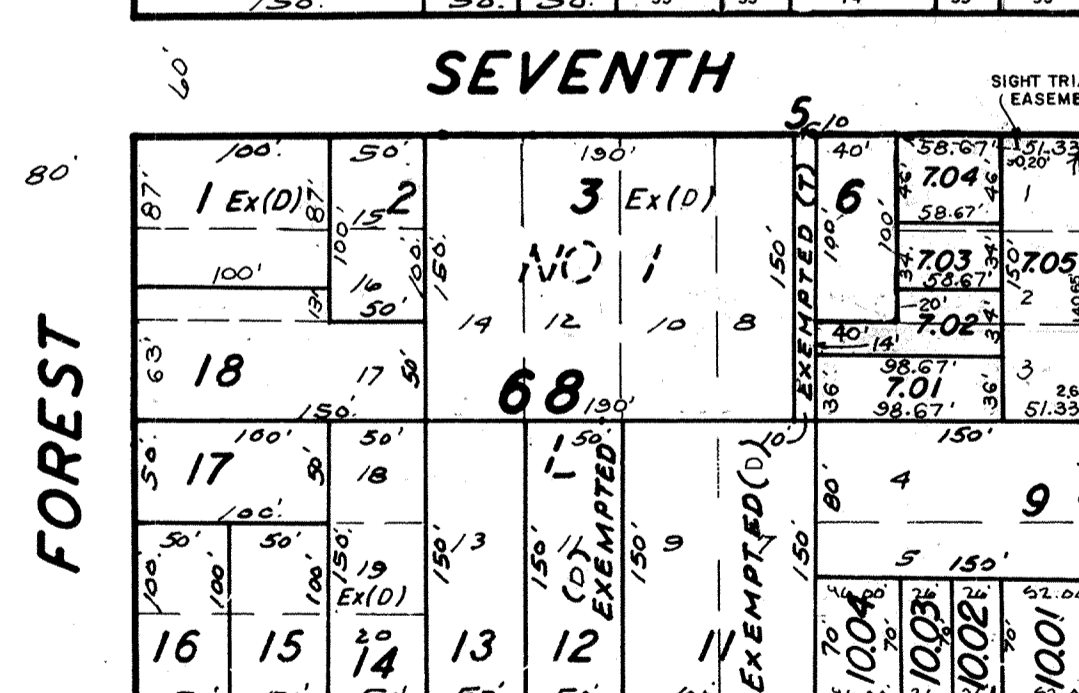
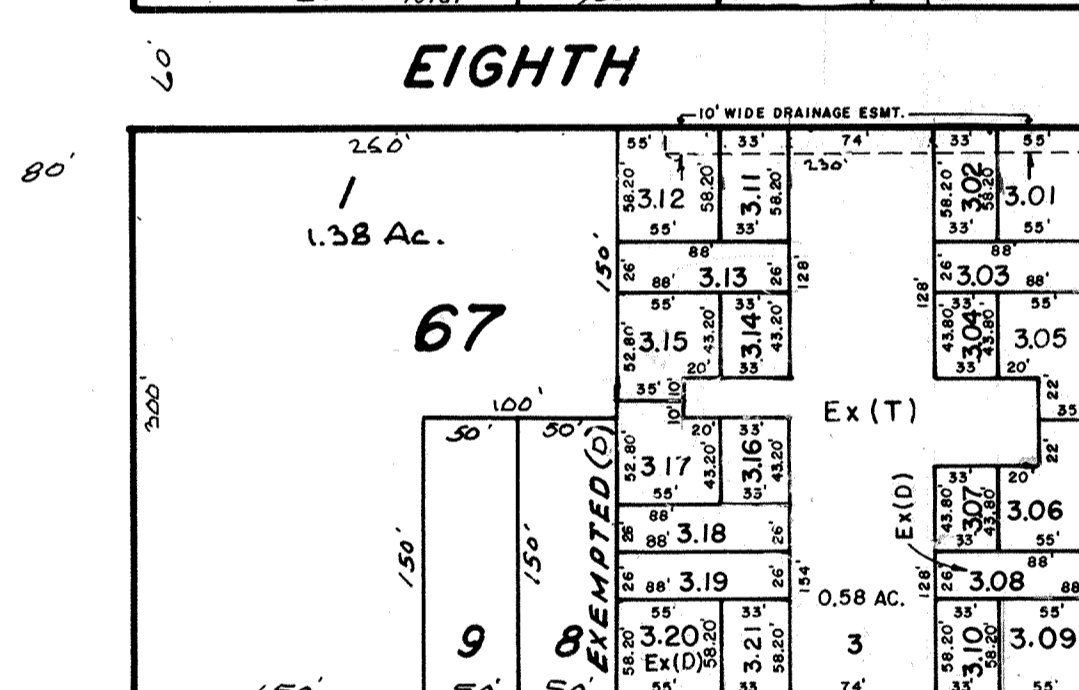
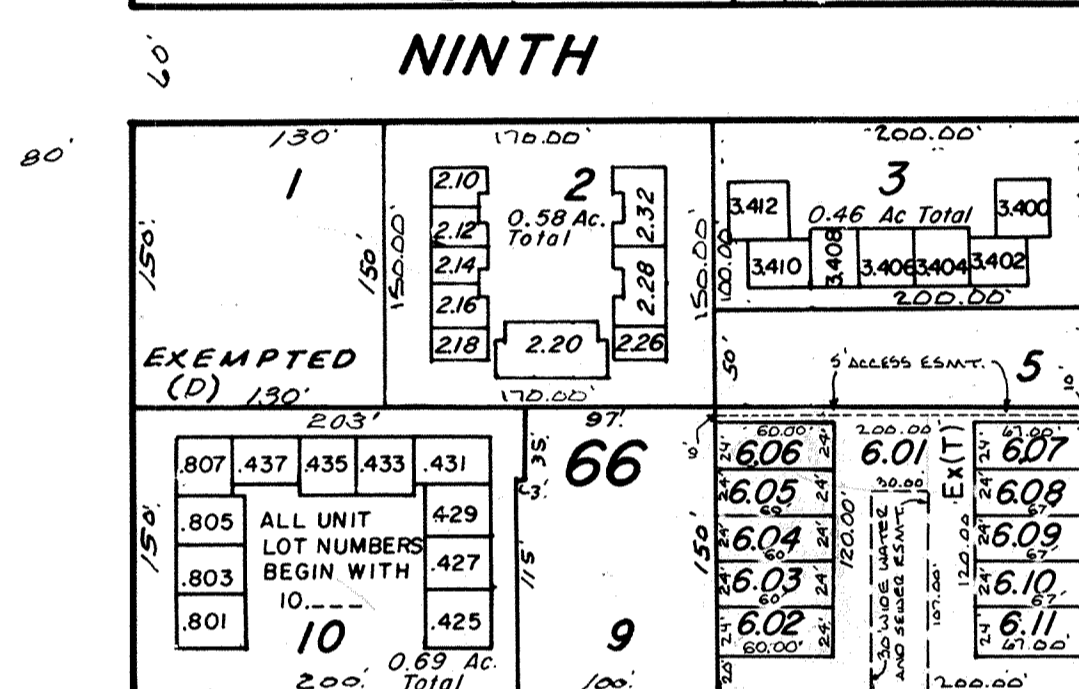
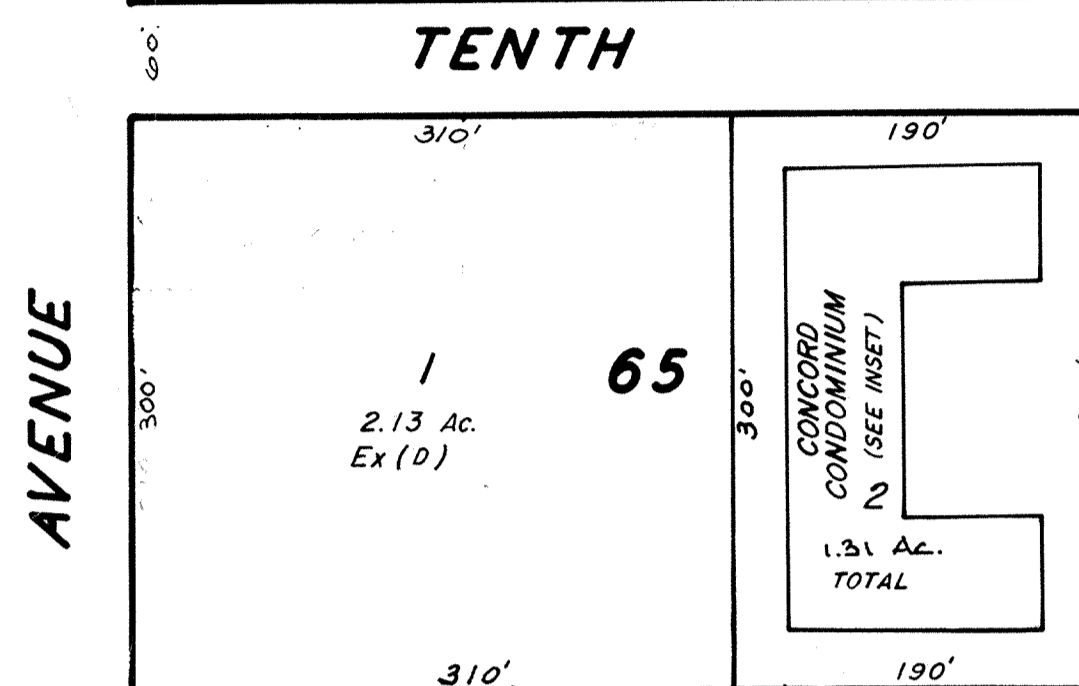
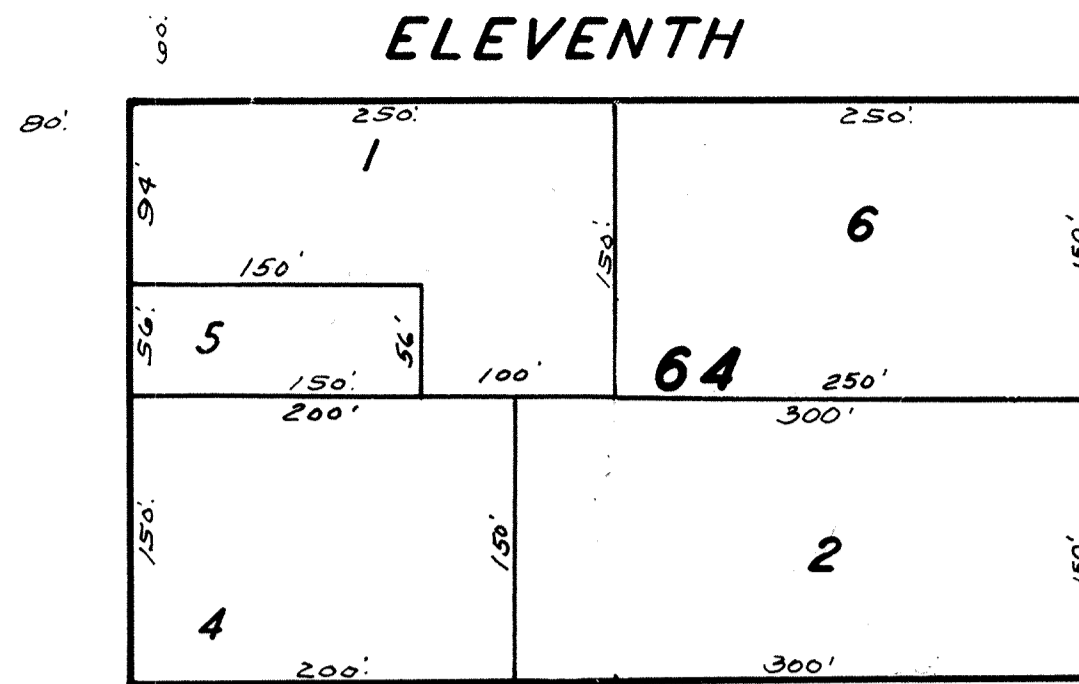
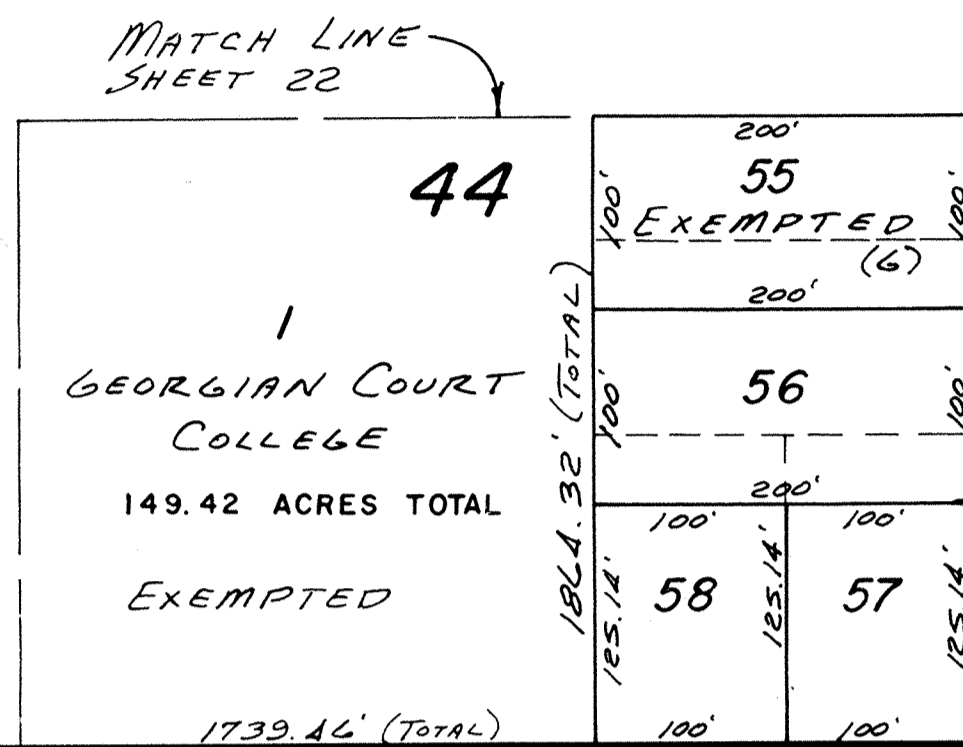
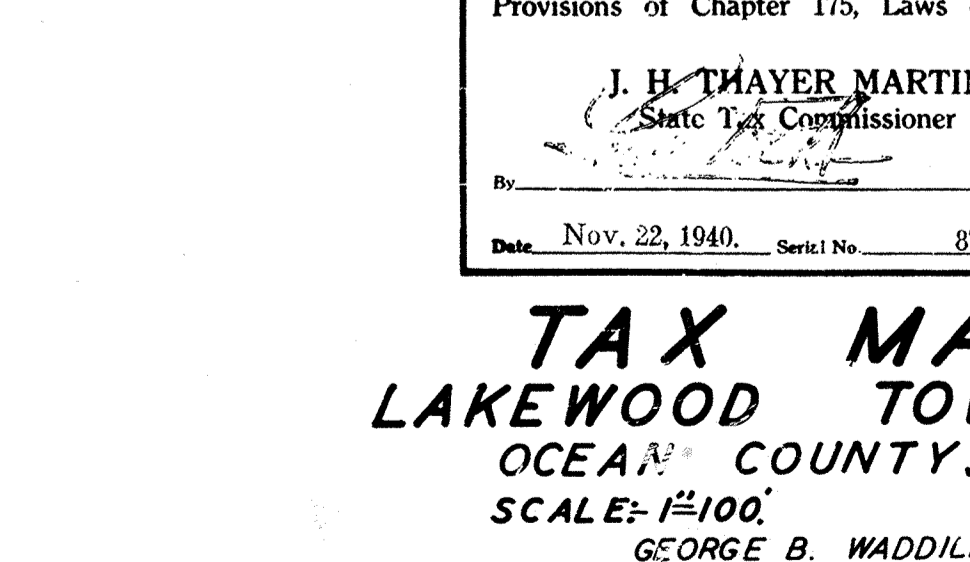
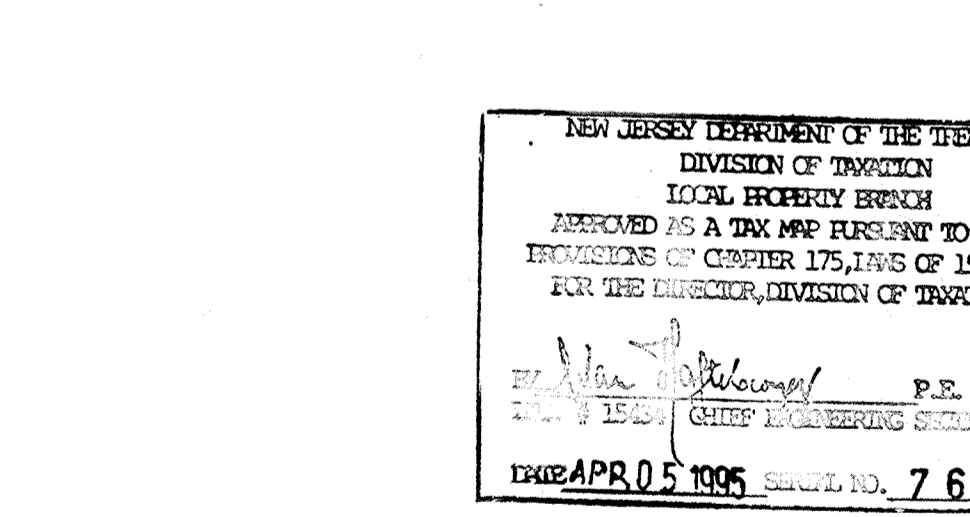
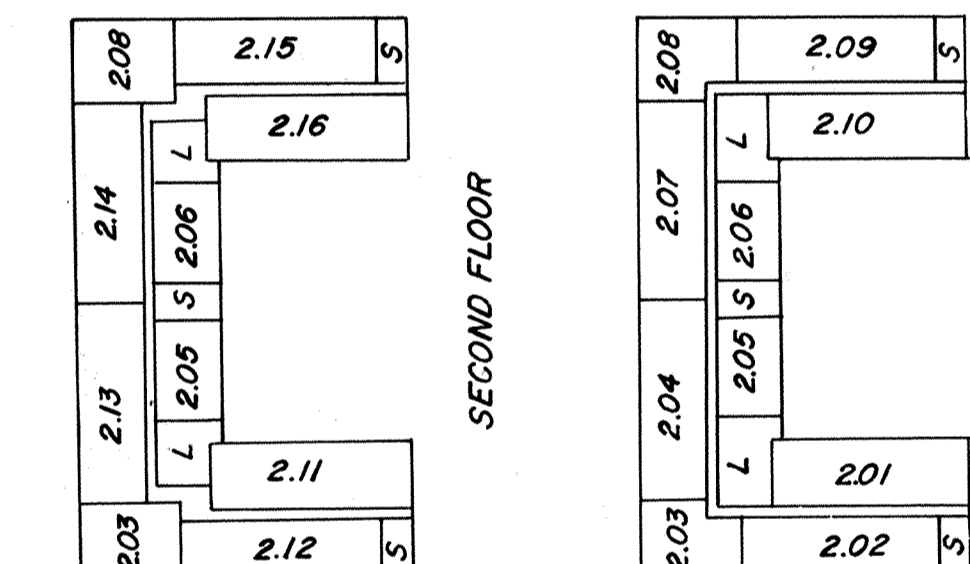
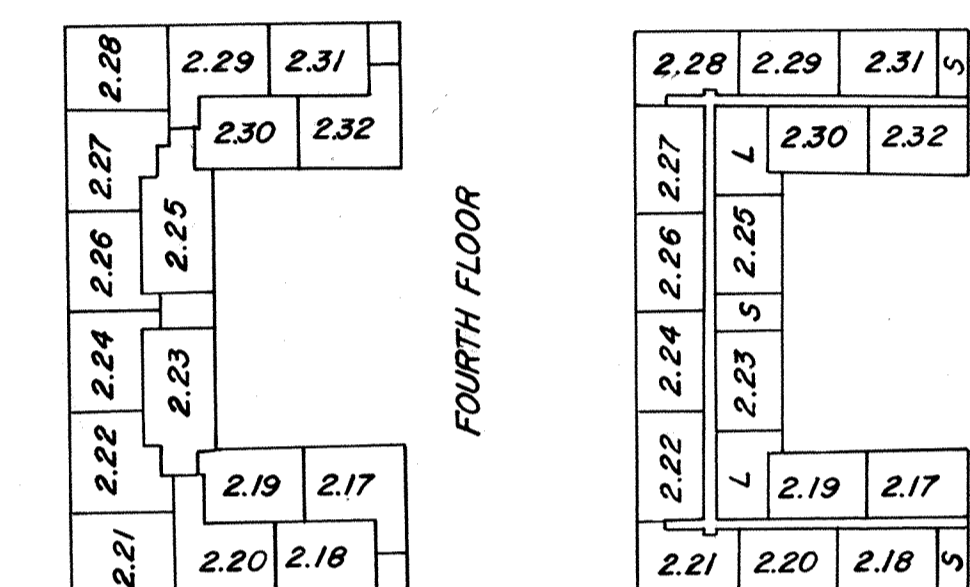


REVISIONS		
DATE	NAME	LIC. NO.
6-90	HARRY W. MAGER, JR.	L.S. 20810
11-90	HARRY W. MAGER, JR.	L.S. 20810
1-91	HARRY W. MAGER, JR.	L.S. 20810
4-91	HARRY W. MAGER, JR.	L.S. 20810
4-92	HARRY W. MAGER, JR.	P.L.S. 20810
9-92	HARRY W. MAGER, JR.	L.S. 20810
12-92	HARRY W. MAGER, JR.	L.S. 20810
3-94	HARRY W. MAGER, JR.	L.S. 20810
4-95	HARRY W. MAGER, JR.	L.S. 20810
9-96	HARRY W. MAGER, JR.	L.S. 20810



REVISIONS		
DATE	NAME	LIC. NO.
10-98	HARRY W. MAGER, JR.	L.S. 20810
12-99	HARRY W. MAGER, JR.	L.S. 19458
5-00	HARRY W. MAGER, JR.	L.S. 19458
12-02	BIRDSALL ENGINEERING, INC.	L.S. 19458
12-03	BIRDSALL ENGINEERING, INC.	L.S. 19458
12-04	BIRDSALL ENGINEERING, INC.	6827188
10-05	BIRDSALL ENGINEERING, INC.	6827188
7-06	BIRDSALL ENGINEERING, INC.	GS19458
12-07	BIRDSALL ENGINEERING, INC.	GS19458
2-08	BIRDSALL ENGINEERING, INC.	GS19458
5-09	REMINGTON & VERNICK ENGINEERS	23924
8-09	REMINGTON & VERNICK ENGINEERS	23924
11-09	REMINGTON & VERNICK ENGINEERS	23924
4-2010	REMINGTON & VERNICK ENGINEERS	23924
5-2010	REMINGTON & VERNICK ENGINEERS	23924
8-2010	REMINGTON & VERNICK ENGINEERS	23924
4-2011	REMINGTON & VERNICK ENGINEERS	23924
7-2011	REMINGTON & VERNICK ENGINEERS	23924
2-2012	REMINGTON & VERNICK ENGINEERS	23924
11-2013	REMINGTON & VERNICK ENGINEERS	23924
12-2014	REMINGTON & VERNICK ENGINEERS	42627



INSET
NTS
CONCORD CONDOMINIUMS
S INDICATES STAIRWAY
L INDICATES LOBBY

NEW JERSEY DEPARTMENT OF THE TREASURY
DIVISION OF TAXATION
LOCAL PROPERTY TAX
APPROVED AS A TAX MAP PURSUANT TO THE
PROVISIONS OF CHAPTER 175, LAWS OF 1913, ETC.
FOR THE DIRECTOR, DIVISION OF TAXATION

APR 05 1995

STATE TAX DEPARTMENT
Approved as a Tax Map According to the
Provisions of Chapter 175, Laws of 1913.

J. H. THAYER MARTIN
State Tax Commissioner

Nov. 22, 1940. Serial No. 87.

TAX MAP
LAKEWOOD TOWNSHIP
OCEAN COUNTY, N. J.
SCALE: 1"=100'
1939
GEORGE B. WADDILL
LICENSED ENGINEER & SURVEYOR
LAKEWOOD, N.J.
REVISED: 10/54 Bruce M. Larabee
5/59 ROBERT B. POWERS
8/61 DANIEL A. DeSessa
4/74 DANIEL A. DeSessa