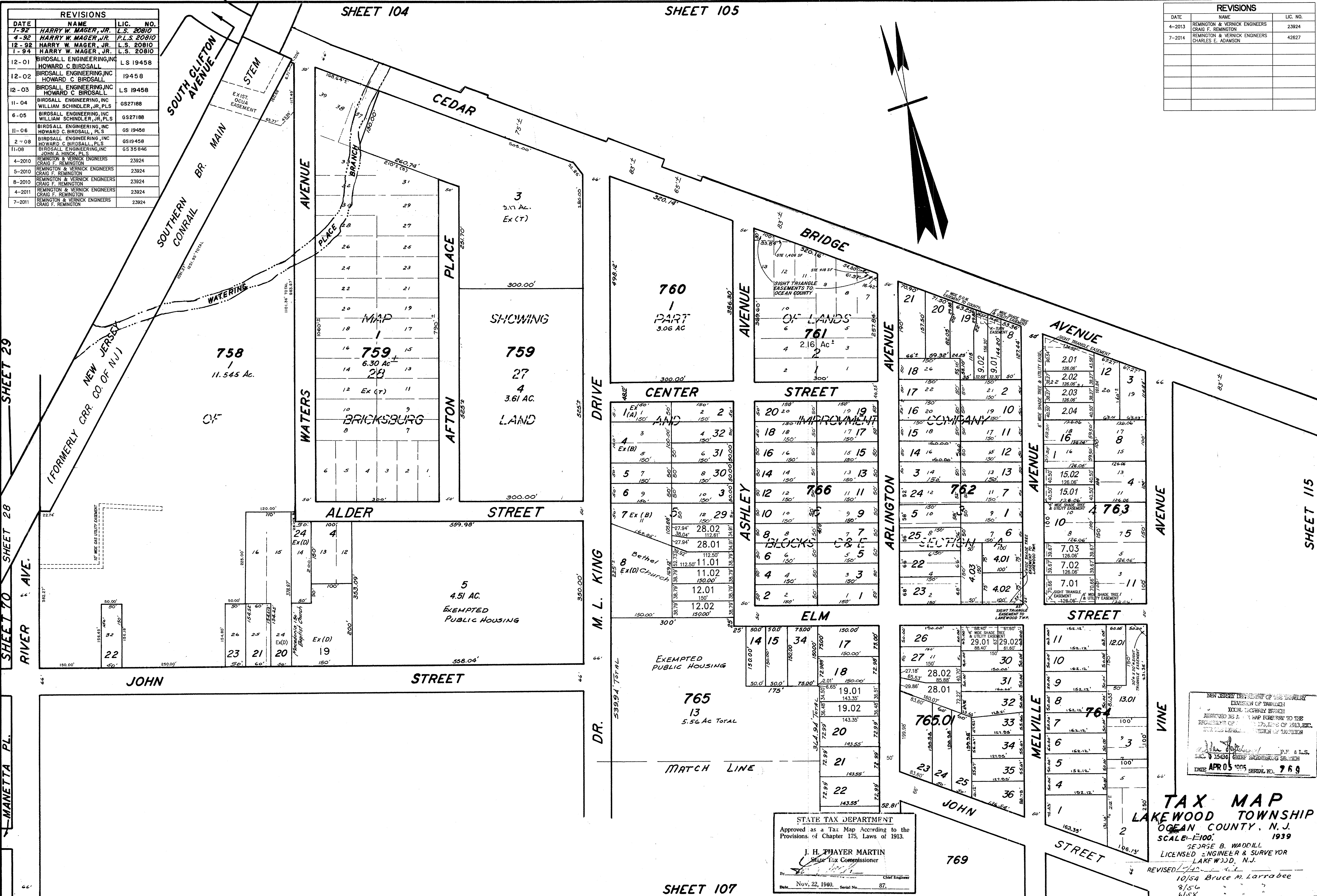


REVISIONS			
DATE	NAME	LIC. NO.	
1-92	HARRY W. MAGER, JR.	L.S. 20810	
4-92	HARRY W. MAGER, JR.	P.L.S. 20810	
12-92	HARRY W. MAGER, JR.	L.S. 20810	
1-94	HARRY W. MAGER, JR.	L.S. 20810	
12-01	BIRDSALL ENGINEERING, INC.	LS 19458	
12-02	BIRDSALL ENGINEERING, INC.	19458	
12-03	BIRDSALL ENGINEERING, INC.	LS 19458	
11-04	BIRDSALL ENGINEERING, INC.	6827188	
6-05	BIRDSALL ENGINEERING, INC.	6827188	
11-06	BIRDSALL ENGINEERING, INC.	6819458	
2-08	BIRDSALL ENGINEERING, INC.	6819458	
11-08	BIRDSALL ENGINEERING, INC.	6835846	
4-2010	REMINGTON & VERNICK ENGINEERS	23924	
5-2010	REMINGTON & VERNICK ENGINEERS	23924	
8-2010	REMINGTON & VERNICK ENGINEERS	23924	
4-2011	REMINGTON & VERNICK ENGINEERS	23924	
7-2011	REMINGTON & VERNICK ENGINEERS	23924	

REVISIONS		
DATE	NAME	LIC. NO.
4-2013	REMINGTON & VERNICK ENGINEERS	23924
7-2014	REMINGTON & VERNICK ENGINEERS	42627
	CHARLES E. ADAMSON	



SHEET 29
SHEET 28
SHEET 27
SHEET 26
SHEET 25
SHEET 24
SHEET 23
SHEET 22
SHEET 21
SHEET 20
SHEET 19
SHEET 18
SHEET 17
SHEET 16
SHEET 15
SHEET 14
SHEET 13
SHEET 12
SHEET 11
SHEET 10
SHEET 9
SHEET 8
SHEET 7
SHEET 6
SHEET 5
SHEET 4
SHEET 3
SHEET 2
SHEET 1

SHEET 115

STATE TAX DEPARTMENT
Approved as a Tax Map According to the
Provisions of Chapter 175, Laws of 1913.
J. H. THAYER MARTIN
State Tax Commissioner
By: *[Signature]* Chief Engineer
Date: Nov. 22, 1940. Serial No. 87.

NEW JERSEY DEPARTMENT OF TREASURY
DIVISION OF TAXATION
LOCAL TAXPAYER SERVICE
RECEIVED AS A MAP FOR PAY TO THE
PROPERTY OF THE TAXPAYER OF 1913, ETC.
DATE APR 05 1995 SERIAL NO. 769

TAX MAP
LAKEWOOD TOWNSHIP
OCEAN COUNTY, N.J.
SCALE: 1"=100'
1939
GEORGE B. WADDILL
LICENSED ENGINEER & SURVEYOR
LAKEWOOD, N.J.
REVISED 10/54 Bruce M. Larrabee

8-1-94 Rev. for Revaluation
11-88 UPDATE - HARRY W. MAGER, JR. - L.S.
5-89 UPDATE - HARRY W. MAGER, JR. - L.S.
12-87
2-88
10/89 STANLEY B. PETERS
3/74 DANIEL A. DESERVA
7/74
11/80
12/87
2/88
Robert B. Peters, etc.
2/81 STANLEY B. PETERS