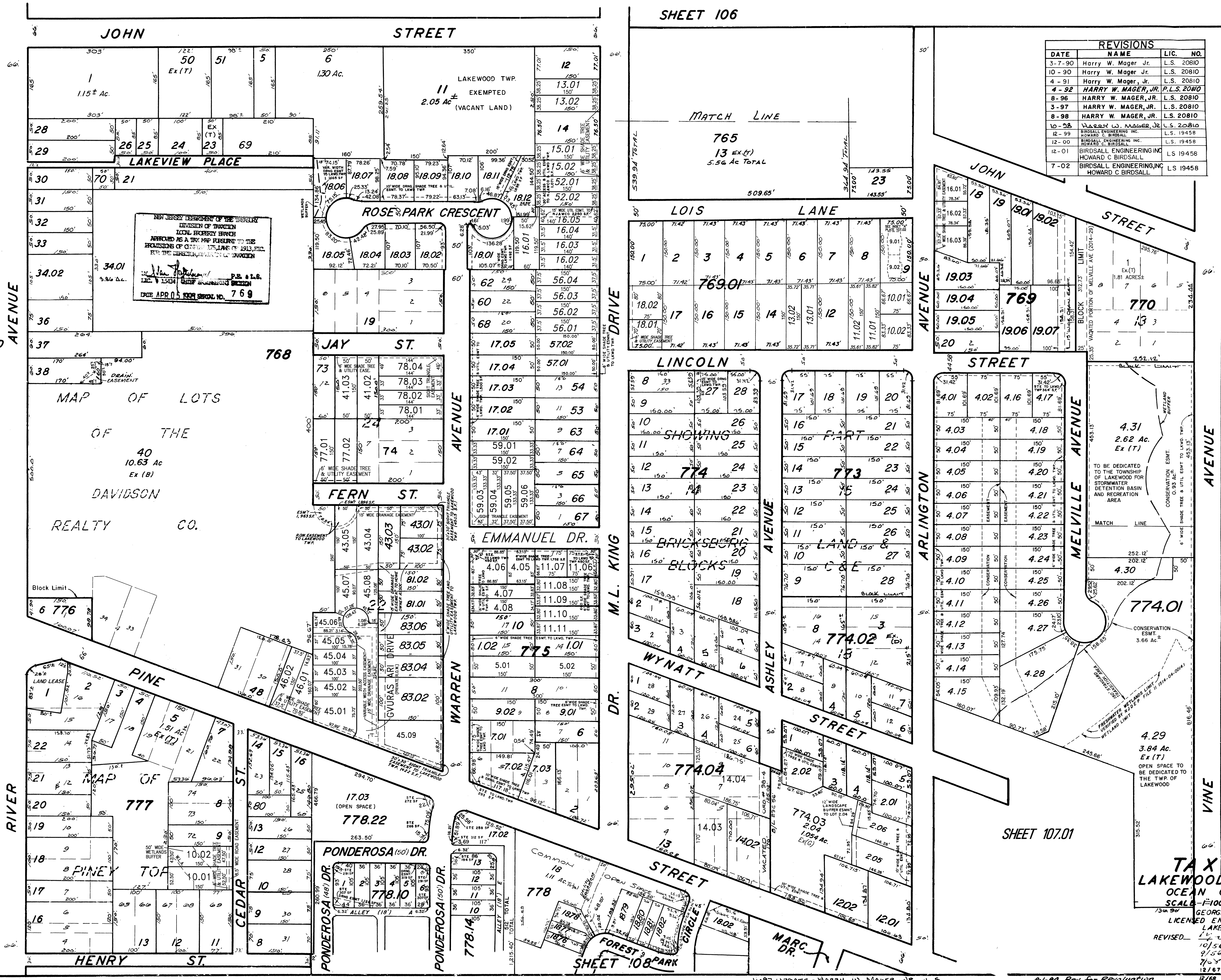


REVISIONS		
DATE	NAME	LIC. NO.
12-02	BIRDSALL ENGINEERING, INC. HOWARD C. BIRDSALL	LS 19458
12-03	BIRDSALL ENGINEERING, INC. HOWARD C. BIRDSALL	LS 19458
12-04	BIRDSALL ENGINEERING, INC. WILLIAM SCHINDLER, JR.	GS 27188
11-05	BIRDSALL ENGINEERING, INC. WILLIAM SCHINDLER, JR. PLS	GS 27188
11-06	BIRDSALL ENGINEERING, INC. HOWARD C. BIRDSALL, PLS	GS 19458
6-07	BIRDSALL ENGINEERING, INC. HOWARD C. BIRDSALL, PLS	GS 19458
2-08	BIRDSALL ENGINEERING, INC. HOWARD C. BIRDSALL, PLS	GS 19458
10-08	BIRDSALL ENGINEERING, INC. JOHN A. HINCK, PLS	GS 35846

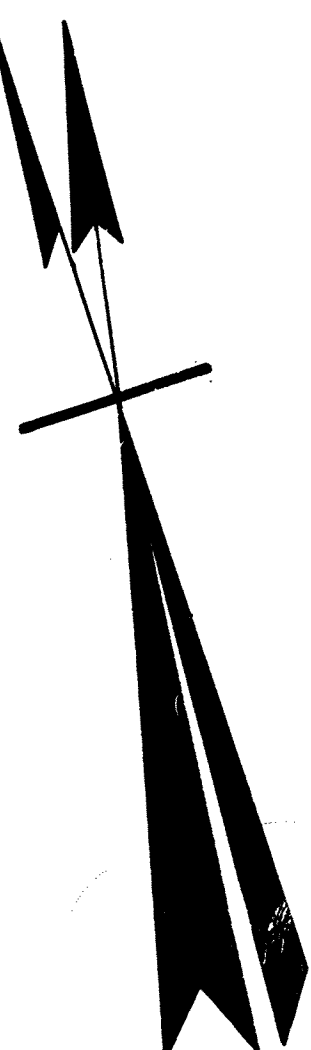
REVISIONS		
DATE	NAME	LIC. NO.
8-2009	HARRY W. MAGER, JR.	PLS 20810
11-2009	CRAIG F. REMINGTON	23924
4-2010	CRAIG F. REMINGTON	23924
5-2010	CRAIG F. REMINGTON	23924
8-2010	CRAIG F. REMINGTON	23924
11-2010	CRAIG F. REMINGTON	23924
4-2011	CRAIG F. REMINGTON	23924

REVISIONS		
DATE	NAME	LIC. NO.
2-2012	REMNANT & VERNICK ENGINEERS	42827
3-2012	REMNANT & VERNICK ENGINEERS	42827
5-2012	REMNANT & VERNICK ENGINEERS	42827
8-2012	REMNANT & VERNICK ENGINEERS	42827
4-2013	REMNANT & VERNICK ENGINEERS	42827
9-2013	REMNANT & VERNICK ENGINEERS	42827
11-2013	REMNANT & VERNICK ENGINEERS	42827

REVISIONS		
DATE	NAME	LIC. NO.
5-2014	REMNANT & VERNICK ENGINEERS	42827
7-2014	REMNANT & VERNICK ENGINEERS	42827
10-2014	REMNANT & VERNICK ENGINEERS	42827



REVISIONS		
DATE	NAME	LIC. NO.
3-7-90	Harry W. Mager Jr.	L.S. 20810
10-90	Harry W. Mager Jr.	L.S. 20810
4-91	Harry W. Mager, Jr.	L.S. 20810
4-92	HARRY W. MAGER, JR.	P.L.S. 20810
8-96	HARRY W. MAGER, JR.	L.S. 20810
3-97	HARRY W. MAGER, JR.	L.S. 20810
8-98	HARRY W. MAGER, JR.	L.S. 20810
10-98	HARRY W. MAGER, JR.	L.S. 20810
12-99	BIRDSALL ENGINEERING, INC. HOWARD C. BIRDSALL	L.S. 19458
12-00	BIRDSALL ENGINEERING, INC. HOWARD C. BIRDSALL	L.S. 19458
12-01	BIRDSALL ENGINEERING, INC. HOWARD C. BIRDSALL	L.S. 19458
7-02	BIRDSALL ENGINEERING, INC. HOWARD C. BIRDSALL	L.S. 19458



STATE TAX DEPARTMENT
Approved as a Tax Map According to the
Provisions of Chapter 175, Laws of 1913.
J. H. THAYER MARTIN
State Tax Commissioner

Note: Part of JOHN STREET and ASHLEY AVENUE vacated by TOWNSHIP Comm. Dec. 1967.
Block 765 revised to conform to amended map of FULTON-JOHN STREET URBAN RENEWAL PROJECT dated June 19, 1968.

TAX MAP
LAKEWOOD TOWNSHIP
OCEAN COUNTY, N.J.
SCALE 1"=100'
1939
GEORGE B. WADDILL
LICENSED ENGINEER & SURVEYOR
LAKEWOOD, N.J.
REVISED
10/54 Bruce A. Larrabee
9/56
7/58
12/67 Robert B. Powers

8-1-94 Rev. for Revision
2-85 Update
11-85
3-86 Correction
12/68
7/79 Daniel A. D'Sessa
3/74
5/74
11/74