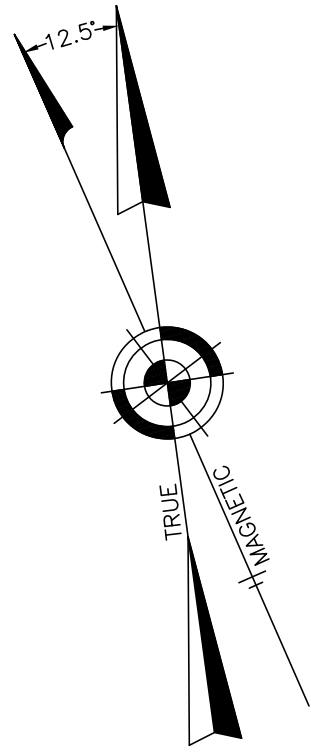


REVISIONS		
10-2011	CRAIG F. REMINGTON	23924
2-2013	CRAIG F. REMINGTON	23924



SHEET 108

SHEET 107.01

SHEET 114

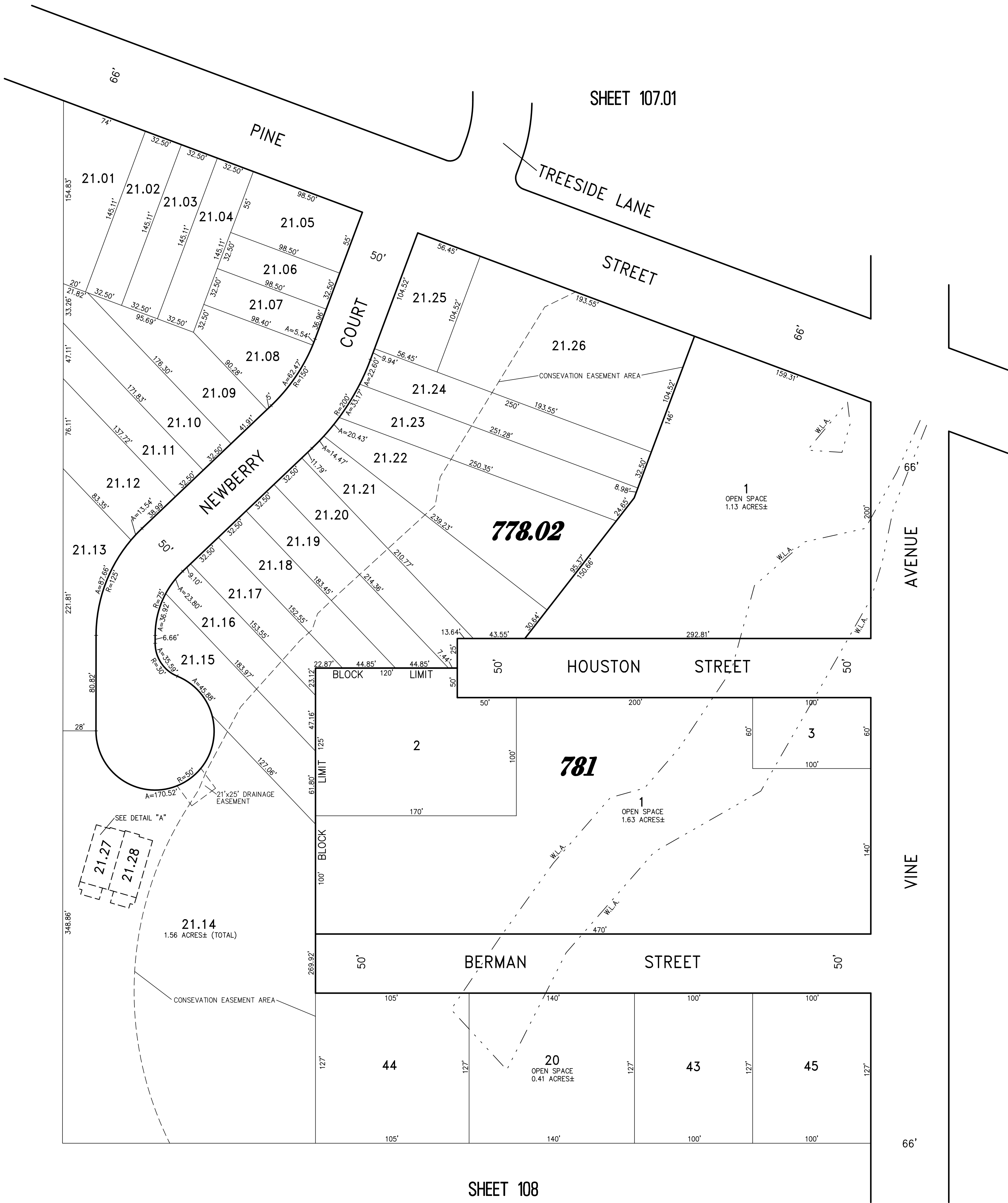
SHEET 113

SHEET 108

PINE RIVER GARDENS CONDOMINIUM
BLOCK 778.02 LOT 21.14
TWO STORY & ONE HALF

DECK	DECK
24.60'	24.90'
21.28 C1000 UNIT 14 1258.51 S.F.	21.27 C1000 UNIT 13 1261.51 S.F.
50.30'	52'
12'	51'
1.70'	12.60'
13'	11.90'

DETAIL "A"
SCALE: 1"=30'



TAX MAP
TOWNSHIP OF LAKEWOOD

OCEAN COUNTY NEW JERSEY
SCALE: 1"=50' DATE: 2-27-2009

CRAIG F. REMINGTON LAND SURVEYOR LIC. NO. 23924



REMINGTON, VERNICK & VENA ENGINEERS
9 ALLEN STREET, TOMS RIVER, N.J. 08753
(732) 286-9220, FAX (732) 505-8416
WEB SITE ADDRESS: WWW.RVVE.COM