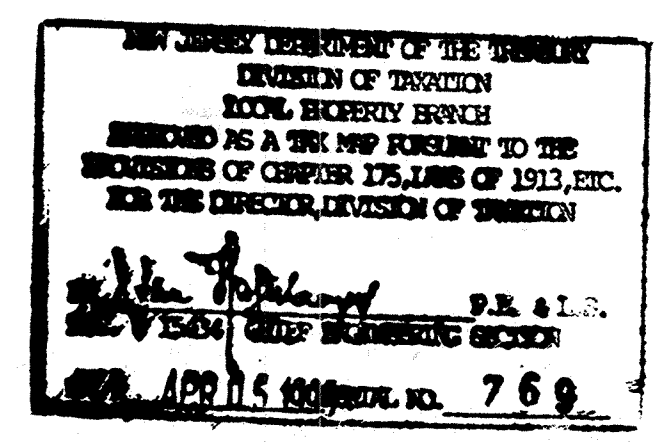
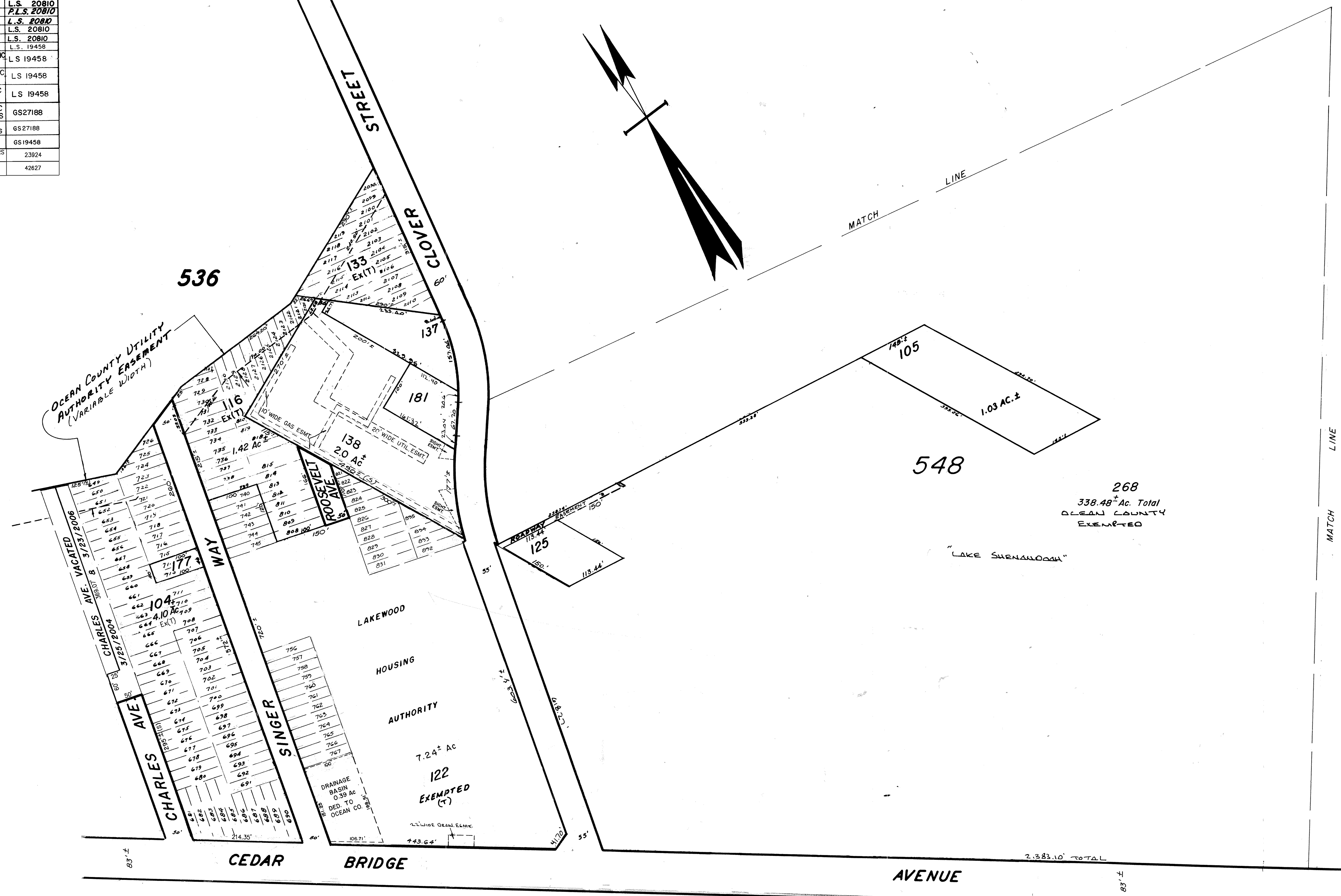


REVISIONS		
DATE	NAME	LIC. NO.
8-90	Harry W. Mager Jr.	L.S. 20810
7-91	Harry W. Mager Jr.	L.S. 20810
4-92	HARRY W. MAGER, JR.	P.L.S. 20810
12-92	HARRY W. MAGER, JR.	L.S. 20810
4-96	HARRY W. MAGER, JR.	L.S. 20810
8-96	HARRY W. MAGER, JR.	L.S. 20810
6-00	HOWARD C. BIRDSALL	L.S. 19458
12-01	BIRDSALL ENGINEERING, INC.	L.S. 19458
10-02	HOWARD C. BIRDSALL	L.S. 19458
7-03	BIRDSALL ENGINEERING, INC.	L.S. 19458
11-04	BIRDSALL ENGINEERING, INC.	GS27188
11-05	BIRDSALL ENGINEERING, INC.	GS27188
4-06	BIRDSALL ENGINEERING, INC.	GS19458
5-2010	REMINGTON & VERNICK ENGINEERS	23924
7-2014	REMINGTON & VERNICK ENGINEERS	42827



STATE TAX DEPARTMENT
Approved as a Tax Map According to the
Provisions of Chapter 175, Laws of 1913.
J. H. THAYER MARTIN
State Tax Commissioner
Nov. 22, 1940. Serial No. 27.

TAX MAP
LAKEWOOD TOWNSHIP
OCEAN COUNTY, N. J.
SCALE: 1" = 100' 1939
GEORGE B. WADDILL
LICENSED ENGINEER & SURVEYOR
LAKEWOOD, N.J.
REVISED 10/54 Bruce M. Larrabee
7/54 Daniel A. DeSessa
3/74 STANLEY B. PETERS

8-1-84 Rev. for Revaluation
2-85 Update
11-88 UPDATE - HARRY W. MAGER, JR. - L.S.
5-00 UPDATE - HARRY W. MAGER, JR. - L.S.
4-00 Rev. for Revaluation - HARRY W. MAGER, JR. - L.S.