

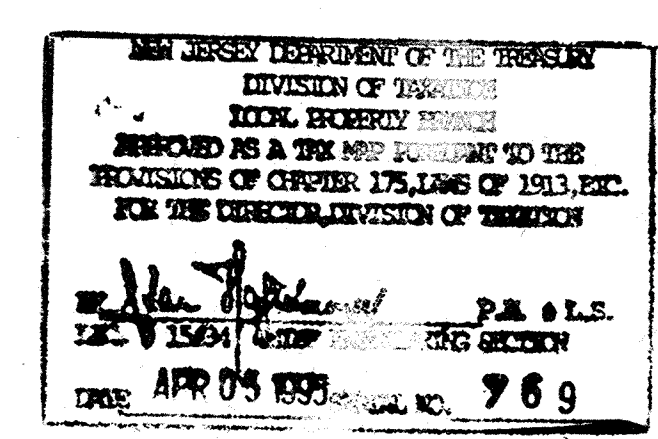
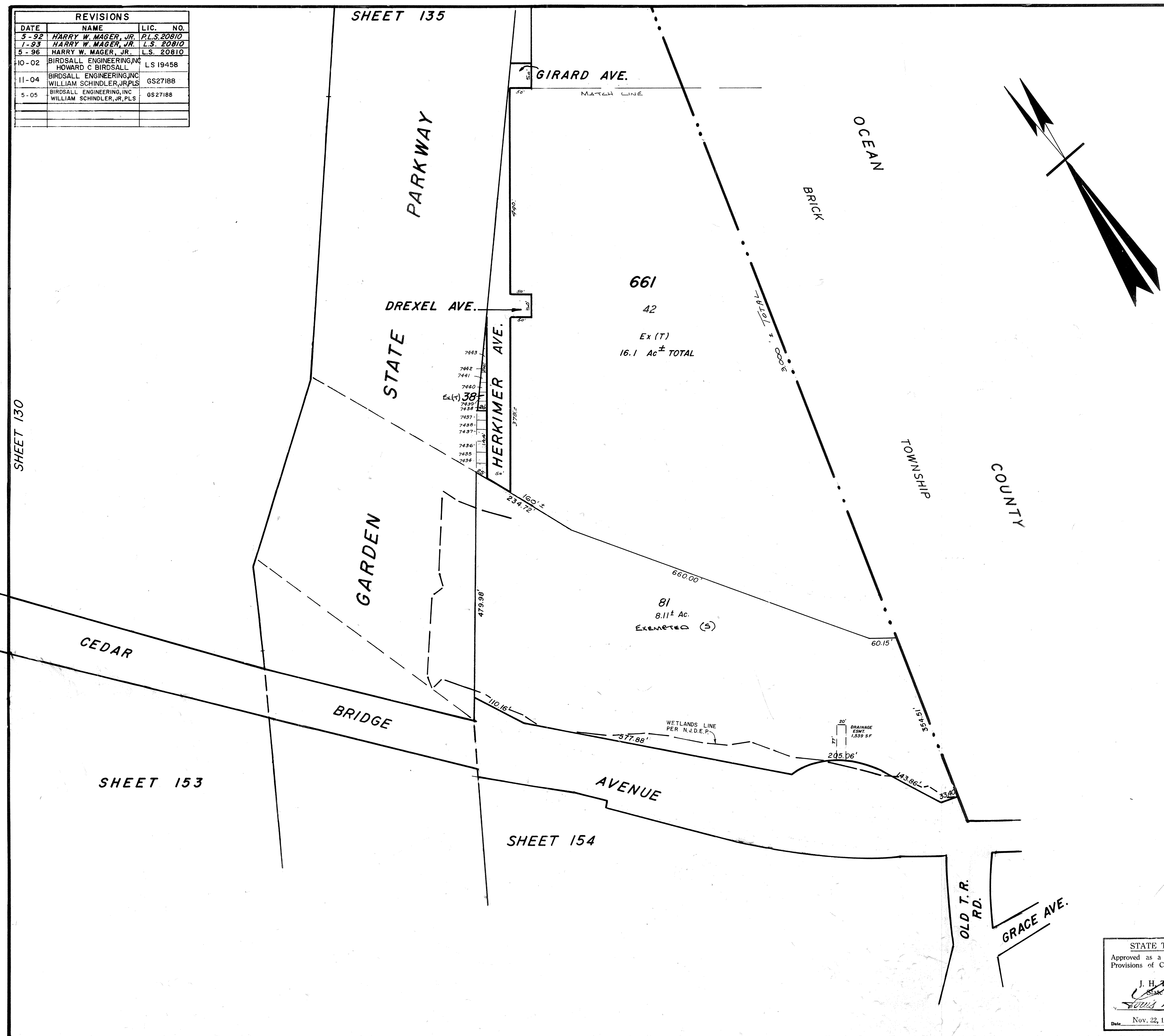
REVISIONS			
DATE	NAME	LIC.	NO.
5-92	HARRY W. MAGER, JR.	P.L.S.	20810
7-93	HARRY W. MAGER, JR.	L.S.	20810
5-96	HARRY W. MAGER, JR.	L.S.	20810
10-02	BIRDSALL ENGINEERING, INC. HOWARD C. BIRDSALL	LS	19458
11-04	BIRDSALL ENGINEERING, INC. WILLIAM SCHINDLER, JR./PLS	GS	27188
5-05	BIRDSALL ENGINEERING, INC. WILLIAM SCHINDLER, JR./PLS	GS	27188

SHEET 135

SHEET 130

SHEET 153

SHEET 154



STATE TAX DEPARTMENT  
Approved as a Tax Map According to the Provisions of Chapter 175, Laws of 1913.  
J. H. TRAYER MARTIN  
State Tax Commissioner  
Nov. 22, 1940, Serial No. 87.

**TAX MAP**  
**LAKEWOOD TOWNSHIP**  
**OCEAN COUNTY, N. J.**  
SCALE: 1"=100' 1939  
GEORGE B. WADDILL  
LICENSED ENGINEER & SURVEYOR  
LAKEWOOD, N.J.  
REVISED 12/12/1940  
10/54 Bruce M. Larrabee  
9/56  
7/74 Daniel A. DeSessa

9-1-34 Rev. for Revaluation  
11-28 UPDATE - HARRY W. MAGER, JR. - L.S.  
7-25 Rev. for Revaluation - HARRY W. MAGER, JR. - L.S.