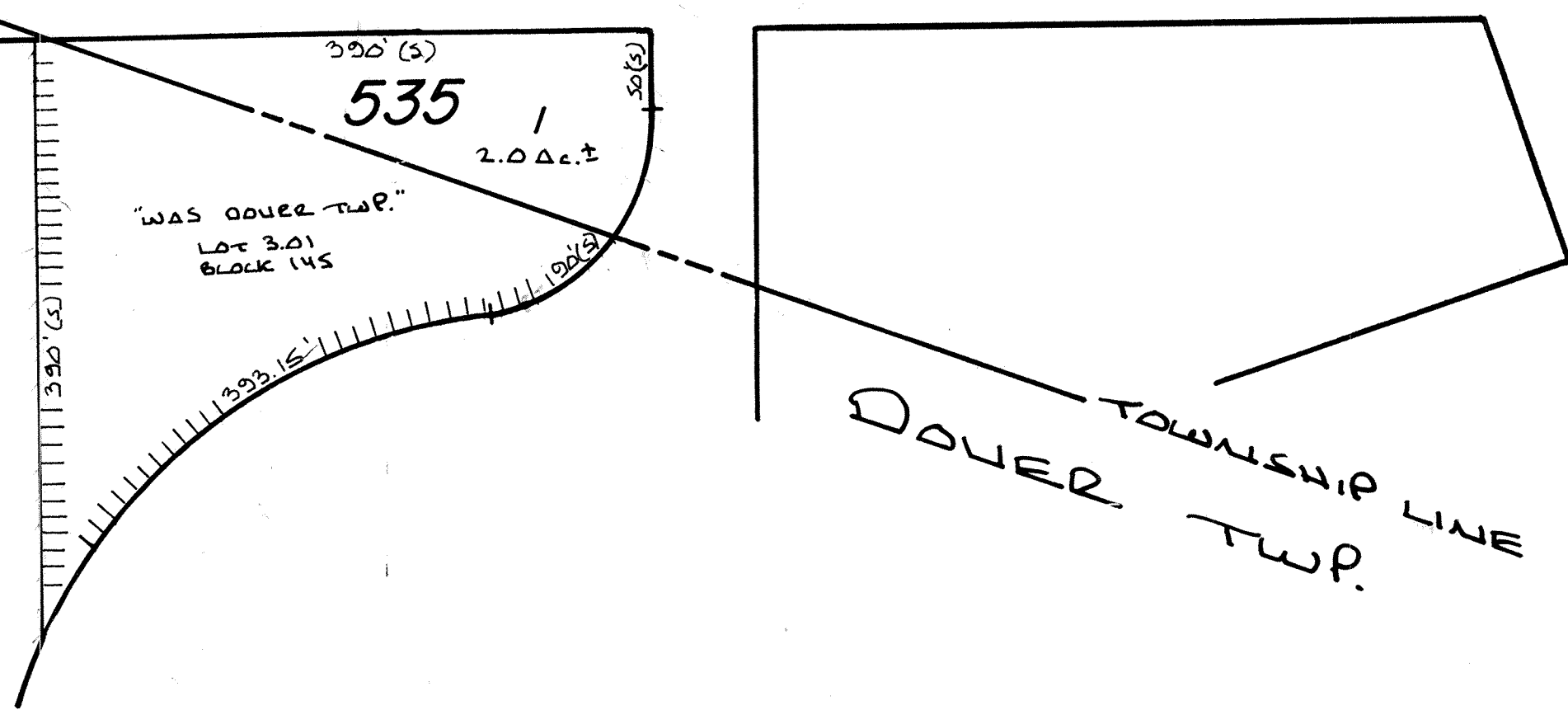


REVISIONS			REVISIONS		
DATE	NAME	LIC. NO.	DATE	NAME	LIC. NO.
4-90	Harry W. Mager, Jr.	L.S. 20810	12-99	BIRDSALL ENGINEERING INC.	L.S. 19458
6-91	HARRY W. MAGER, JR.	L.S. 20810	6-02	BIRDSALL ENGINEERING INC.	L.S. 19458
5-92	HARRY W. MAGER, JR.	P.L.S. 20810	5-03	BIRDSALL ENGINEERING INC.	L.S. 19458
1-93	HARRY W. MAGER, JR.	L.S. 20810	11-05	BIRDSALL ENGINEERING INC.	GS27188
5-96	HARRY W. MAGER, JR.	L.S. 20810	11-08	BIRDSALL ENGINEERING INC.	GS35846
11-97	HARRY W. MAGER, JR.	L.S. 20810	5-2014	ROMINGTON & VORICK ENGINEERS	42627
8-98	HARRY W. MAGER, JR.	L.S. 20810			
12-98	HARRY W. MAGER, JR.	L.S. 20810			



NEW JERSEY DEPARTMENT OF THE TREASURY  
DIVISION OF TAXATION  
LOCAL HOUSING BOARD  
APPROVED AS A TAX MAP SUBMITTING TO THE  
BOARDS OF CHAPTER 175, LAWS OF 1913, ETC.  
FOR THE DIRECTOR, DIVISION OF TAXATION  
J. H. Thayer Martin  
State Tax Commissioner  
APR 05 1905 769

STATE TAX DEPARTMENT  
Approved as a Tax Map According to the  
Provisions of Chapter 175, Laws of 1913.  
J. H. THAYER MARTIN  
State Tax Commissioner  
By: \_\_\_\_\_ Chief Engineer  
Date: Nov. 22, 1940. Serial No. 87.

**TAX MAP**  
**LAKEWOOD TOWNSHIP**  
**OCEAN COUNTY, N.J.**  
SCALE: 1"=100' 1939  
GEORGE B. WADDILL  
LICENSED ENGINEER & SURVEYOR  
LAKEWOOD, N.J.  
REVISED 12/57  
10/54 Bruce M. Larrabee  
12/57  
10/69 STANLEY B. PETERS  
1/73 Daniel A. DeJessa  
4/75

8-88 UPDATE - HARRY W. MAGER, JR. - L.S. 7-1-84 Rev for Revaluation  
6-88 UPDATE - HARRY W. MAGER, JR. - L.S. 9-85 Update  
7-88 REV. FOR REVALUATION - HARRY W. MAGER, JR. - L.S. 10-86 Update  
11-88 UPDATE - HARRY W. MAGER, JR. - L.S. 12-87 Update - HARRY W. MAGER, JR. - L.S.