

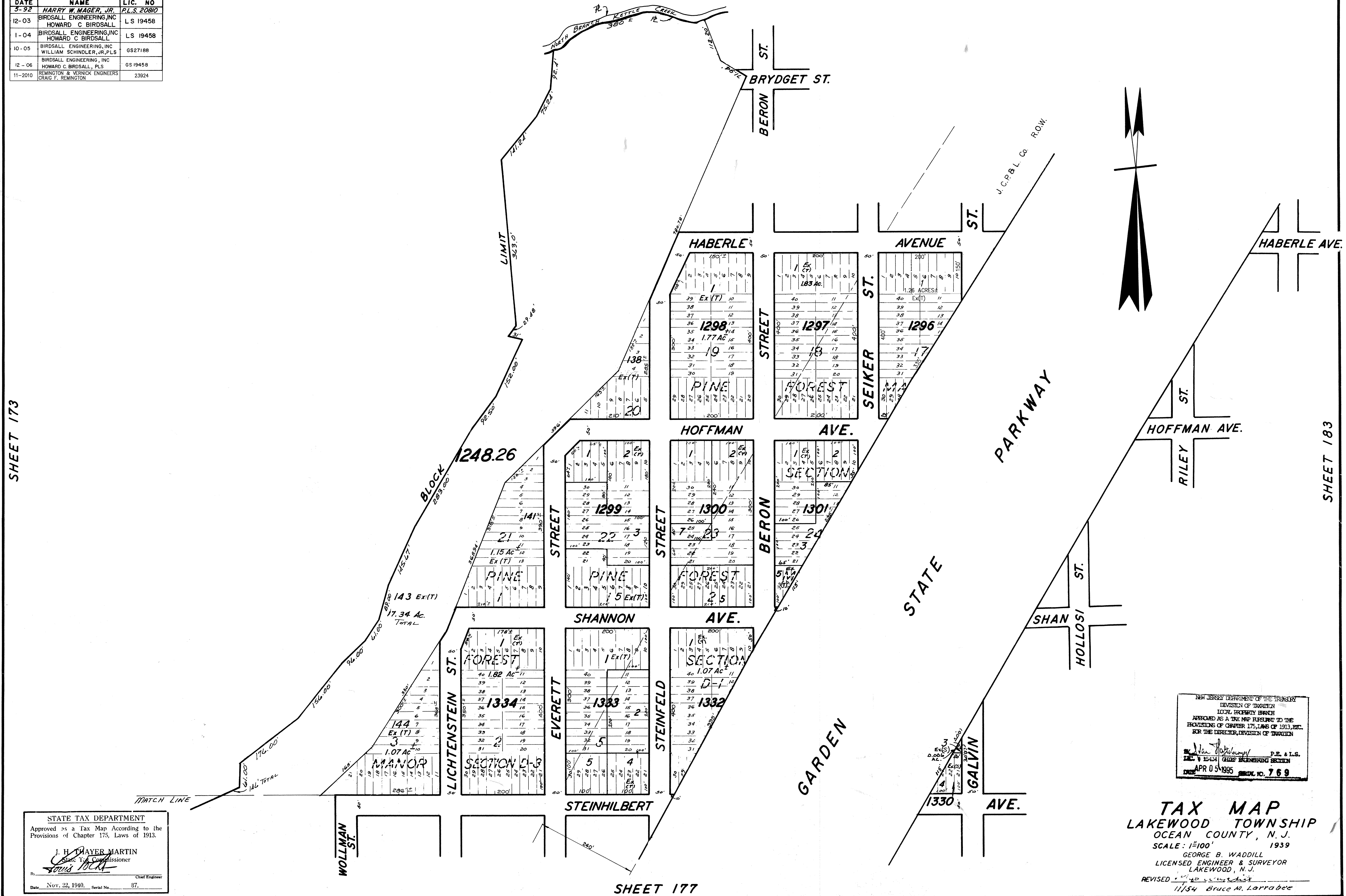
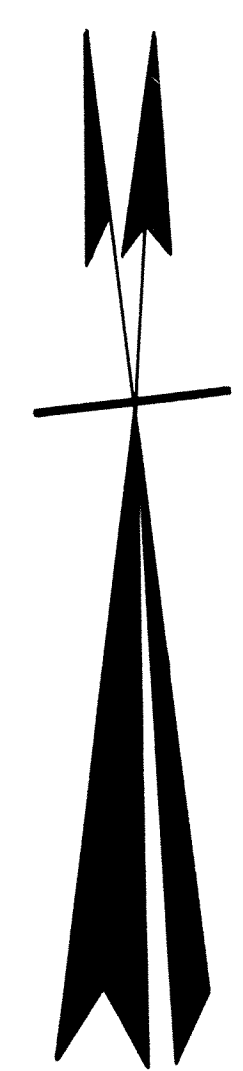
REVISIONS		
DATE	NAME	LIC. NO
5-92	HARRY W. MAGER, JR.	P.L.S. 20810
12-03	BIRDSALL ENGINEERING, INC. HOWARD C BIRDSALL	LS 19458
1-04	BIRDSALL ENGINEERING, INC. HOWARD C BIRDSALL	LS 19458
10-05	BIRDSALL ENGINEERING, INC. WILLIAM SCHINDLER, JR., PLS	GS27188
12-06	BIRDSALL ENGINEERING, INC. HOWARD C BIRDSALL, PLS	GS 19458
11-2010	REMINGTON & VERNICK ENGINEERS GRAIG F. REMINGTON	23924

SHEET 174

SHEET 175

SHEET 173

SHEET 183



STATE TAX DEPARTMENT
Approved as a Tax Map According to the
Provisions of Chapter 175, Laws of 1913.
J. H. THAYER MARTIN
State Tax Commissioner
Date Nov. 22, 1940. Serial No. 87.

NEW JERSEY DEPARTMENT OF THE TREASURY
DIVISION OF TAXATION
LOCAL PROPERTY TAX
APPROVED AS A TAX MAP PURSUANT TO THE
PROVISIONS OF CHAPTER 175, LAWS OF 1913, ETC.
FOR THE DIRECTOR, DIVISION OF TAXATION
APR 05 1995
P.E. & L.S.
Daniel A. De Sessa

TAX MAP
LAKEWOOD TOWNSHIP
OCEAN COUNTY, N. J.
SCALE: 1"=100'
1939
GEORGE B. WADDILL
LICENSED ENGINEER & SURVEYOR
LAKEWOOD, N. J.
REVISED 11/54 Bruce M. Larrabee

11-88 UPDATE - HARRY W. MAGER JR. L.S. 177/88 William R. Mouzy 5/78
6-88 UPDATE - HARRY W. MAGER JR. L.S. 177/88 Robert B. Powers 7/15
7-88 BEFORE RE-EVALUATION - HARRY W. MAGER JR. L.S. 177/88 Daniel A. De Sessa
11-88 UPDATE - HARRY W. MAGER JR. L.S. 177/88 8/74