

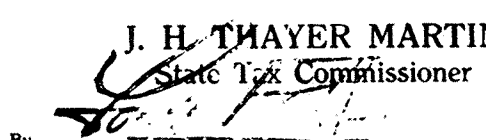
REVISIONS		
DATE	NAME	LIC. NO.
4-90	Harry W. Mager, Jr.	L.S. 20810
5-92	HARRY W. MAGER, JR.	P.L.S. 20810
12-94	HARRY W. MAGER, JR.	P.L.S. 20810
12-95	HARRY W. MAGER, JR.	L.S. 20810
4-02	BIRDSALL ENGINEERING INC HOWARD C BIRDSALL	L.S. 19458
12-03	BIRDSALL ENGINEERING INC HOWARD C BIRDSALL	L.S. 19458
1-04	BIRDSALL ENGINEERING INC HOWARD C BIRDSALL	L.S. 19458
11-05	BIRDSALL ENGINEERING INC WILLIAM SCHINDLER JR. P.L.S.	GS 27188
12-2011	REMINGTON & VERNICK ENGINEERS CRAIG F. REMINGTON	23924

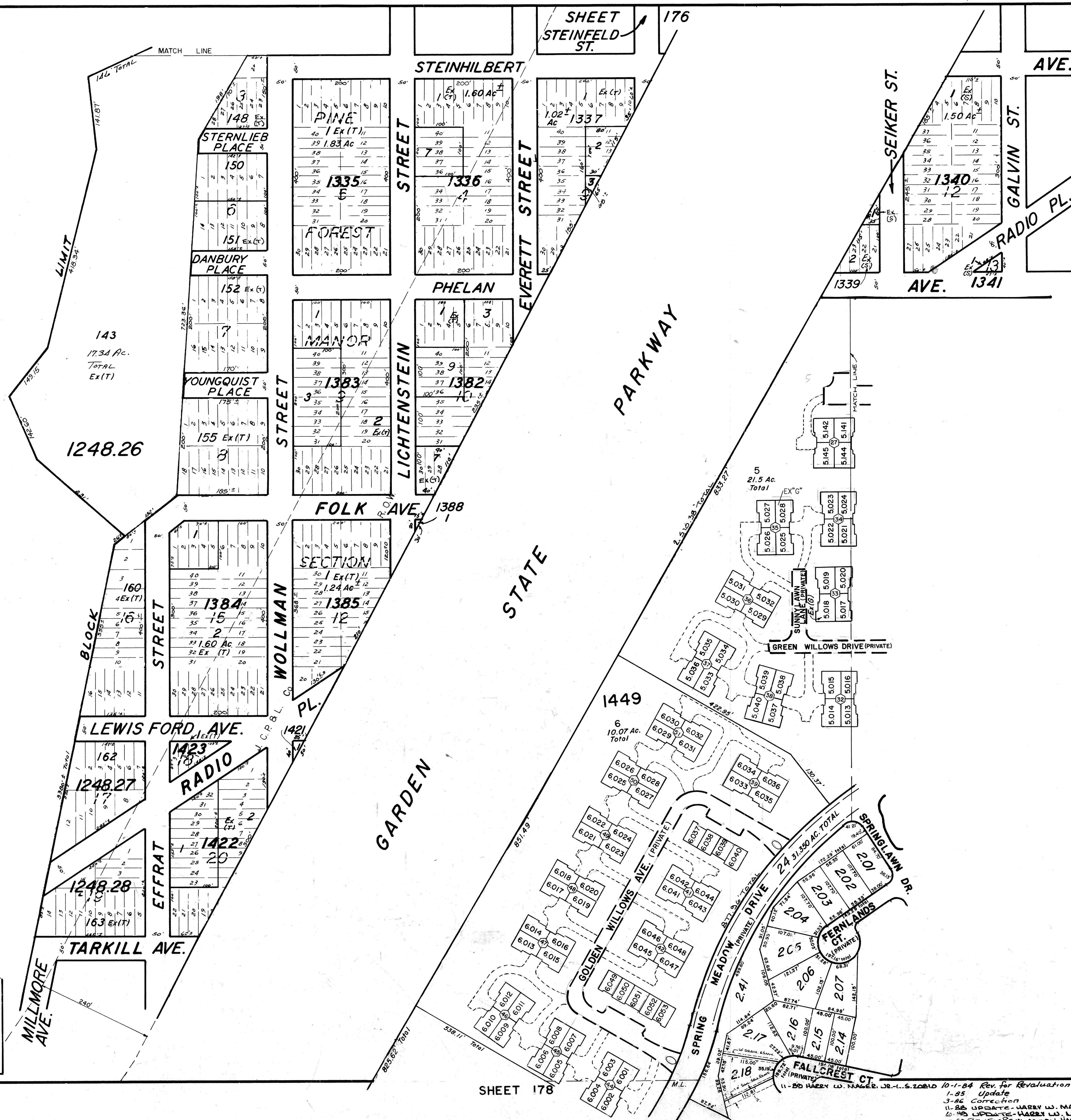
SHEET 173

SHEET 172

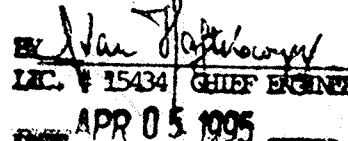
STATE TAX DEPARTMENT
Approved as a Tax Map According to the
Provisions of Chapter 175, Laws of 1913

J. H. THAYER MARTIN
State Tax Commissioner

By: 
Date: Nov. 22, 1940. Serial No. 87.



NEW JERSEY DEPARTMENT OF THE TREASURY
DIVISION OF TAXATION
LOCAL PROPERTY BRANCH
APPROVED AS A TAX MAP PURSUANT TO THE
PROVISIONS OF CHAPTER 175, LAWS OF 1913, ETC.
FOR THE DIRECTOR, DIVISION OF TAXATION

By:  P.E. & L.S.
LIC. # 15434 CHIEF ENGINEERING SECTION
DATE: APR 05 1995 SERIAL NO. 769

TAX MAP
LAKEWOOD TOWNSHIP
OCEAN COUNTY, N.J.
SCALE: 1"=100'
1939
GEORGE B. WADDILL
LICENSED ENGINEER & SURVEYOR
LAKEWOOD, N.J.
REVISED 11/54 BY Bruce M. Larabee

6/17/68 Robert S. Powers
11/68
7/73 Daniel A. DeSessa
9/74
11-85 UPDATE - HARRY W. MAGER, JR. - L.S.
12-90 UPDATE - HARRY W. MAGER, JR. - L.S.
12-95 UPDATE - HARRY W. MAGER, JR. - L.S.
12-95 UPDATE - HARRY W. MAGER, JR. - L.S.

SHEET 178