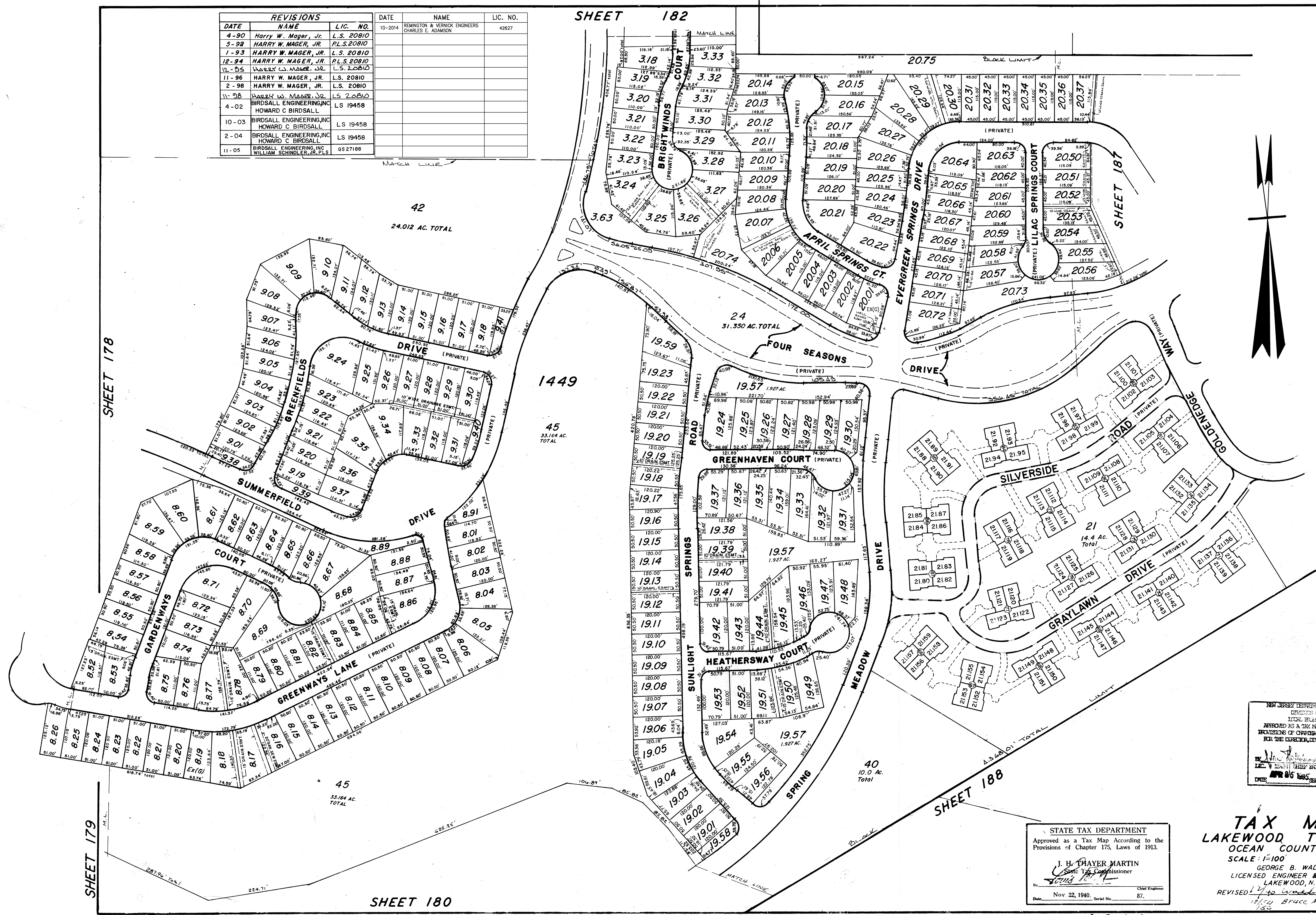


REVISIONS			DATE	NAME	LIC. NO.
4-90	HARRY W. MAGER, JR.	L.S. 20810	10-2014	REMINGTON & VERNICK ENGINEERS CHARLES E. ADAMSON	42627
5-92	HARRY W. MAGER, JR.	L.S. 20810			
7-93	HARRY W. MAGER, JR.	L.S. 20810			
12-94	HARRY W. MAGER, JR.	L.S. 20810			
12-95	HARRY W. MAGER, JR.	L.S. 20810			
11-96	HARRY W. MAGER, JR.	L.S. 20810			
2-98	HARRY W. MAGER, JR.	L.S. 20810			
11-98	HARRY W. MAGER, JR.	L.S. 20810			
4-02	BIRDSALL ENGINEERING, INC. HOWARD C. BIRDSALL	L.S. 19458			
10-03	BIRDSALL ENGINEERING, INC. HOWARD C. BIRDSALL	L.S. 19458			
2-04	BIRDSALL ENGINEERING, INC. HOWARD C. BIRDSALL	L.S. 19458			
11-05	BIRDSALL ENGINEERING, INC. WILLIAM SCHINDLER, JR., P.L.S.	GS 27188			

SHEET 182



NEW JERSEY DEPARTMENT OF THE TREASURY
DIVISION OF TAXATION
LOCAL EXAMINER
APPROVED AS A TAX MAP PURSUANT TO THE
PROVISIONS OF CHAPTER 175, LAWS OF 1913, ETC.
FOR THE DIRECTOR, DIVISION OF TAXATION

J. H. THAYER MARTIN
L.S. 12541 CHIEF ENGINEERING SECTION
DATE APR 05 1995 SERIAL NO. 769

STATE TAX DEPARTMENT
Approved as a Tax Map According to the
Provisions of Chapter 175, Laws of 1913.

J. H. THAYER MARTIN
L.S. 12541
Nov. 22, 1940. Serial No. 87.

TAX MAP
LAKEWOOD TOWNSHIP
OCEAN COUNTY, N. J.
SCALE: 1"=100'
1939
GEORGE B. WADDILL
LICENSED ENGINEER & SURVEYOR
LAKEWOOD, N. J.
REVISED 12-10-1994
12-10-1994 Bruce M. Larrabee