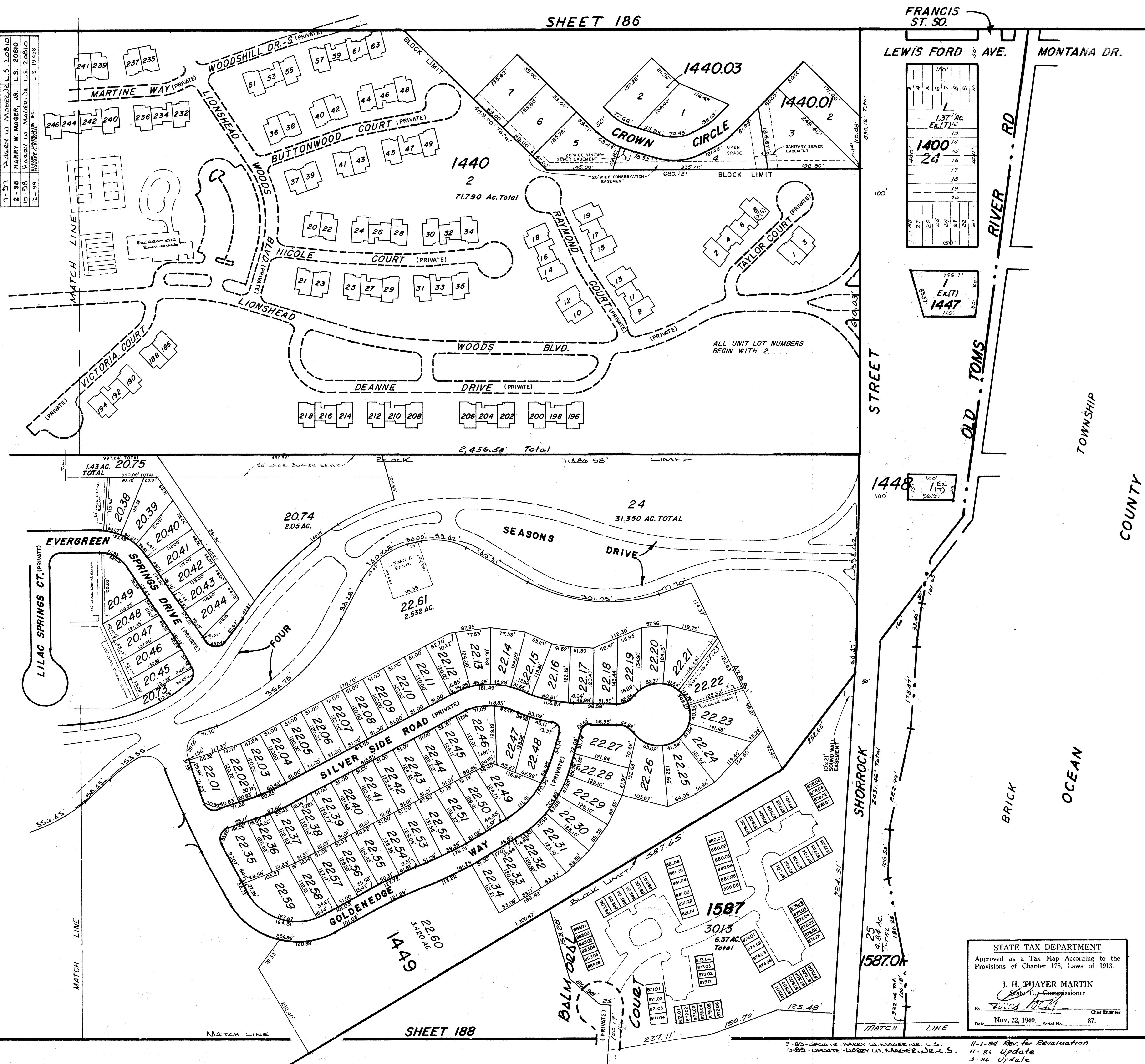


REVISIONS		
DATE	NAME	LIC. NO.
4-90	HARRY W. MAGER, JR.	L.S. 20810
6-90	HARRY W. MAGER, JR.	L.S. 20810
9-90	HARRY W. MAGER, JR.	L.S. 20810
5-92	HARRY W. MAGER, JR.	L.S. 20810
7-93	HARRY W. MAGER, JR.	L.S. 20810
12-95	HARRY W. MAGER, JR.	L.S. 20810
1-97	HARRY W. MAGER, JR.	L.S. 20810
2-98	HARRY W. MAGER, JR.	L.S. 20810
10-05	HARRY W. MAGER, JR.	L.S. 20810
12-99	HARRY W. MAGER, JR.	L.S. 19458



REVISIONS		
DATE	NAME	LIC. NO.
10-00	BIRDSALL ENGINEERING, INC. HOWARD C. BIRDSALL	L.S. 19458
6-02	BIRDSALL ENGINEERING, INC. HOWARD C. BIRDSALL	L.S. 19458
12-03	BIRDSALL ENGINEERING, INC. HOWARD C. BIRDSALL	L.S. 19458
1-04	BIRDSALL ENGINEERING, INC. HOWARD C. BIRDSALL	L.S. 19458
11-05	BIRDSALL ENGINEERING, INC. WILLIAM SCHINDLER, PLS	GS27188
10-07	BIRDSALL ENGINEERING, INC. HOWARD C. BIRDSALL, PLS	GS19458
11-2012	REMINGTON & VERNICK ENGINEERS CRAIG F. REMINGTON	23924
3-2013	REMINGTON & VERNICK ENGINEERS CRAIG F. REMINGTON	23924
7-2014	REMINGTON & VERNICK ENGINEERS CHARLES E. ADAMSON	42627

NEW JERSEY DEPARTMENT OF TREASURY  
DIVISION OF TAXATION  
LOCAL REVENUE BRANCH  
APPROVED AS A TAX MAP PURSUANT TO THE  
PROVISIONS OF CHAPTER 175, LAWS OF 1913, ETC.  
FOR THE DIRECTOR, DIVISION OF TAXATION  
  
P.E. & L.S.  
RECORDING SECTION  
DATE APR 05 1995 SERIAL NO. 769

STATE TAX DEPARTMENT  
Approved as a Tax Map According to the  
Provisions of Chapter 175, Laws of 1913.  
  
J. H. PHAYER MARTIN  
State Tax Commissioner  
  
Nov. 22, 1940. Serial No. 87.

TAX MAP  
LAKEWOOD TOWNSHIP  
OCEAN COUNTY, N. J.  
SCALE: 1"=100' 1939  
GEORGE B. WADDILL  
LICENSED ENGINEER & SURVEYOR  
LAKEWOOD, N. J.  
REVISED 12/15/54 Bruce M. Larrabee  
1/56

2-85 UPDATE - HARRY W. MAGER, JR. - L.S.  
10-85 UPDATE - HARRY W. MAGER, JR. - L.S.  
11-84 Rev. for Revaluation  
11-85 Update  
3-86 Update  
7-88 UPDATE - HARRY W. MAGER, JR. - L.S.

7/73 Daniel A. DeSessa  
8/74 " " "  
3/75 " " "  
6/78 " " "