

REVISIONS		
DATE	NAME	LIC. NO.
4-90	Harry W. Mager, Jr.	L.S. 20810
5-92	HARRY W. MAGER, JR.	P.L.S. 20810
1-93	HARRY W. MAGER, JR.	L.S. 20810
2-98	HARRY W. MAGER, JR.	L.S. 20810
6-02	BIRDSALL ENGINEERING, INC. HOWARD C. BIRDSALL	LS 19458
1-04	BIRDSALL ENGINEERING, INC. HOWARD C. BIRDSALL	LS 19458
11-05	BIRDSALL ENGINEERING, INC. WILLIAM SCHINDLER, JR., PLS	GS 27188
11-06	BIRDSALL ENGINEERING, INC. HOWARD C. BIRDSALL, PLS	GS 19458
12-07	BIRDSALL ENGINEERING, INC. HOWARD C. BIRDSALL, PLS	GS 19458
10-08	BIRDSALL ENGINEERING, INC. JOHN A. HINCK, PLS	GS 35846
5-2010	REMINGTON & VERNICK ENGINEERS CRAIG F. REMINGTON	23924
11-2013	REMINGTON & VERNICK ENGINEERS CRAIG F. REMINGTON	23924
12-2014	REMINGTON & VERNICK ENGINEERS CHARLES E. ADAMSON	42627

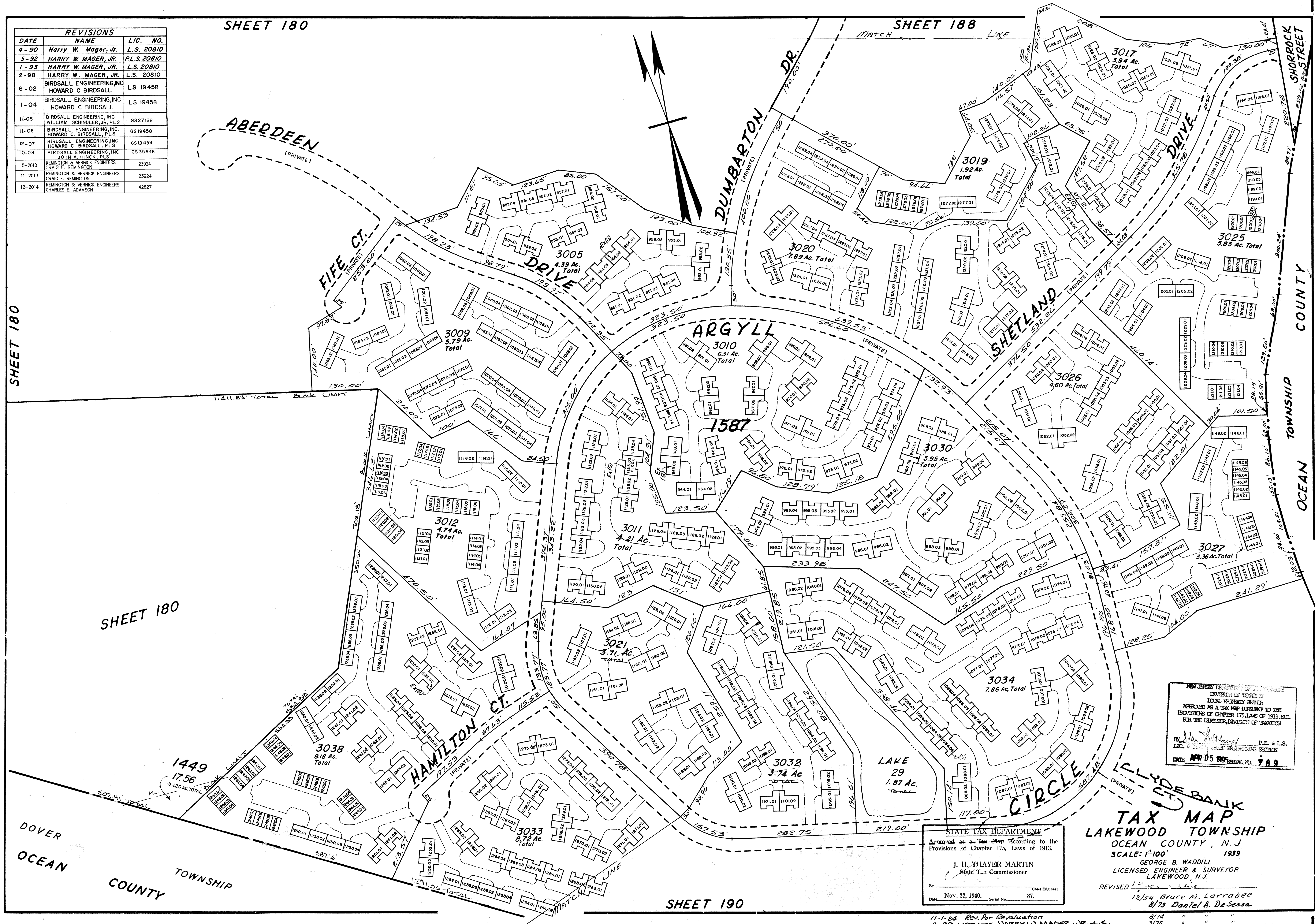
SHEET 180

SHEET 180

SHEET 188

SHEET 180

DOVER  
OCEAN  
COUNTY



NEW JERSEY DEPARTMENT OF TREASURY  
DIVISION OF TAXATION  
LOCAL PROPERTY TAX  
APPROVED AS A TAX MAP PURSUANT TO THE  
PROVISIONS OF CHAPTER 175, LAWS OF 1913, ETC.  
FOR THE DIRECTOR, DIVISION OF TAXATION  
BY: [Signature] P.E. & L.S.  
DATE: APR 05 2014 PERMIT NO. 968

STATE TAX DEPARTMENT  
Approved as a Tax Map According to the  
Provisions of Chapter 175, Laws of 1913.  
J. H. THAYER MARTIN  
State Tax Commissioner  
By: [Signature] Chief Engineer  
Date: Nov. 22, 1940. Serial No. 87.

TAX MAP  
LAKEWOOD TOWNSHIP  
OCEAN COUNTY, N.J.  
SCALE: 1"=100'  
1939  
GEORGE B. WADDILL  
LICENSED ENGINEER & SURVEYOR  
LAKEWOOD, N.J.  
REVISED 12/54 Bruce M. Larrabee  
8/78 Daniel A. DeSessa

11-1-84 Rev. for Revaluation  
3-8-85 UPDATE WADSWORTH W. MAGER, JR. - L.S.  
7-8-85 REV. FOR REVALUATION - HARRY W. MAGER, JR. - L.S.