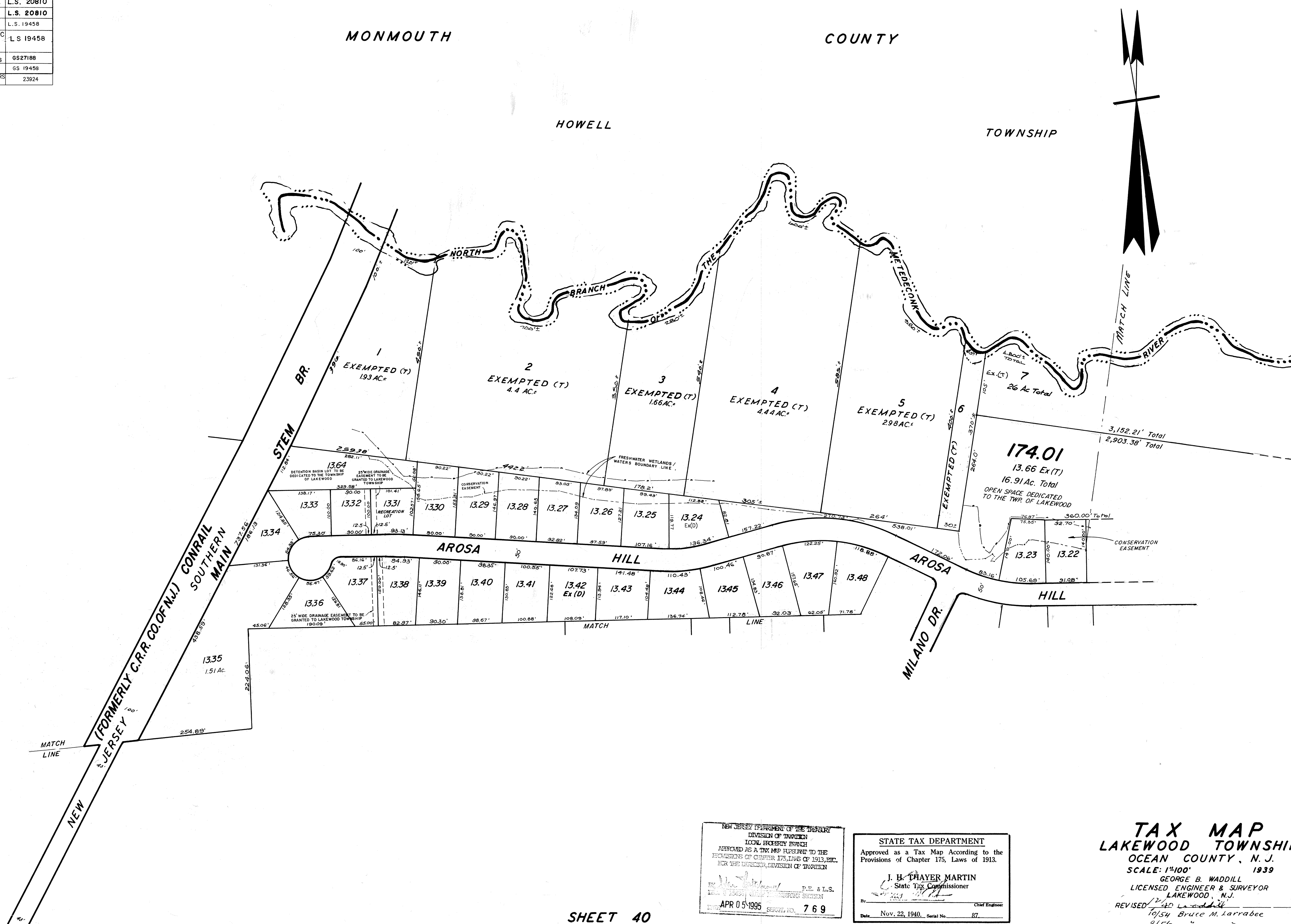


REVISIONS		
DATE	NAME	LIC. NO.
7-90	HARRY W. MAGER, JR.	L.S. 20810
4-92	HARRY W. MAGER, JR.	P.L.S. 20810
12-92	HARRY W. MAGER, JR.	L.S. 20810
1-95	HARRY W. MAGER, JR.	L.S. 20810
6-99	BIRDSALL ENGINEERING INC. HOWARD C. BIRDSALL	L.S. 19458
5-03	BIRDSALL ENGINEERING INC. HOWARD C. BIRDSALL	L.S. 19458
6-05	BIRDSALL ENGINEERING INC. WILLIAM SCHINDLER, JR., PLS	GS27188
11-06	BIRDSALL ENGINEERING INC. HOWARD C. BIRDSALL, PLS	GS 19458
5-2010	REMINGTON & VERNICK ENGINEERS CRAIG F. REMINGTON	23924

SHEET 38

SHEET 42

SHEET 41



SHEET 40

NEW JERSEY DEPARTMENT OF THE TREASURY
DIVISION OF TAXATION
LOCAL PROPERTY TAX
APPROVED AS A TAX MAP PURSUANT TO THE
PROVISIONS OF CHAPTER 175, LAWS OF 1913, ETC.
FOR THE DIRECTOR, DIVISION OF TAXATION
APR 05 1995
P.E. & L.S.
7 6 9

STATE TAX DEPARTMENT
Approved as a Tax Map According to the
Provisions of Chapter 175, Laws of 1913.
J. H. THAYER MARTIN
State Tax Commissioner
Nov. 22, 1940
Chief Engineer

TAX MAP
LAKEWOOD TOWNSHIP
OCEAN COUNTY, N. J.
SCALE: 1"=100'
1939
GEORGE B. WADDILL
LICENSED ENGINEER & SURVEYOR
LAKEWOOD, N.J.
REVISED 12/40
10/54 Bruce M. Larrabee
9/56

4-1-84 Rev. for Revaluation - Daniel A. DeSessa, P.E. L.S.
10-22-84 Rev. for Revaluation - HARRY W. MAGER, JR. L.S.

12/87 Robert B. Powers
7/73 Daniel A. DeSessa