

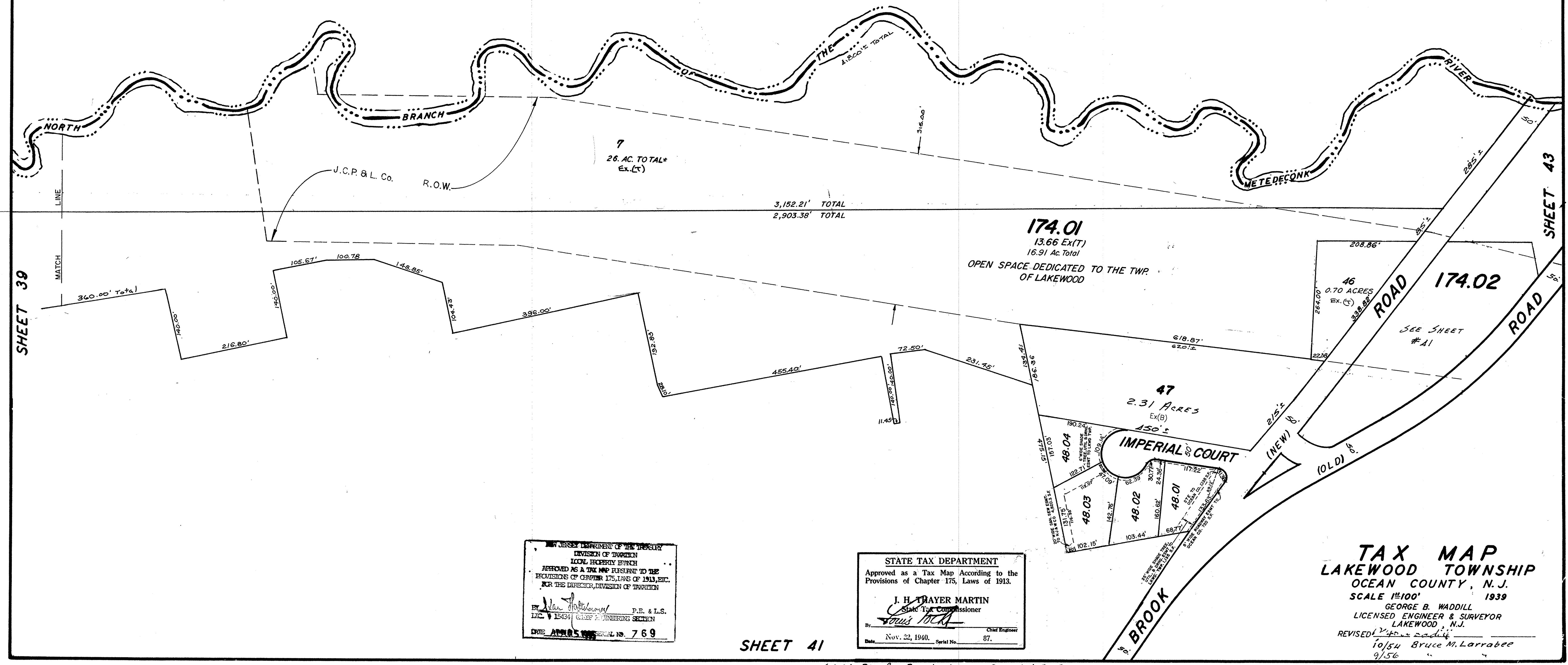
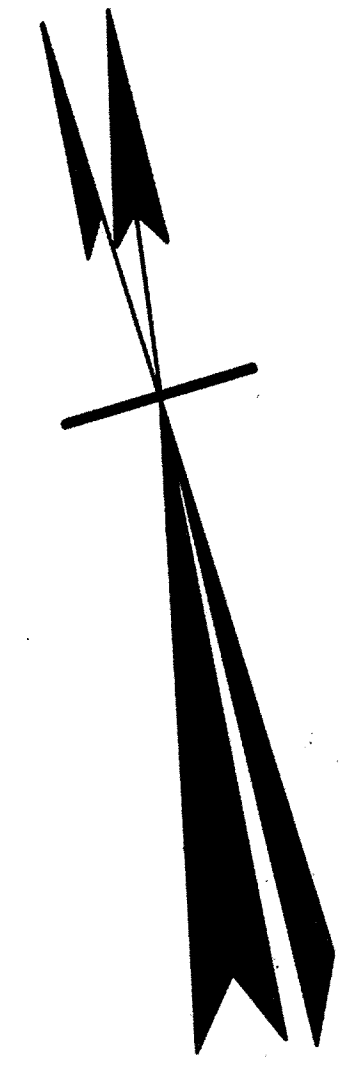
REVISIONS		
DATE	NAME	LIC. NO.
7-90	HARRY W. MAGER, JR.	L.S. 20810
4-92	HARRY W. MAGER, JR.	P.L.S. 20810
7-99	BIRDALL ENGINEERING INC. HOWARD C. BIRDALL	L.S. 19458
2-04	BIRDALL ENGINEERING INC. HOWARD C. BIRDALL	L.S. 19458
10-05	BIRDALL ENGINEERING INC. WILLIAM SCHINDLER, JR. PLS	6827188
5-2010	REMINGTON & VERNICK ENGINEERS CRAIG F. REMINGTON	23924
4-2013	REMINGTON & VERNICK ENGINEERS CRAIG F. REMINGTON	23924

MONMOUTH

COUNTY

HOWELL

TOWNSHIP



NEW JERSEY DEPARTMENT OF THE TREASURY  
DIVISION OF TAXATION  
LOCAL PROPERTY TAX  
APPROVED AS A TAX MAP PURSUANT TO THE  
PROVISIONS OF CHAPTER 175, LAWS OF 1913, ETC.  
FOR THE DIRECTOR, DIVISION OF TAXATION  
BY *[Signature]* P.E. & L.S.  
LIC. # 15491 CHIEF ENGINEERING SECTION  
DATE APR 05 2005 SERIAL NO. 769

STATE TAX DEPARTMENT  
Approved as a Tax Map According to the  
Provisions of Chapter 175, Laws of 1913.  
J. H. TRAYER MARTIN  
State Tax Commissioner  
By *[Signature]* Chief Engineer  
Date Nov. 22, 1940. Serial No. 87.

TAX MAP  
LAKEWOOD TOWNSHIP  
OCEAN COUNTY, N.J.  
SCALE 1"=100' 1939  
GEORGE B. WADDILL  
LICENSED ENGINEER & SURVEYOR  
LAKEWOOD, N.J.  
REVISED 10/54 Bruce M. Larrabee  
9/56  
8/58  
12/87 Robert B. Powers  
6/73 Daniel A. DeSessa  
10/74

SHEET 41

4-1-84 Rev. for Revaluation ~ Daniel A. DeSessa  
11-88 UPDATE - HARRY W. MAGER, JR. - L.S.  
4-20 REV. FOR REVALUATION - HARRY W. MAGER, JR. - L.S.