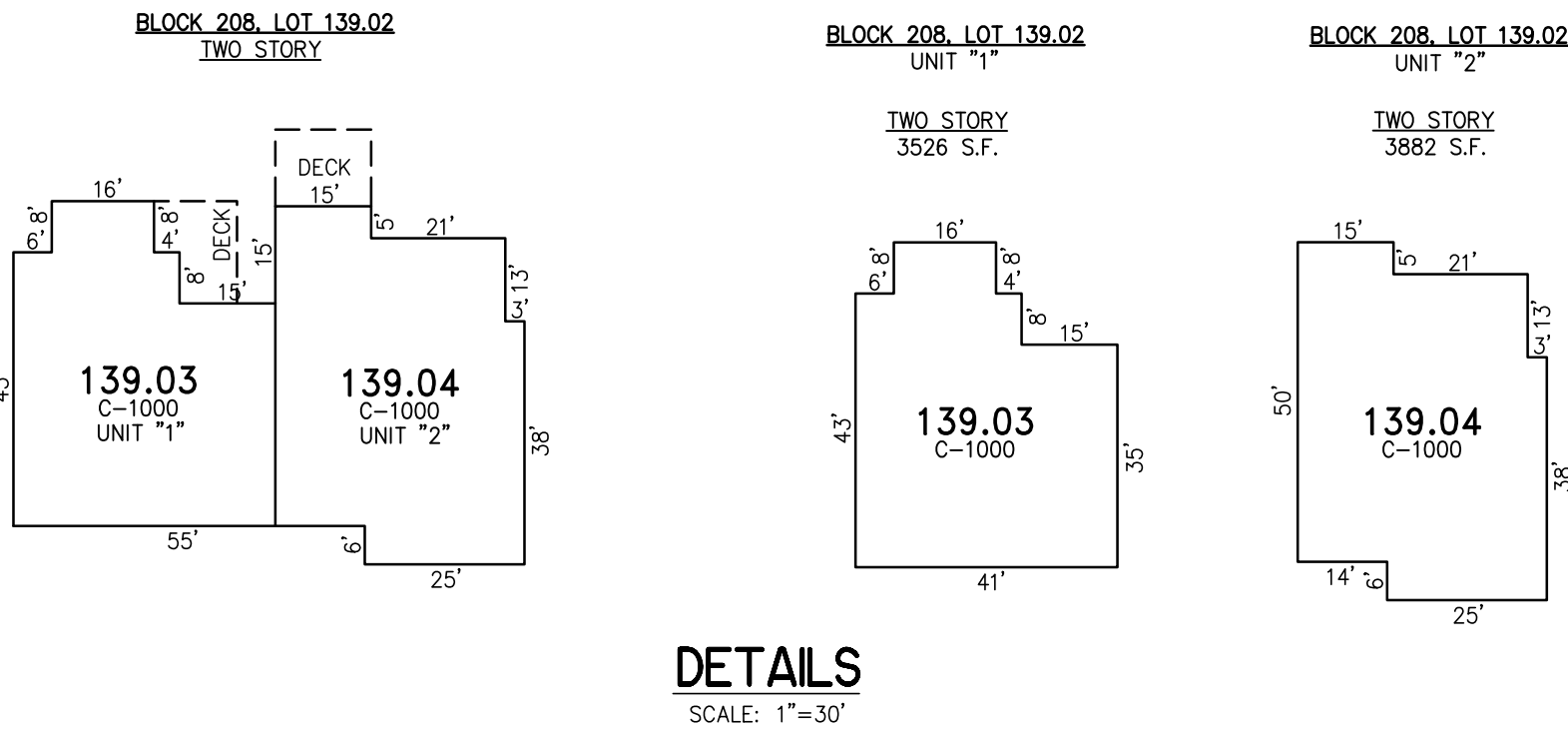
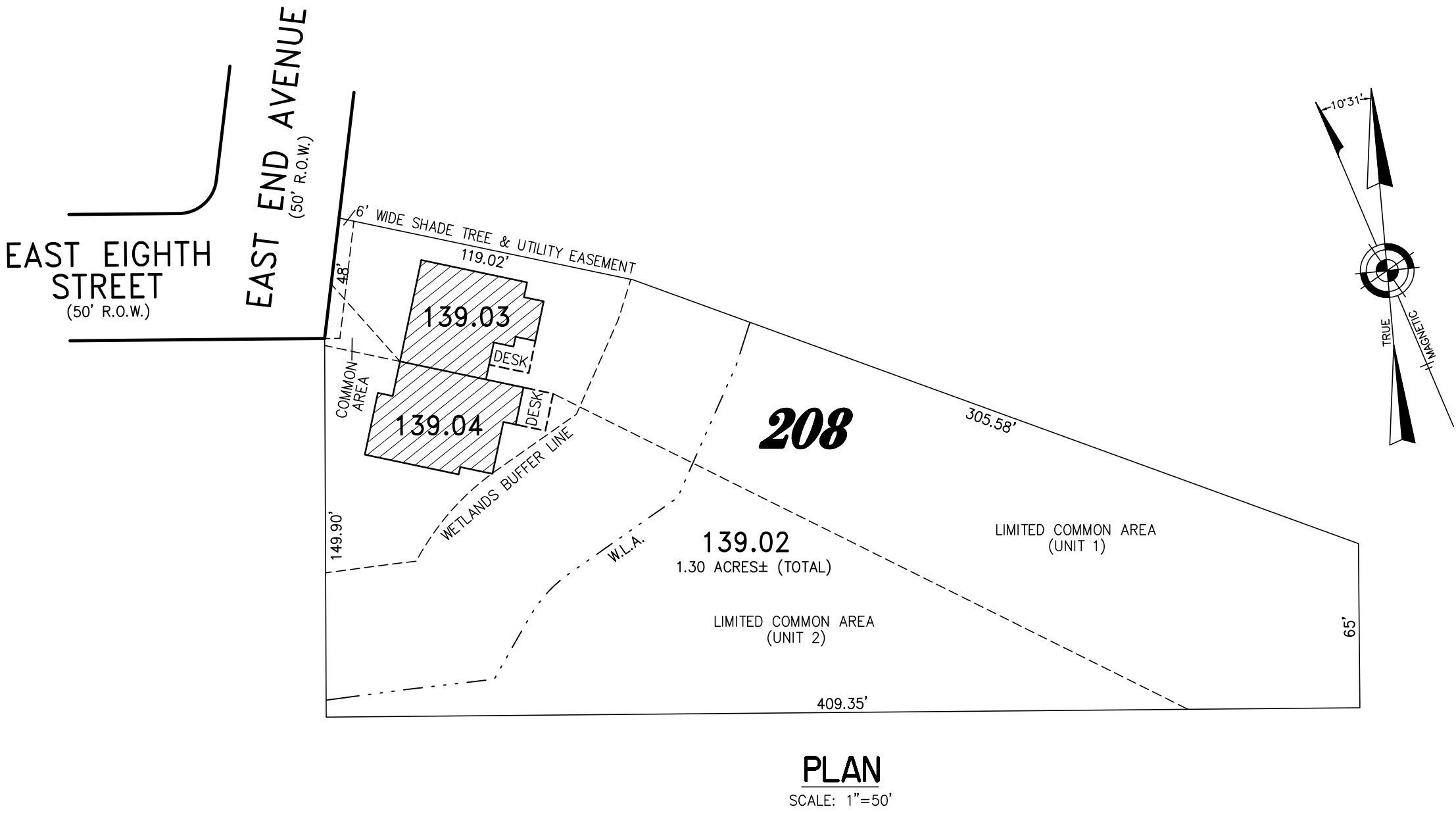
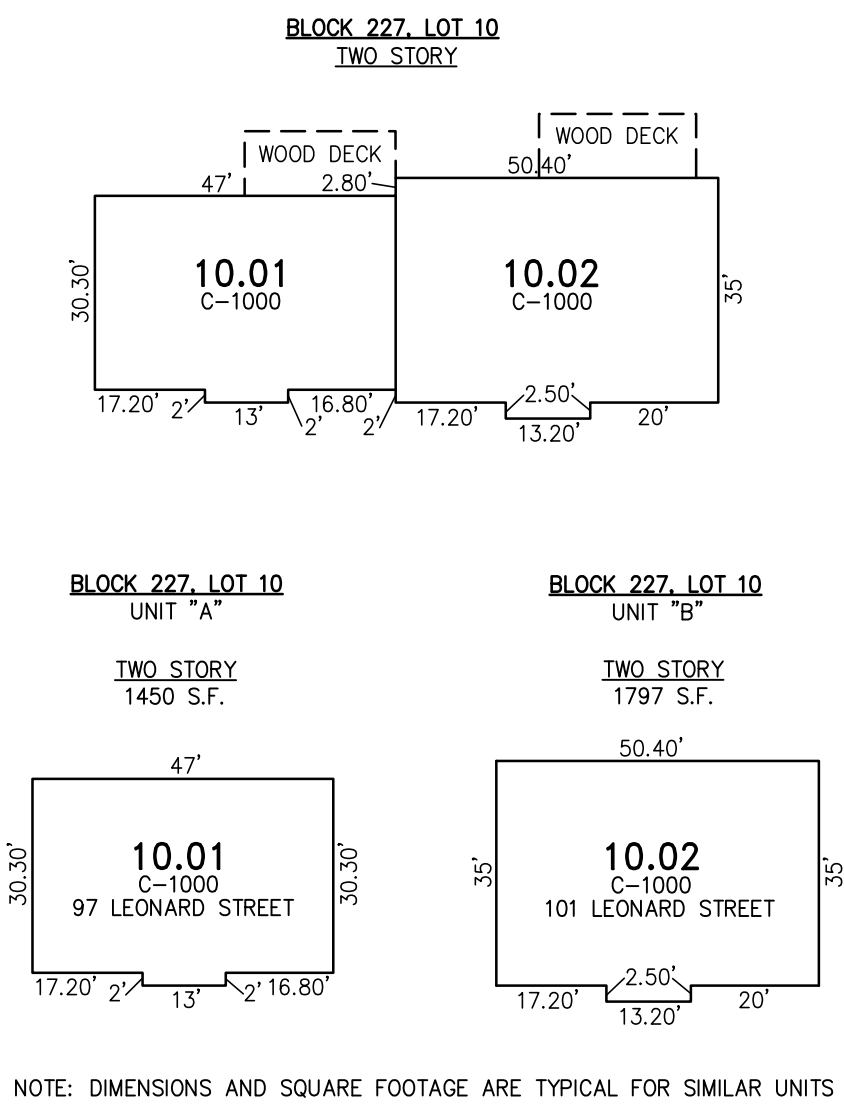
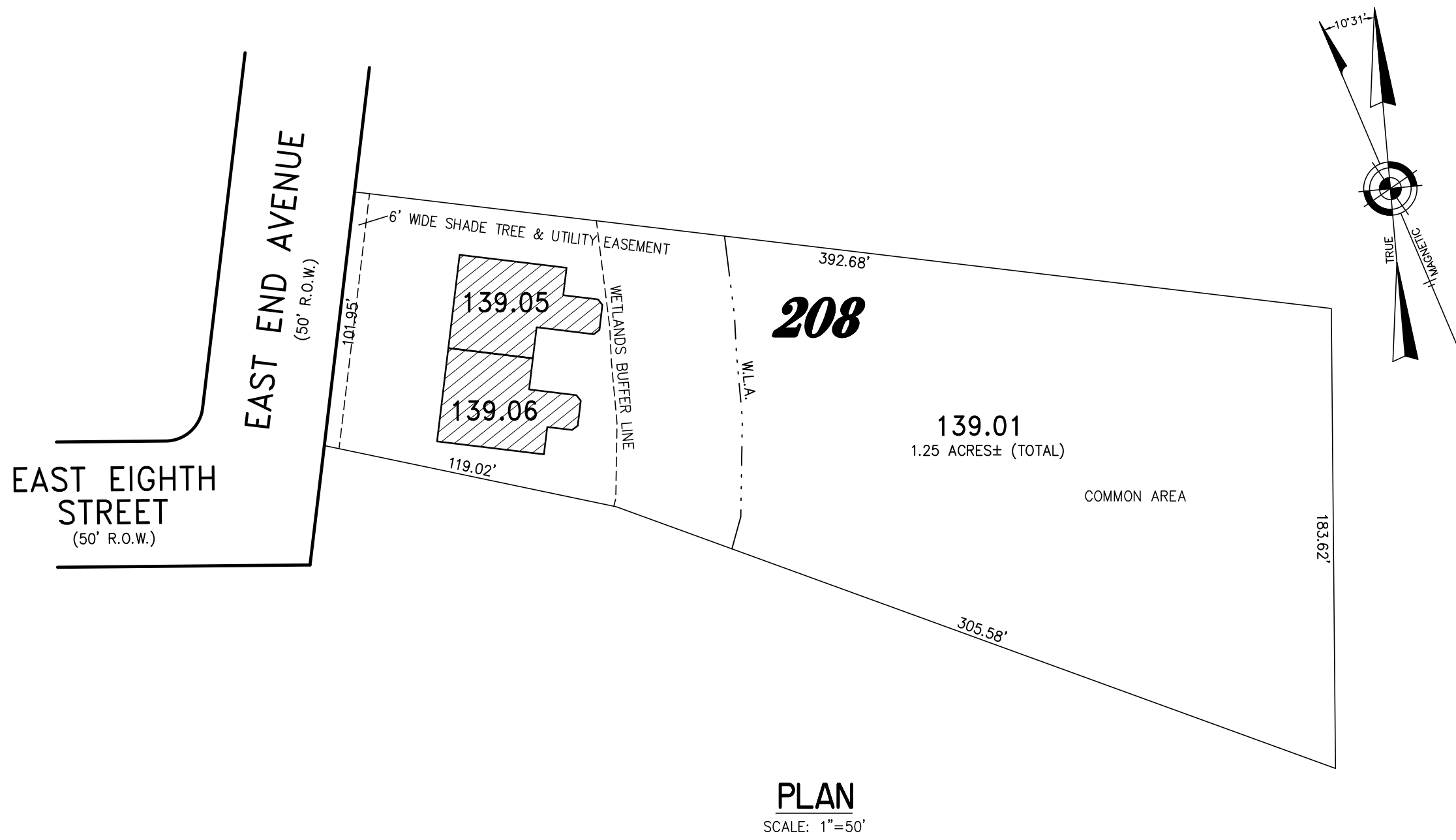


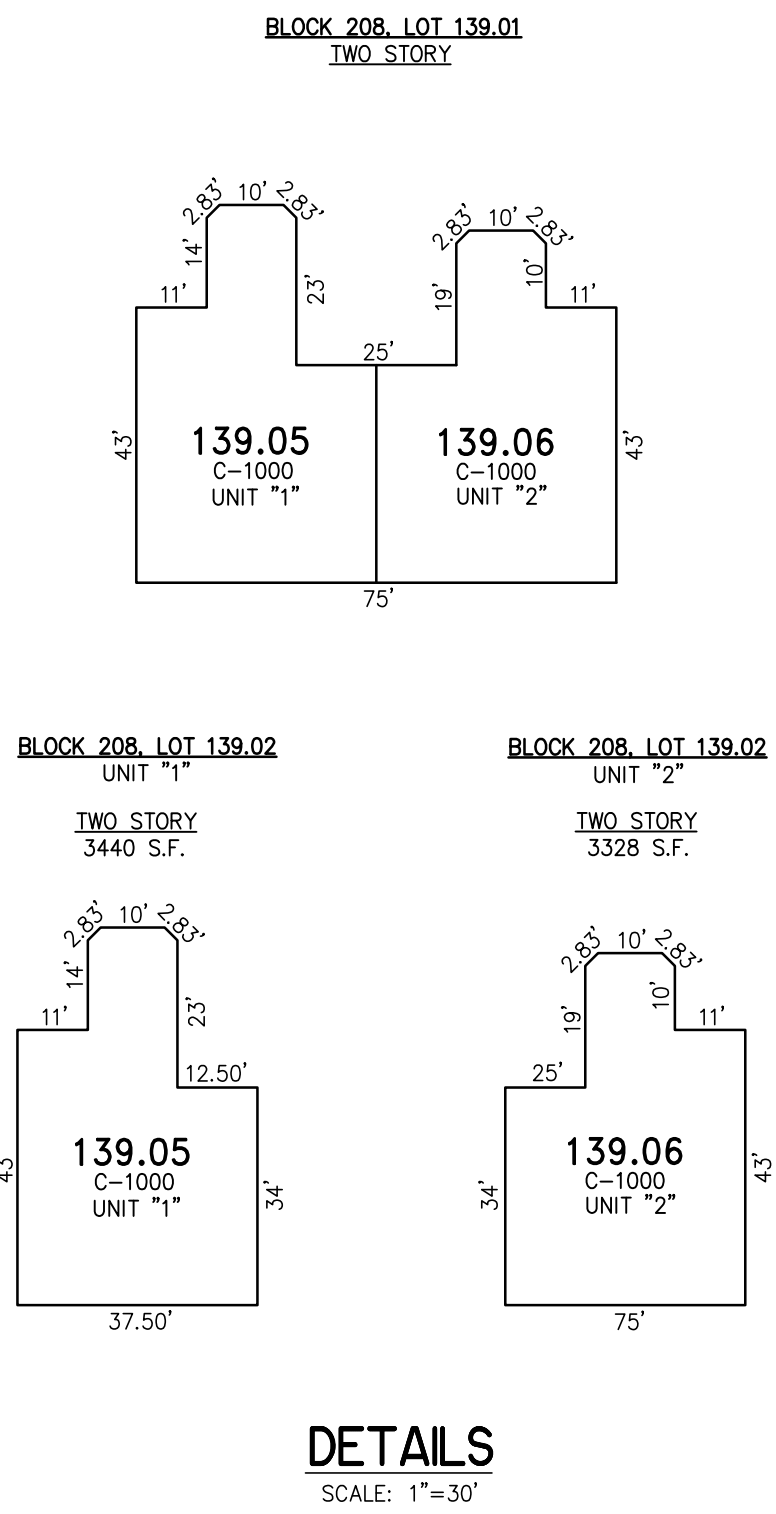
**BLOCK 227, LOT 10**  
**LEONARD COURT CONDOMINIUM**  
**97-101 LEONARD STREET**  
**INSET "A"**



**BLOCK 208, LOT 139.02**  
**799-803 EAST END GARDENS CONDOMINIUM**  
**799-803 EAST END GARDENS**  
**INSET "B"**



**BLOCK 208, LOT 139.01**  
**807-811 EAST END GARDENS CONDOMINIUM**  
**807-811 EAST END GARDENS**  
**INSET "C"**



CONDOMINIUM DETAILS AND DIMENSIONS  
BLOCK 227, LOT 10  
BLOCK 208, LOT 139.01  
BLOCK 208, LOT 139.02  
SEE PLATE 50

**TAX MAP**  
**TOWNSHIP OF LAKEWOOD**

OCEAN COUNTY NEW JERSEY  
SCALE: NOTED DATE: 2-27-2009  
**CRAIG F. REMINGTON LAND SURVEYOR LIC. NO. 23924**



**REMINGTON, VERNICK & VENA ENGINEERS**  
9 ALLEN STREET, TOMS RIVER, N.J. 08753  
(732) 286-9220, FAX (732) 505-8416  
WEB SITE ADDRESS: WWW.RVVE.COM