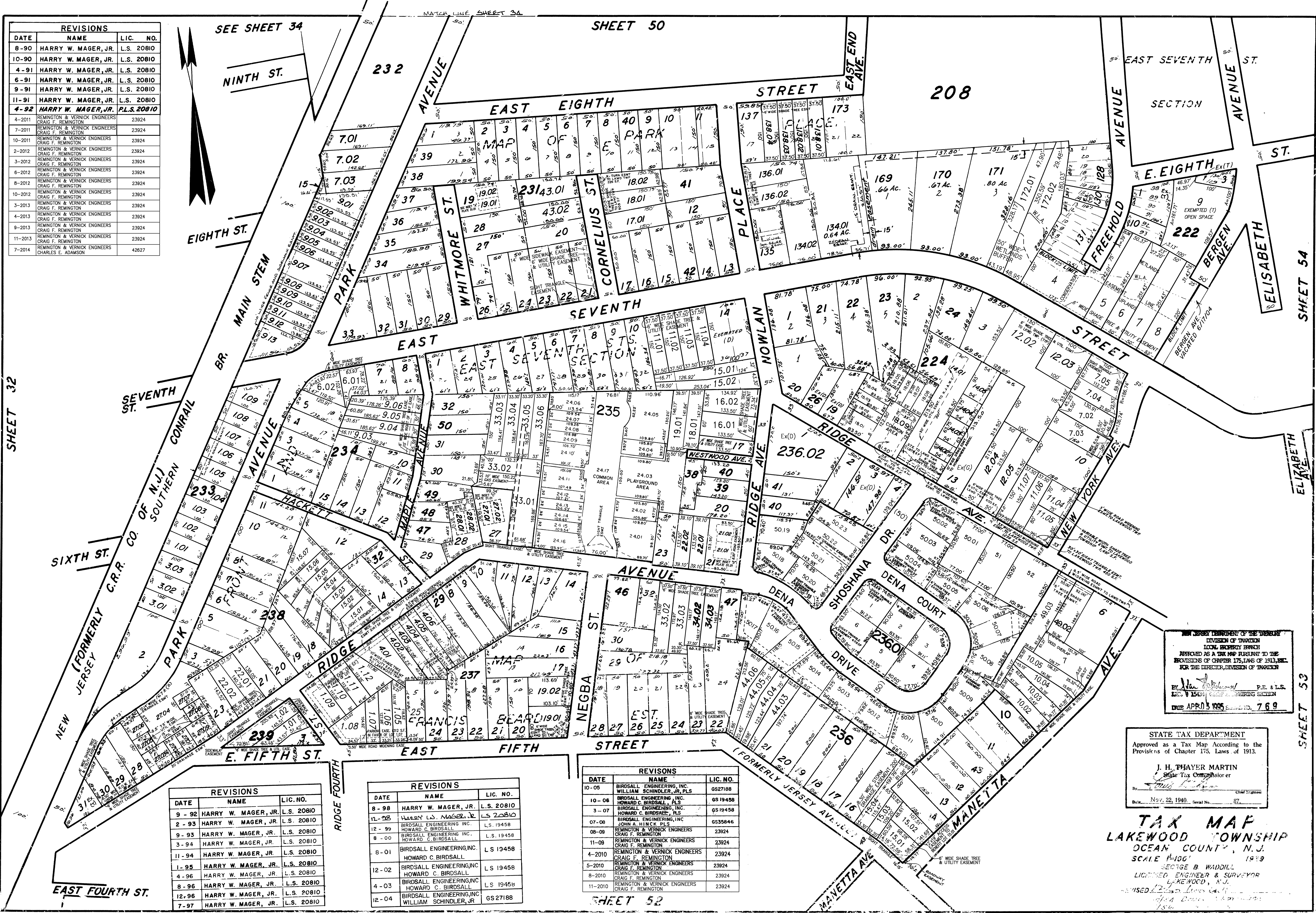


REVISIONS		
DATE	NAME	LIC. NO.
8-90	HARRY W. MAGER, JR.	L.S. 20810
10-90	HARRY W. MAGER, JR.	L.S. 20810
4-91	HARRY W. MAGER, JR.	L.S. 20810
6-91	HARRY W. MAGER, JR.	L.S. 20810
9-91	HARRY W. MAGER, JR.	L.S. 20810
11-91	HARRY W. MAGER, JR.	L.S. 20810
4-92	HARRY W. MAGER, JR.	L.S. 20810
4-2011	REMINGTON & VERNICK ENGINEERS CRAIG F. REMINGTON	23924
7-2011	REMINGTON & VERNICK ENGINEERS CRAIG F. REMINGTON	23924
10-2011	REMINGTON & VERNICK ENGINEERS CRAIG F. REMINGTON	23924
2-2012	REMINGTON & VERNICK ENGINEERS CRAIG F. REMINGTON	23924
3-2012	REMINGTON & VERNICK ENGINEERS CRAIG F. REMINGTON	23924
6-2012	REMINGTON & VERNICK ENGINEERS CRAIG F. REMINGTON	23924
8-2012	REMINGTON & VERNICK ENGINEERS CRAIG F. REMINGTON	23924
10-2012	REMINGTON & VERNICK ENGINEERS CRAIG F. REMINGTON	23924
3-2013	REMINGTON & VERNICK ENGINEERS CRAIG F. REMINGTON	23924
4-2013	REMINGTON & VERNICK ENGINEERS CRAIG F. REMINGTON	23924
9-2013	REMINGTON & VERNICK ENGINEERS CRAIG F. REMINGTON	23924
11-2013	REMINGTON & VERNICK ENGINEERS CRAIG F. REMINGTON	23924
7-2014	REMINGTON & VERNICK ENGINEERS CHARLES E. ADAMSON	42627



REVISIONS		
DATE	NAME	LIC. NO.
9-92	HARRY W. MAGER, JR.	L.S. 20810
2-93	HARRY W. MAGER, JR.	L.S. 20810
9-93	HARRY W. MAGER, JR.	L.S. 20810
3-94	HARRY W. MAGER, JR.	L.S. 20810
11-94	HARRY W. MAGER, JR.	L.S. 20810
1-95	HARRY W. MAGER, JR.	L.S. 20810
4-96	HARRY W. MAGER, JR.	L.S. 20810
8-96	HARRY W. MAGER, JR.	L.S. 20810
12-96	HARRY W. MAGER, JR.	L.S. 20810
7-97	HARRY W. MAGER, JR.	L.S. 20810

REVISIONS		
DATE	NAME	LIC. NO.
8-98	HARRY W. MAGER, JR.	L.S. 20810
12-98	HARRY W. MAGER, JR.	L.S. 20810
12-99	BIRDSALL ENGINEERING INC. HOWARD C. BIRDSALL	L.S. 19458
8-00	BIRDSALL ENGINEERING INC. HOWARD C. BIRDSALL	L.S. 19458
8-01	BIRDSALL ENGINEERING INC. HOWARD C. BIRDSALL	L.S. 19458
12-02	BIRDSALL ENGINEERING INC. HOWARD C. BIRDSALL	L.S. 19458
4-03	BIRDSALL ENGINEERING INC. HOWARD C. BIRDSALL	L.S. 19458
12-04	BIRDSALL ENGINEERING INC. WILLIAM SCHINDLER, JR.	GS27188

REVISIONS		
DATE	NAME	LIC. NO.
10-05	BIRDSALL ENGINEERING, INC. WILLIAM SCHINDLER, JR., PLS	GS27188
10-06	BIRDSALL ENGINEERING, INC. HOWARD C. BIRDSALL, PLS	GS19458
3-07	BIRDSALL ENGINEERING, INC. HOWARD C. BIRDSALL, PLS	GS19458
07-08	BIRDSALL ENGINEERING, INC. JOHN A. HINCK, PLS	GS35846
08-09	REMINGTON & VERNICK ENGINEERS CRAIG F. REMINGTON	23924
11-09	REMINGTON & VERNICK ENGINEERS CRAIG F. REMINGTON	23924
4-2010	REMINGTON & VERNICK ENGINEERS CRAIG F. REMINGTON	23924
5-2010	REMINGTON & VERNICK ENGINEERS CRAIG F. REMINGTON	23924
8-2010	REMINGTON & VERNICK ENGINEERS CRAIG F. REMINGTON	23924
11-2010	REMINGTON & VERNICK ENGINEERS CRAIG F. REMINGTON	23924

NEW JERSEY DEPARTMENT OF THE TREASURY  
DIVISION OF TAXATION  
LOCAL PROPERTY TAX MAP  
APPROVED AS A TAX MAP PURSUANT TO THE  
PROVISIONS OF CHAPTER 175, LAWS OF 1913, ETC.  
FOR THE DIRECTOR, DIVISION OF TAXATION  
By *[Signature]* P.E. & L.S.  
DATE APR 3 1995 Series ID: 769

STATE TAX DEPARTMENT  
Approved as a Tax Map According to the  
Provisions of Chapter 175, Laws of 1913.  
J. H. THAYER MARTIN  
State Tax Commissioner  
By *[Signature]* Chief Surveyor  
Date Nov. 22, 1940. Serial No. 87.

**TAX MAP**  
**LAKEWOOD TOWNSHIP**  
**OCEAN COUNTY, N.J.**  
SCALE 1"=100'  
1989  
GEORGE B. WADDILL  
LICENSED ENGINEER & SURVEYOR  
LAKEWOOD, N.J.  
REVISED 12-20-2000