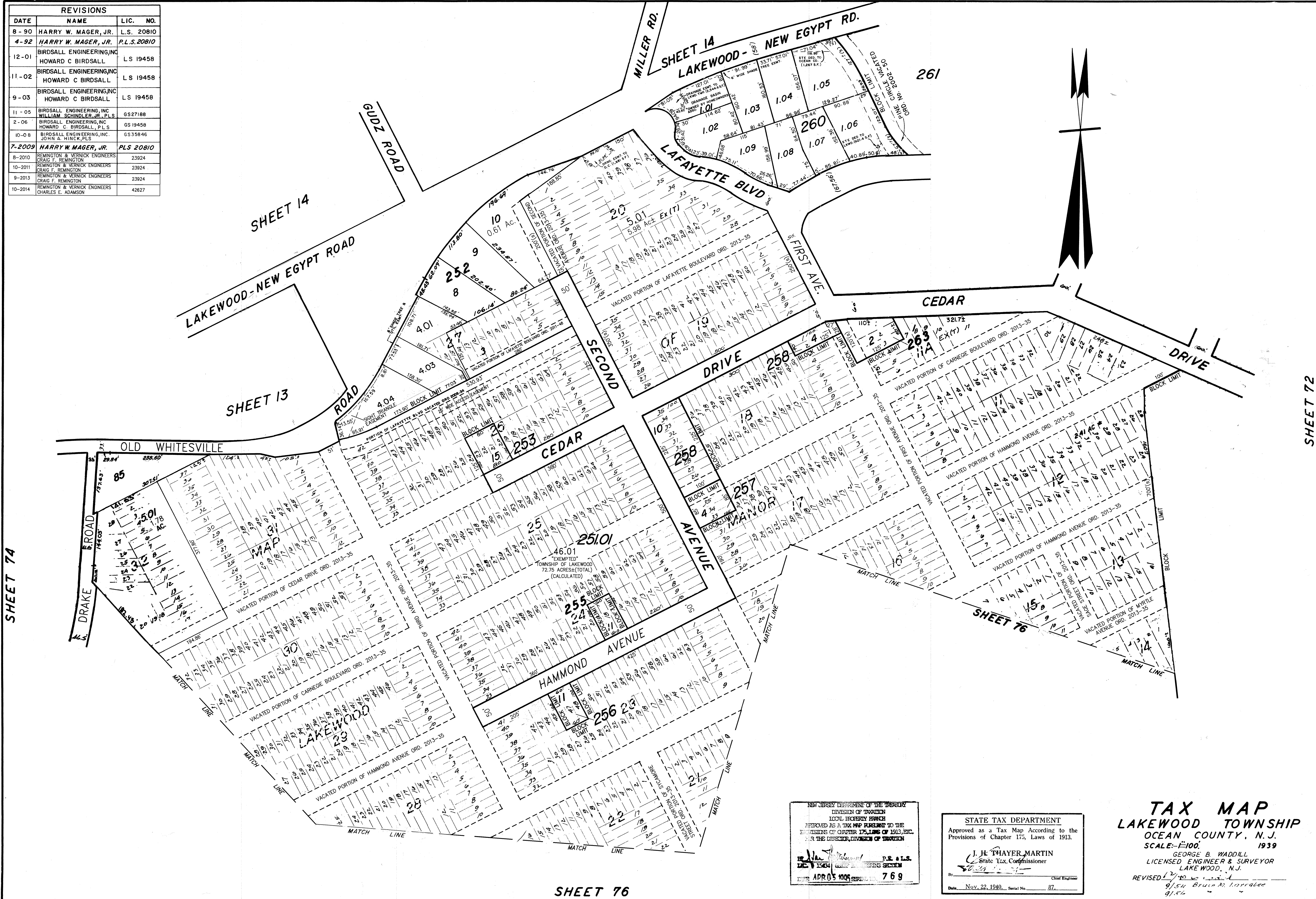


REVISIONS			
DATE	NAME	LIC.	NO.
8-90	HARRY W. MAGER, JR.	L.S.	20810
4-92	HARRY W. MAGER, JR.	P.L.S.	20810
12-01	BIRDSALL ENGINEERING, INC. HOWARD C BIRDSALL	L.S.	19458
11-02	BIRDSALL ENGINEERING, INC. HOWARD C BIRDSALL	L.S.	19458
9-03	BIRDSALL ENGINEERING, INC. HOWARD C BIRDSALL	L.S.	19458
11-05	BIRDSALL ENGINEERING, INC. WILLIAM SCHINDLER, JR., P.L.S.	GS	27188
2-06	BIRDSALL ENGINEERING, INC. HOWARD C. BIRDSALL, P.L.S.	GS	19458
10-08	BIRDSALL ENGINEERING, INC. JOHN A. HINCK, P.L.S.	GS	35846
7-2009	HARRY W. MAGER, JR.	PLS	20810
8-2010	REMINGTON & VERNICK ENGINEERS CRAIG F. REMINGTON		23924
10-2011	REMINGTON & VERNICK ENGINEERS CRAIG F. REMINGTON		23924
9-2013	REMINGTON & VERNICK ENGINEERS CRAIG F. REMINGTON		23924
10-2014	REMINGTON & VERNICK ENGINEERS CHARLES E. ADAMSON		42627



NEW JERSEY DEPARTMENT OF THE TREASURY
DIVISION OF TAXATION
LOCAL PROPERTY TAX
APPROVED AS A TAX MAP SUBJECT TO THE
REVISIONS OF CHAPTER 175, LAWS OF 1913, ETC.
FOR THE DIRECTOR, DIVISION OF TAXATION
[Signature] P.E. & L.S.
DEC 1 1934
APR 05 1935
769

STATE TAX DEPARTMENT
Approved as a Tax Map According to the
Provisions of Chapter 175, Laws of 1913.
J. H. THAYER-MARTIN
State Tax Commissioner
By *[Signature]* Chief Engineer
Date Nov. 22, 1940. Serial No. 87.

TAX MAP
LAKEWOOD TOWNSHIP
OCEAN COUNTY, N.J.
SCALE: 1"=100' 1939
GEORGE B. WADDILL
LICENSED ENGINEER & SURVEYOR
LAKEWOOD, N.J.
REVISED 12/10/11
9/54 Bruce M. Lorrabee
9/54

5-1-84 Rev. for Revaluation - Daniel A. DeSessa P.E. & L.S.
10-85 Update
9-88 Update - HARRY W. MAGER, JR. - L.S.
6-89 Rev. for Equalization - HARRY W. MAGER, JR. - L.S.
11-89 Update - HARRY W. MAGER, JR. - L.S. 20810

10/89 STANLEY D. PETERS
11/74 Daniel A. DeSessa