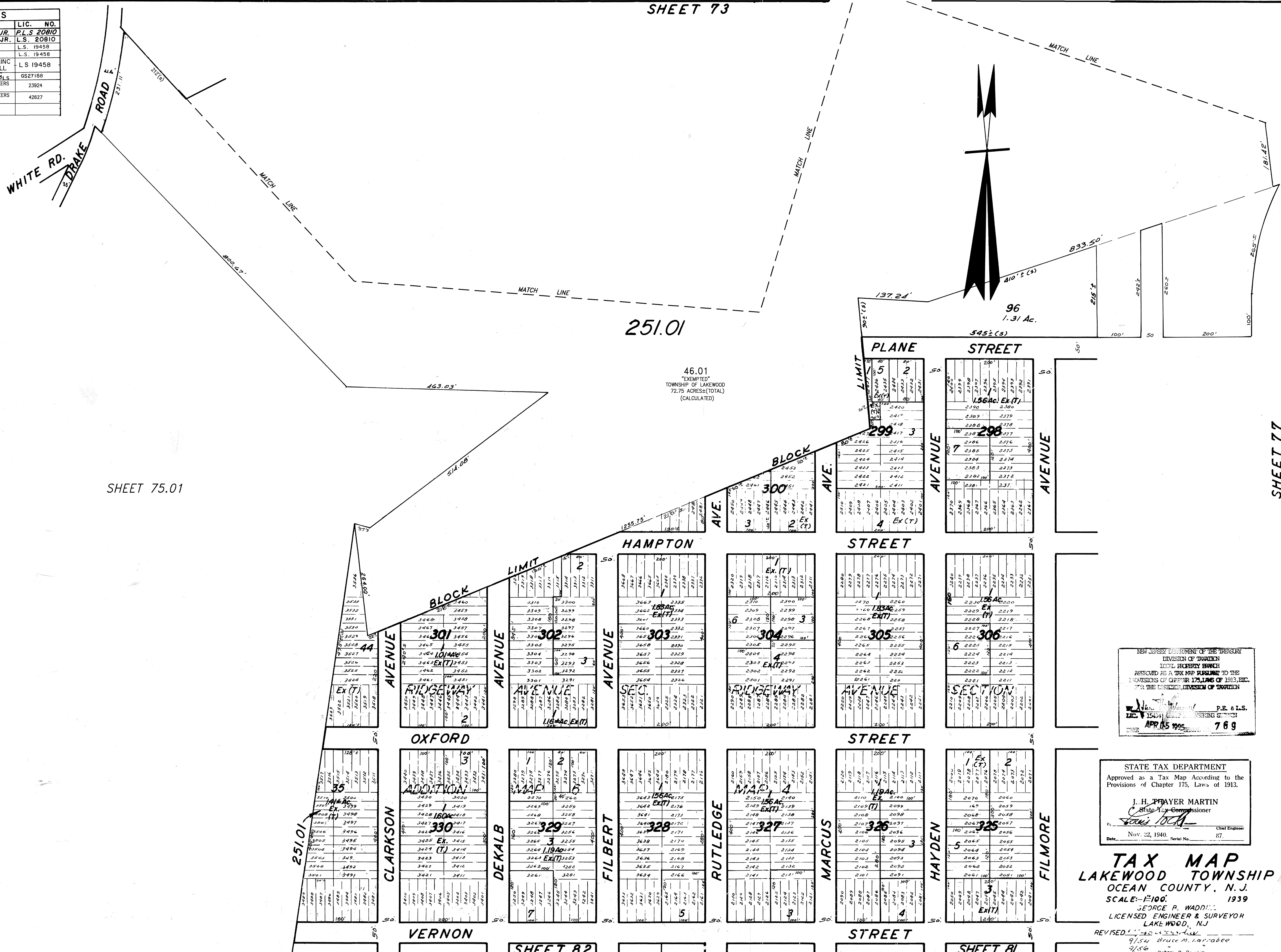


REVISIONS		
DATE	NAME	LIC. NO.
4-92	HARRY W. MAGER, JR.	P.L.S. 20810
12-92	HARRY W. MAGER, JR.	L.S. 20810
12-99	BIRDALL ENGINEERING, INC.	L.S. 19458
5-00	BIRDALL ENGINEERING, INC.	L.S. 19458
12-03	BIRDALL ENGINEERING, INC.	L.S. 19458
10-05	BIRDALL ENGINEERING, INC.	GS27188
9-2013	REMINGTON & VERNICK ENGINEERS CRAIG F. REMINGTON	23924
5-2014	REMINGTON & VERNICK ENGINEERS CHARLES E. ADAMSON	42827

SHEET 73



NEW JERSEY DEPARTMENT OF THE TREASURY
DIVISION OF TAXATION
LOCAL PROPERTY TAX
RECORDED AS A TAX MAP PURSUANT TO THE
PROVISIONS OF CHAPTER 175, LAWS OF 1913, ETC.
FOR THE DEPARTMENT OF TAXATION
APR 05 1995
P.E. & L.S.
769

STATE TAX DEPARTMENT
Approved as a Tax Map According to the
Provisions of Chapter 175, Laws of 1913.
J. H. PRAYER MARTIN
State Tax Commissioner
Nov. 22, 1940. Serial No. 87.

TAX MAP
LAKEWOOD TOWNSHIP
OCEAN COUNTY, N.J.
SCALE: 1"=100'
GEORGE R. WADDILL
LICENSED ENGINEER & SURVEYOR
LAKEWOOD, N.J.

REVISED 11-84 Bruce M. Harrabee
9/56 Robert B. Gault
12/66

6-1-84 Rev. for Revaluation
11-88 UPDATE - HARRY W. MAGER, JR. L.S.
11-88 Rev. for Revaluation - HARRY W. MAGER, JR. L.S.
11-88 UPDATE - HARRY W. MAGER, JR. L.S. 20810

12/67 STANLEY B. PETERS
10/69 Daniel A. DeGessa
11/74