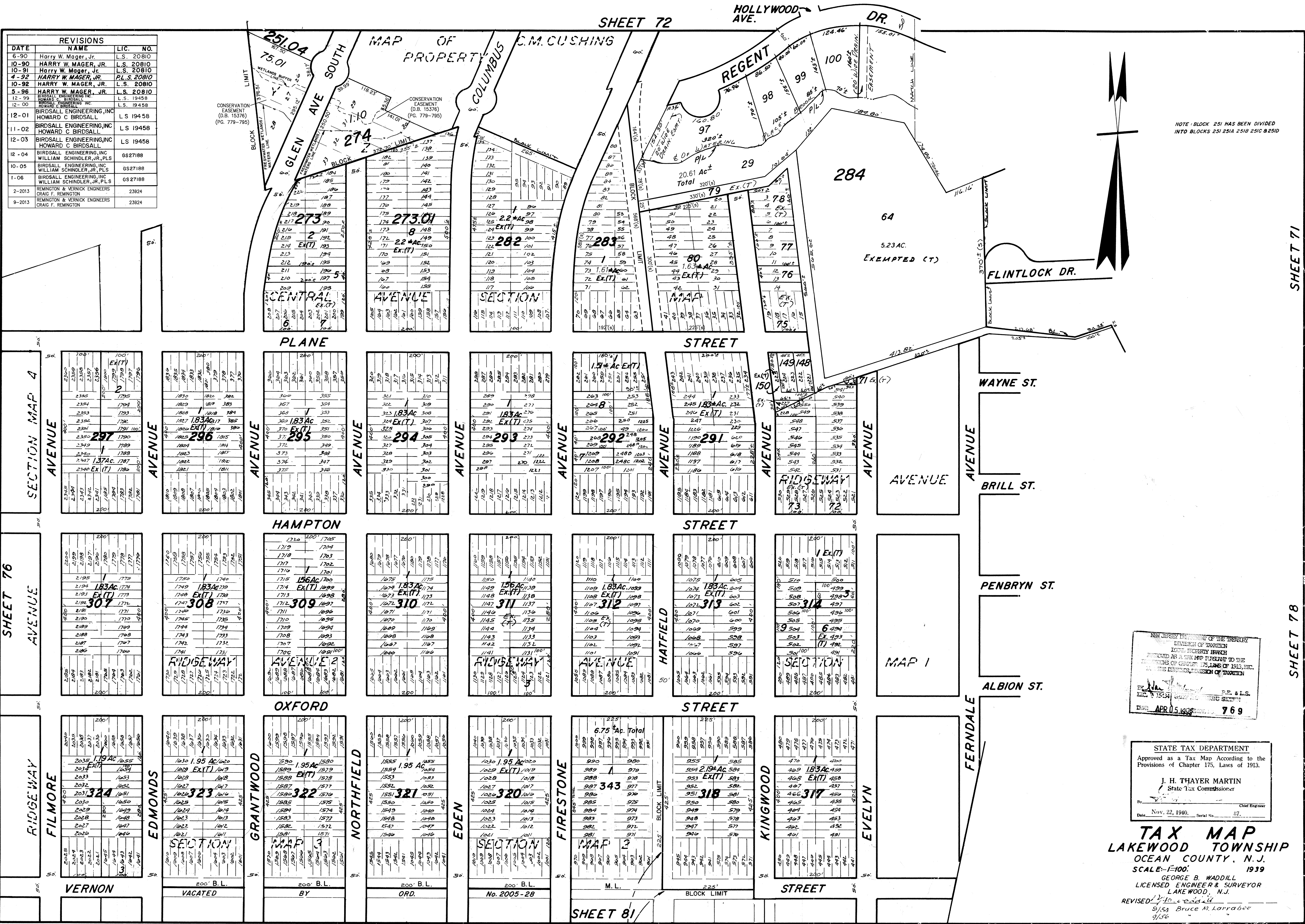


REVISIONS			
DATE	NAME	LIC.	NO.
6-90	Harry W. Mager, Jr.	L.S.	20810
10-90	HARRY W. MAGER, JR.	L.S.	20810
10-91	HARRY W. MAGER, JR.	L.S.	20810
4-92	HARRY W. MAGER, JR.	L.S.	20810
10-92	HARRY W. MAGER, JR.	L.S.	20810
5-96	HARRY W. MAGER, JR.	L.S.	20810
12-99	BIRDSALL ENGINEERING, INC.	L.S.	19458
12-00	BIRDSALL ENGINEERING, INC.	L.S.	19458
12-01	BIRDSALL ENGINEERING, INC.	L.S.	19458
11-02	BIRDSALL ENGINEERING, INC.	L.S.	19458
12-03	BIRDSALL ENGINEERING, INC.	L.S.	19458
12-04	BIRDSALL ENGINEERING, INC.	GS27188	
10-05	BIRDSALL ENGINEERING, INC.	GS27188	
1-06	BIRDSALL ENGINEERING, INC.	GS27188	
2-2013	REMINGTON & VERNICK ENGINEERS	23924	
9-2013	REMINGTON & VERNICK ENGINEERS	23924	



NEW JERSEY DEPARTMENT OF THE TREASURY
DIVISION OF TAXATION
LOCAL PROPERTY TAX
APPROVED AS A TAX MAP PURSUANT TO THE
PROVISIONS OF CHAPTER 175, LAWS OF 1913, ETC.
IN THE OFFICE OF THE DIVISION OF TAXATION
P.E. & L.S.
MAG 5 15541
APR 05 1995 769

STATE TAX DEPARTMENT
Approved as a Tax Map According to the
Provisions of Chapter 175, Laws of 1913.
J. H. THAYER MARTIN
State Tax Commissioner
By: _____ Chief Engineer
Date: Nov. 22, 1940. Serial No. 37.

TAX MAP
LAKEWOOD TOWNSHIP
OCEAN COUNTY, N.J.
SCALE: 1"=100'
1939
GEORGE B. WADDILL
LICENSED ENGINEER & SURVEYOR
LAKEWOOD, N.J.
REVISED 7/10/00
9/56 Bruce M. Larrabee

6-1-84 Rev. for Revaluation
6-85 Update
11-88 Update - HARRY W. MAGER, JR. L.S.
10-92 Rev. For Equalization - HARRY W. MAGER, JR. L.S.
11-85 Update - HARRY W. MAGER, JR. L.S. 20810

12/67 Robert B. Powers
6/73 Daniel A. DeSessa
7/74
8/80

VACATED ORD. # 2000-45 7/20/00

SHEET 81