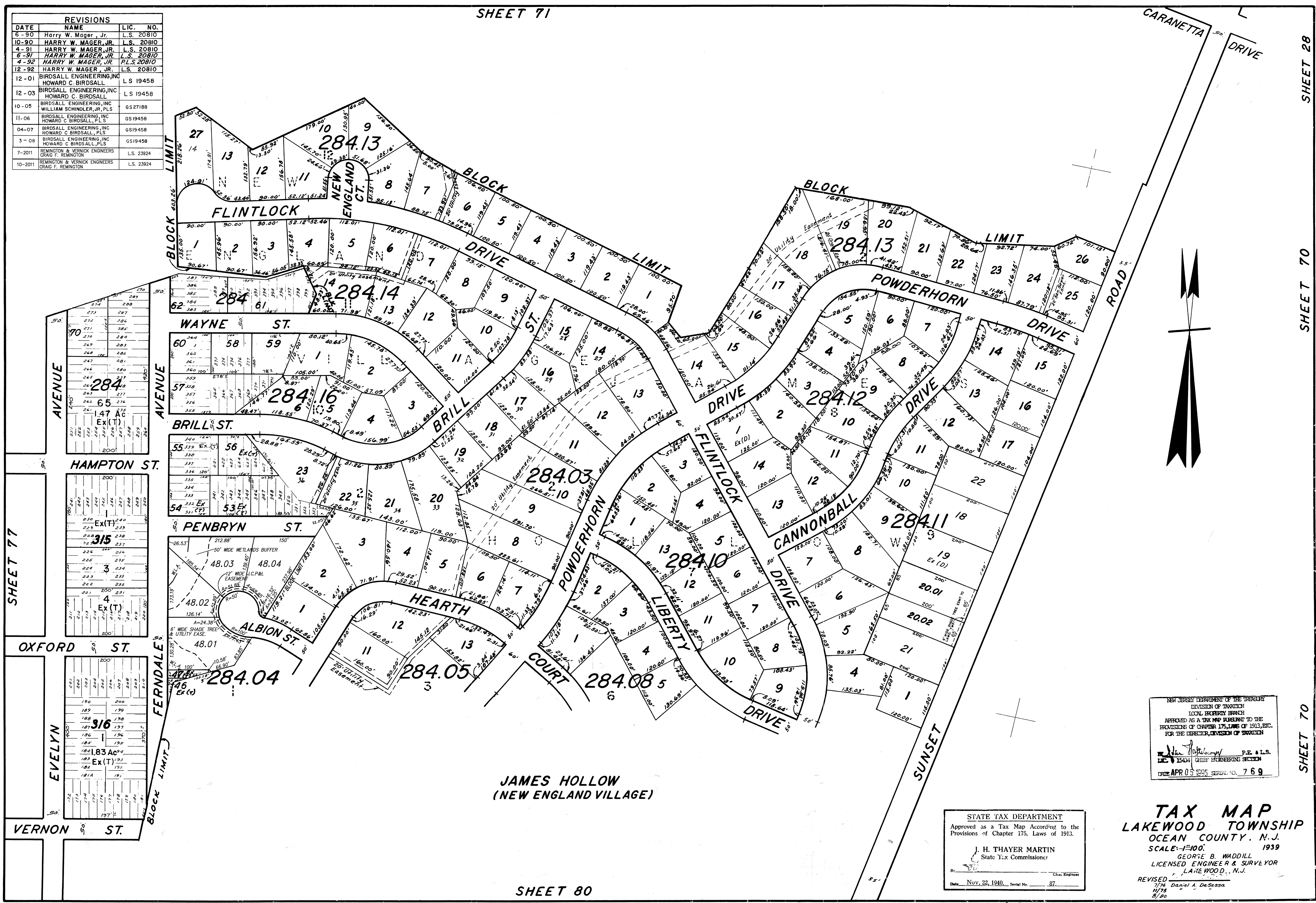


REVISIONS			
DATE	NAME	LIC.	NO.
6-90	Harry W. Mager, Jr.	L.S.	20810
10-90	HARRY W. MAGER, JR.	L.S.	20810
4-91	HARRY W. MAGER, JR.	L.S.	20810
6-91	HARRY W. MAGER, JR.	L.S.	20810
4-92	HARRY W. MAGER, JR.	L.S.	20810
12-92	HARRY W. MAGER, JR.	L.S.	20810
12-01	BIRDSALL ENGINEERING, INC. HOWARD C. BIRDSALL	L.S.	19458
12-03	BIRDSALL ENGINEERING, INC. HOWARD C. BIRDSALL	L.S.	19458
10-05	BIRDSALL ENGINEERING, INC. WILLIAM SCHINDLER, JR., PLS	GS	27188
11-06	BIRDSALL ENGINEERING, INC. HOWARD C. BIRDSALL, PLS	GS	19458
04-07	BIRDSALL ENGINEERING, INC. HOWARD C. BIRDSALL, PLS	GS	19458
3-08	BIRDSALL ENGINEERING, INC. HOWARD C. BIRDSALL, PLS	GS	19458
7-2011	REMINGTON & VERNICK ENGINEERS CRAIG F. REMINGTON	L.S.	23924
10-2011	REMINGTON & VERNICK ENGINEERS CRAIG F. REMINGTON	L.S.	23924



JAMES HOLLOW
(NEW ENGLAND VILLAGE)

NEW JERSEY DEPARTMENT OF THE TREASURY
DIVISION OF TAXATION
LOCAL PROPERTY TAX MAP
APPROVED AS A TAX MAP PURSUANT TO THE
PROVISIONS OF CHAPTER 175, LAWS OF 1913, ETC.
FOR THE DIRECTOR, DIVISION OF TAXATION
[Signature] P.E. & L.S.
15434 CHIEF ENGINEERING SECTION
DATE APR 05 1995 SERIAL NO. 769

STATE TAX DEPARTMENT
Approved as a Tax Map According to the
Provisions of Chapter 175, Laws of 1913.
J. H. THAYER MARTIN
State Tax Commissioner
By: *[Signature]* Chief Engineer
Date: Nov. 22, 1940, Serial No. 87.

TAX MAP
LAKEWOOD TOWNSHIP
OCEAN COUNTY, N.J.
SCALE: 1"=100' 1939
GEORGE B. WADDILL
LICENSED ENGINEER & SURVEYOR
LAKEWOOD, N.J.
REVISED
7/74 Daniel A. DeSessa
1/75
8/80

6-1-84 Rev. for Revaluation
B.B. UPDATE - HARRY W. MAGER, JR., L.S.
ACTION - HARRY W. MAGER, JR., L.S.
MAGER, JR., L.S. 20810