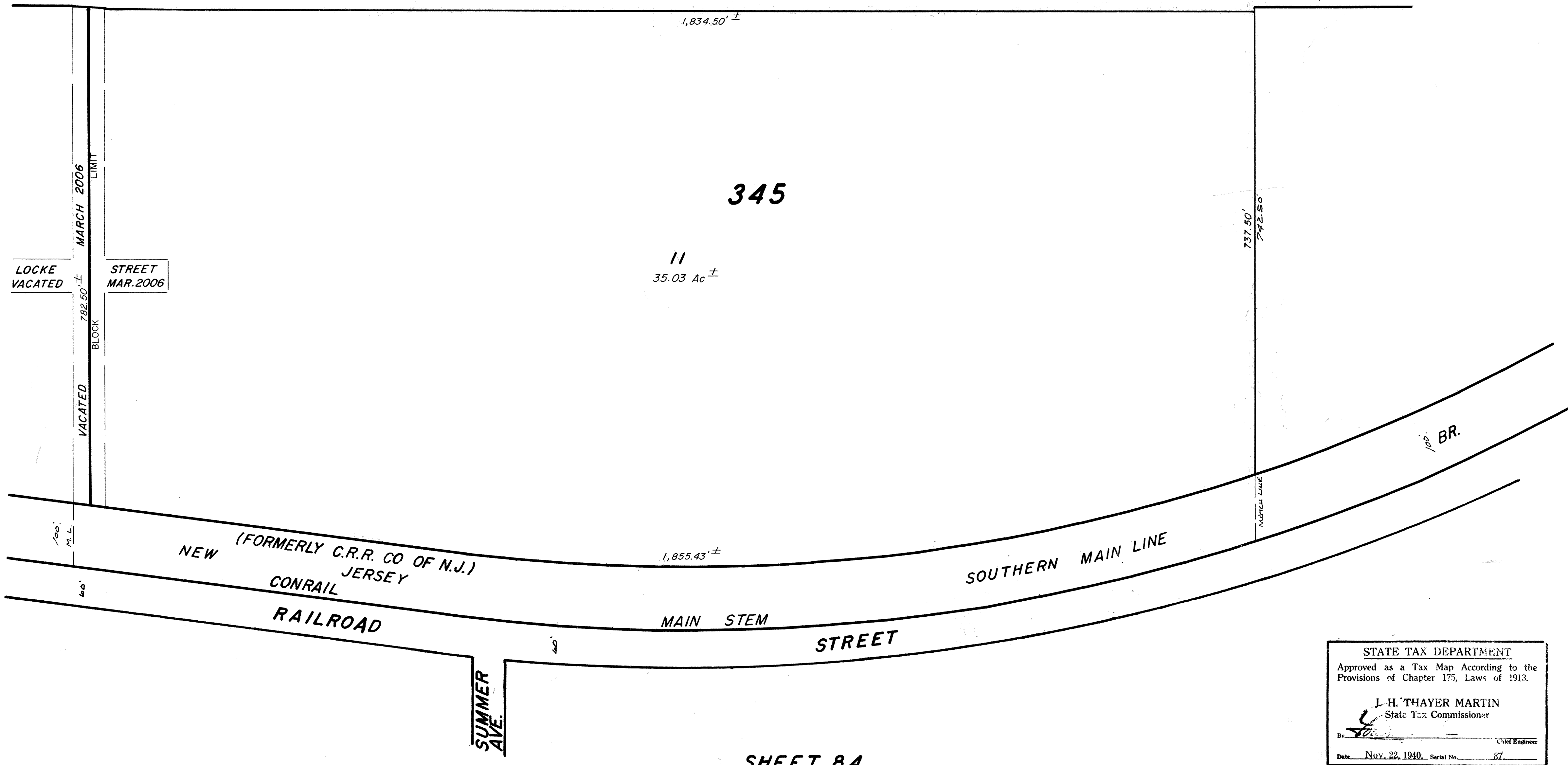
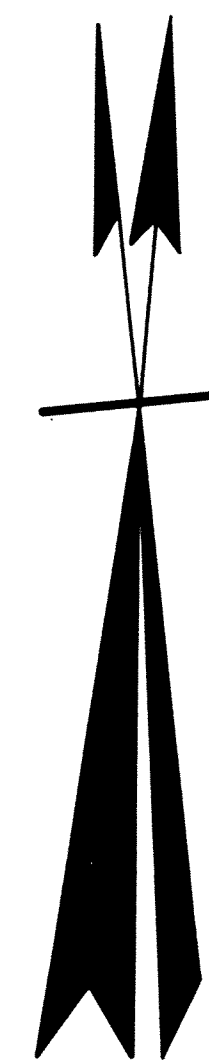
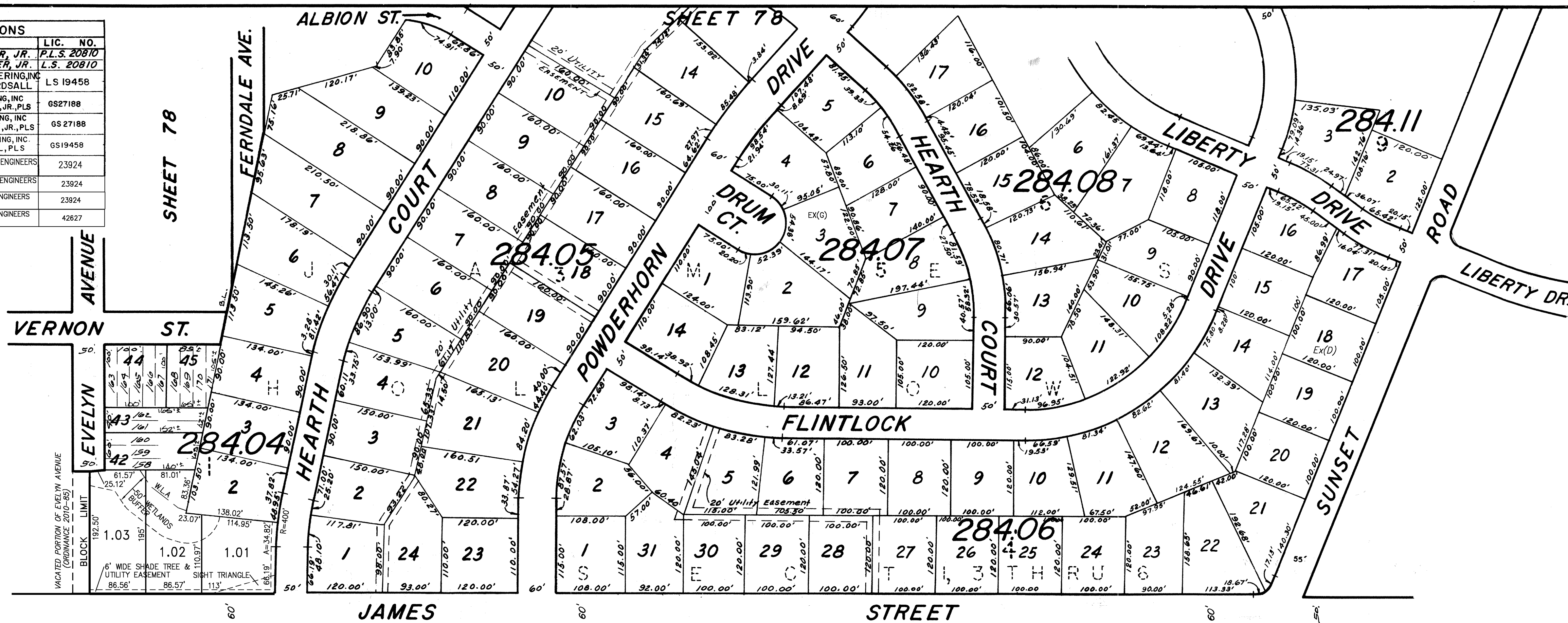


REVISIONS		
DATE	NAME	LIC. NO.
4-92	HARRY W. MAGER, JR.	P.L.S. 20870
12-92	HARRY W. MAGER, JR.	L.S. 20810
6-03	BIRDSALL ENGINEERING, INC. HOWARD C. BIRDSALL	LS 19458
12-04	BIRDSALL ENGINEERING, INC. WILLIAM SCHINDLER, JR., PLS	GS27188
4-05	BIRDSALL ENGINEERING, INC. WILLIAM SCHINDLER, JR., PLS	GS 27188
4-06	BIRDSALL ENGINEERING, INC. HOWARD C. BIRDSALL, PLS	GS19458
4-2010	REMINGTON & VERNICK ENGINEERS CRAIG F. REMINGTON	23924
4-2011	REMINGTON & VERNICK ENGINEERS CRAIG F. REMINGTON	23924
8-2012	REMINGTON & VERNICK ENGINEERS CRAIG F. REMINGTON	23924
5-2014	REMINGTON & VERNICK ENGINEERS CHARLES E. ADAMSON	42627



SHEET 81

SHEET 79

SHEET 84

NEW JERSEY DEPARTMENT OF THE TREASURY
DIVISION OF TAXATION
LOCAL PROPERTY TAX
APPROVED AS A TAX MAP PURSUANT TO THE
PROVISIONS OF CHAPTER 175, LAWS OF 1913.
FOR THE DIVISION OF TAXATION
BY: [Signature]
DATE: APR 05 1995 SERIAL NO. 769

STATE TAX DEPARTMENT
Approved as a Tax Map According to the
Provisions of Chapter 175, Laws of 1913.
J. H. THAYER MARTIN
State Tax Commissioner
By: [Signature]
Date: Nov. 22, 1940. Serial No. 87

TAX MAP
LAKEWOOD TOWNSHIP
OCEAN COUNTY, N. J.
SCALE: 1"=100' 1939
GEORGE B. WADDILL
LICENSED ENGINEER & SURVEYOR
LAKEWOOD, N.J.
REVISED 05/1995