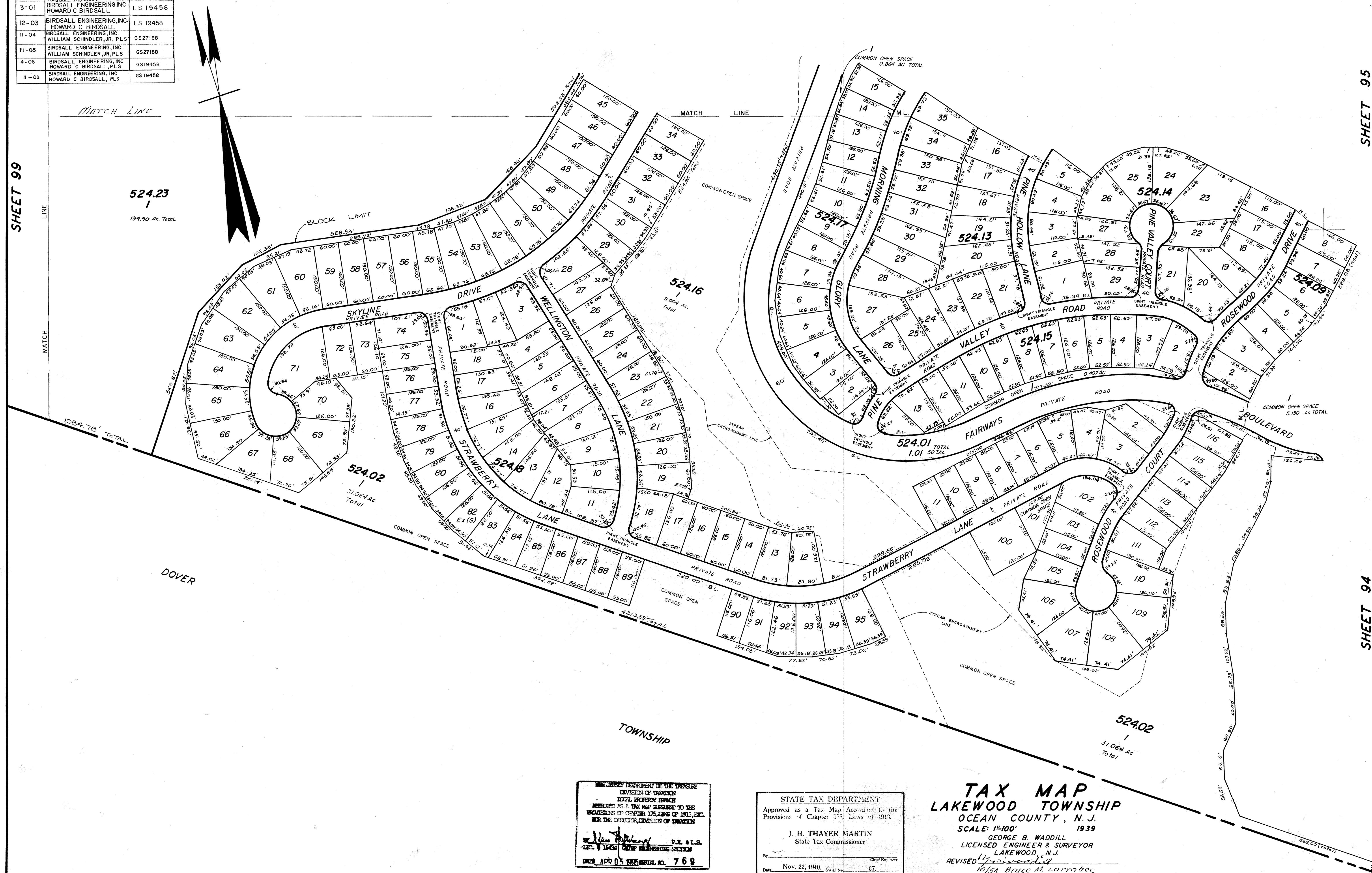


REVISIONS			
DATE	NAME	LIC.	NO.
4-92	HARRY W. MAGER, JR.	PLS	20810
12-97	HARRY W. MAGER, JR.	L.S.	20810
10-99	BIRDSALL ENGINEERING, INC.	L.S.	19458
12-00	BIRDSALL ENGINEERING, INC.	L.S.	19458
3-01	BIRDSALL ENGINEERING, INC.	L.S.	19458
12-03	BIRDSALL ENGINEERING, INC.	L.S.	19458
11-04	BIRDSALL ENGINEERING, INC.	GS	27188
11-05	BIRDSALL ENGINEERING, INC.	GS	27188
4-06	BIRDSALL ENGINEERING, INC.	GS	19458
3-08	BIRDSALL ENGINEERING, INC.	GS	19458



NEW JERSEY DEPARTMENT OF TREASURY
DIVISION OF TAXATION
LOCAL PROPERTY TAXES
APPROVED AS A TAX MAP ACCORDING TO THE
PROVISIONS OF CHAPTER 175, LAWS OF 1913, ETC.
BY THE DIRECTOR, DIVISION OF TAXATION
[Signature] P.E. & L.S.
DATE: APR 01 1940
769

STATE TAX DEPARTMENT
Approved as a Tax Map According to the
Provisions of Chapter 175, Laws of 1913.
J. H. THAYER MARTIN
State Tax Commissioner
By: *[Signature]* Chief Engineer
Date: Nov. 22, 1940. Sheet No. 87.

TAX MAP
LAKEWOOD TOWNSHIP
OCEAN COUNTY, N.J.
SCALE: 1"=100'
1939
GEORGE B. WADDILL
LICENSED ENGINEER & SURVEYOR
LAKEWOOD, N.J.
REVISED 12/22/40
10/54 Bruce M. Warrabec
9/56

6-1-84, Rev. for Revaluation
10-20 Rev. for Revaluation - HARRY W. MAGER, JR., L.S.